

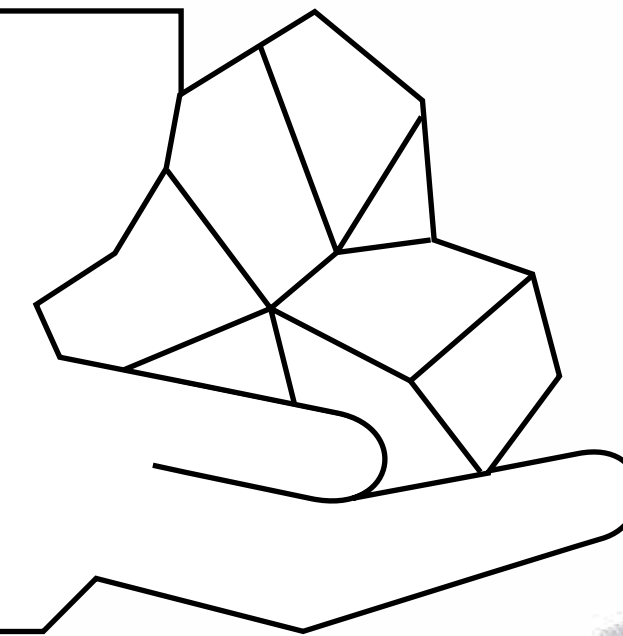
Your #1 service partner from pit to port



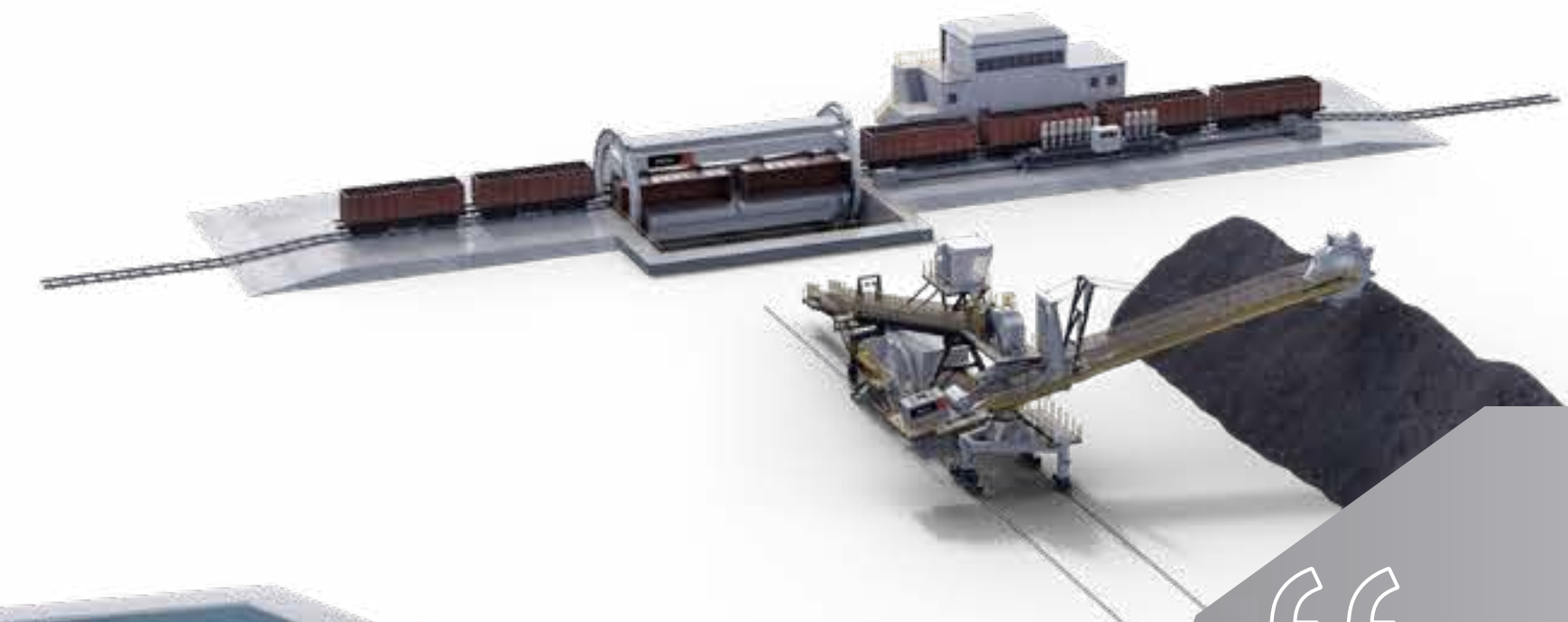
“I want to take the efficiency of our operation to a whole new level”
Archie Warner
Plant Manager

END-TO-END SOLUTIONS

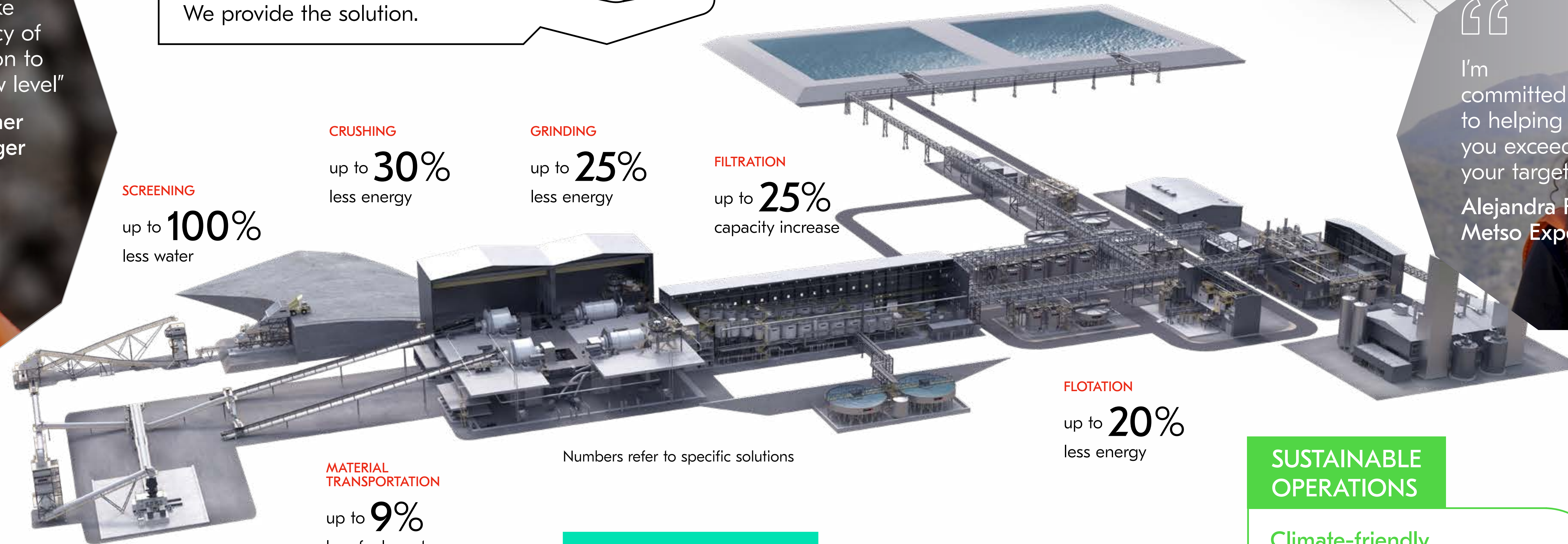
We carry the industry's most comprehensive aftermarket offering, and it's not limited to Metso equipment.
You set the target.
We provide the solution.



SAFETY
Long-lasting and optimized parts and installation methods = fewer and shorter shutdowns



“I'm committed to helping you exceed your targets”
Alejandra Pereda
Metso Expert



SCREENING
up to **100%**
less water

CRUSHING
up to **30%**
less energy

GRINDING
up to **25%**
less energy

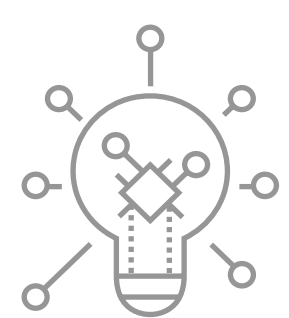
FILTRATION
up to **25%**
capacity increase

MATERIAL TRANSPORTATION
up to **9%**
less fuel per tonne

FLOTATION
up to **20%**
less energy

Numbers refer to specific solutions

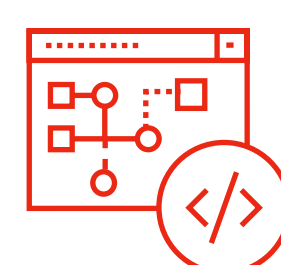
OPTIMIZED PERFORMANCE



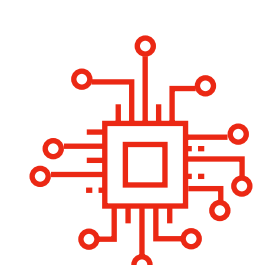
Superior parts, shutdown and process optimization capabilities

- Unmatched know-how of equipment, parts and services
- Unique simulation tools
- Widest offering to choose from
- Pioneering innovations, patented technologies

DIGITAL MINE



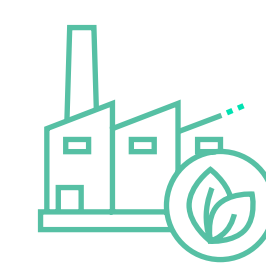
Process & operations optimization



Intelligent equipment

- Intelligent instruments
- Remote monitoring and support
- Parts optimization
- Digital twins

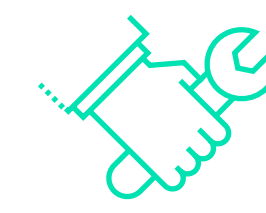
TRUSTED PARTNER



15
own factories and 15+ external



530+
long-term service contracts



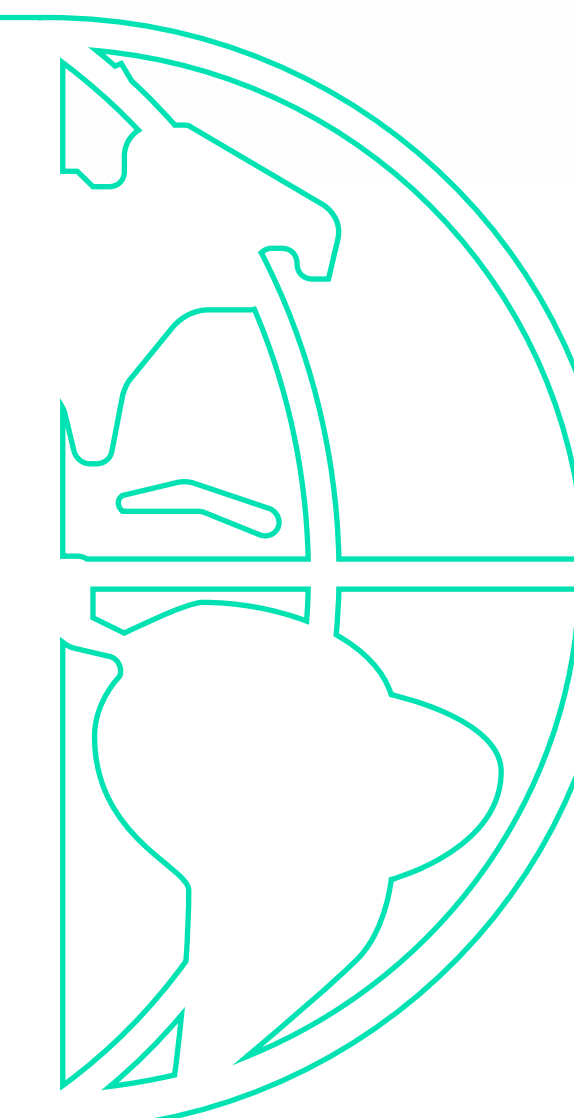
140+
service locations



16,700+
experts



19
distribution centers



- Support, sustainable manufacturing and parts stock close by
- Reliable, high-performing parts and services
- High safety, ethical and environmental standards
- Training and expertise to bridge knowledge gaps

SUSTAINABLE OPERATIONS

Climate-friendly
manufacturing of parts

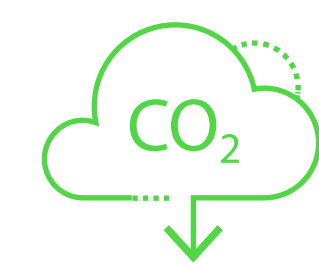
Long-lasting parts
up to 400% longer wear life

Optimization
parts, process and maintenance

Repairs/upgrades
better performance, longer machine life

Recycling
and reuse of worn parts

Safer
with top-notch products, tools and services designed for safety



-73%
CO₂ emissions in our operations achieved (vs 2019)

Net zero
emissions by 2030

- Lower risks and less energy, water, parts, fuel, waste, transportation

