



IC7000 HP Cone Crusher Automation



IC7000

Maximize the Potential of your HP Cone Crusher

It is setting the industry standard for high production of first-class quality end products.

The HP cone is known as a reliable, easy-to-maintain machine and is the backbone of thousands of quarries and mines around the world.

Metso Minerals has industry-leading technology backed with the global aftermarket support organization you can trust.

IC7000, the new generation HP automation system will help you to take your HP cone performance even one step higher.

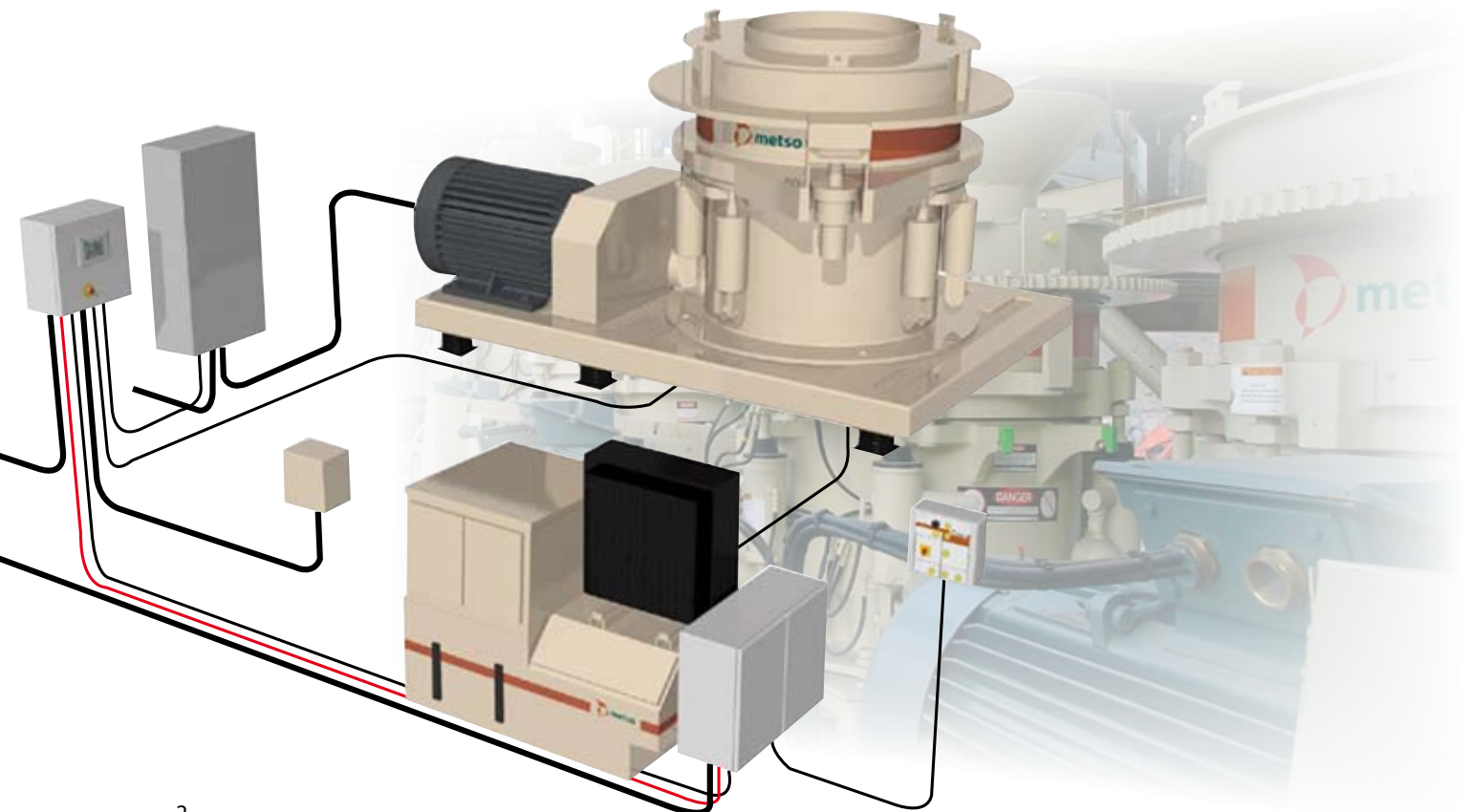
It will ensure optimum operating parameters to make sure that you utilize full potential of your HP cone.

IC7000 monitors cone lubrication (oil flow and temperature) making sure that the crusher is always running under ideal conditions.



IC7000 is designed to be as easy and simple to use as possible. It has a built-in help screen and trouble-shooting options.

IC7000 is a small package with decades of experience built-in it to help you get to the next level.



IC7000

Offers you two levels of automation

IC7000 Basic

IC7000 Basic controls HP crusher lubrication and monitors crusher operation, ensuring that crusher is operating within design limits. It includes an easy user interface with automatic one-button start and stop sequences.

IC7000 Basic make sure your investment is protected with a simple, easy-to-use automation package which ensures that the crusher is operating within the design limits with ideal bearing lubrication.

IC7000 Advanced

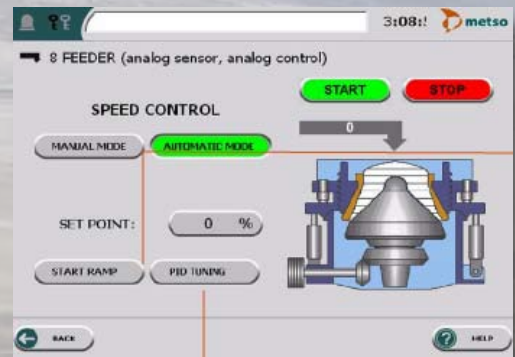
In addition to features included with Basic version, IC7000 Advanced offers your multiple ways to control your crushing process. It has several crusher setting control modes to ensure that the crusher is always operating with the right setting.

IC7000 Advanced includes several different feeder control options to make sure that the HP cone is always ideally choke fed. IC7000 Advanced has collects trend data from key parameters of the crusher for later analysis of performance and utilization. IC7000 is easy to connect to upper plant level automation systems and it can be used as an integrated part of the plant level automation system.



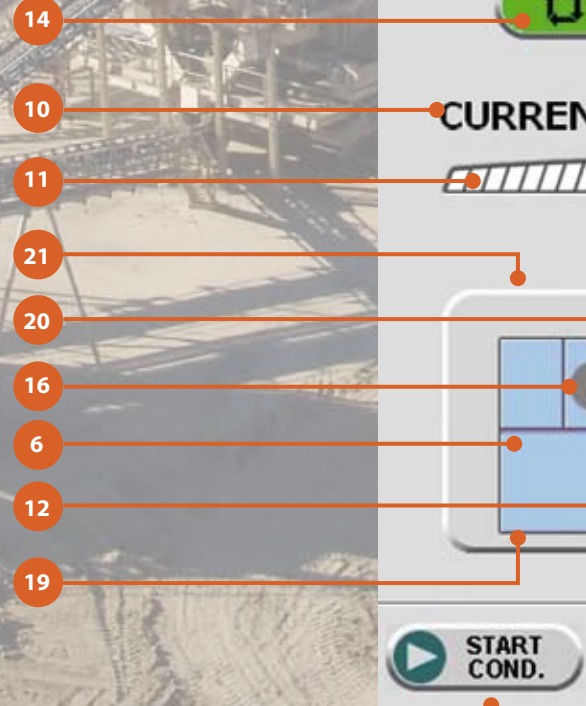
IC7000

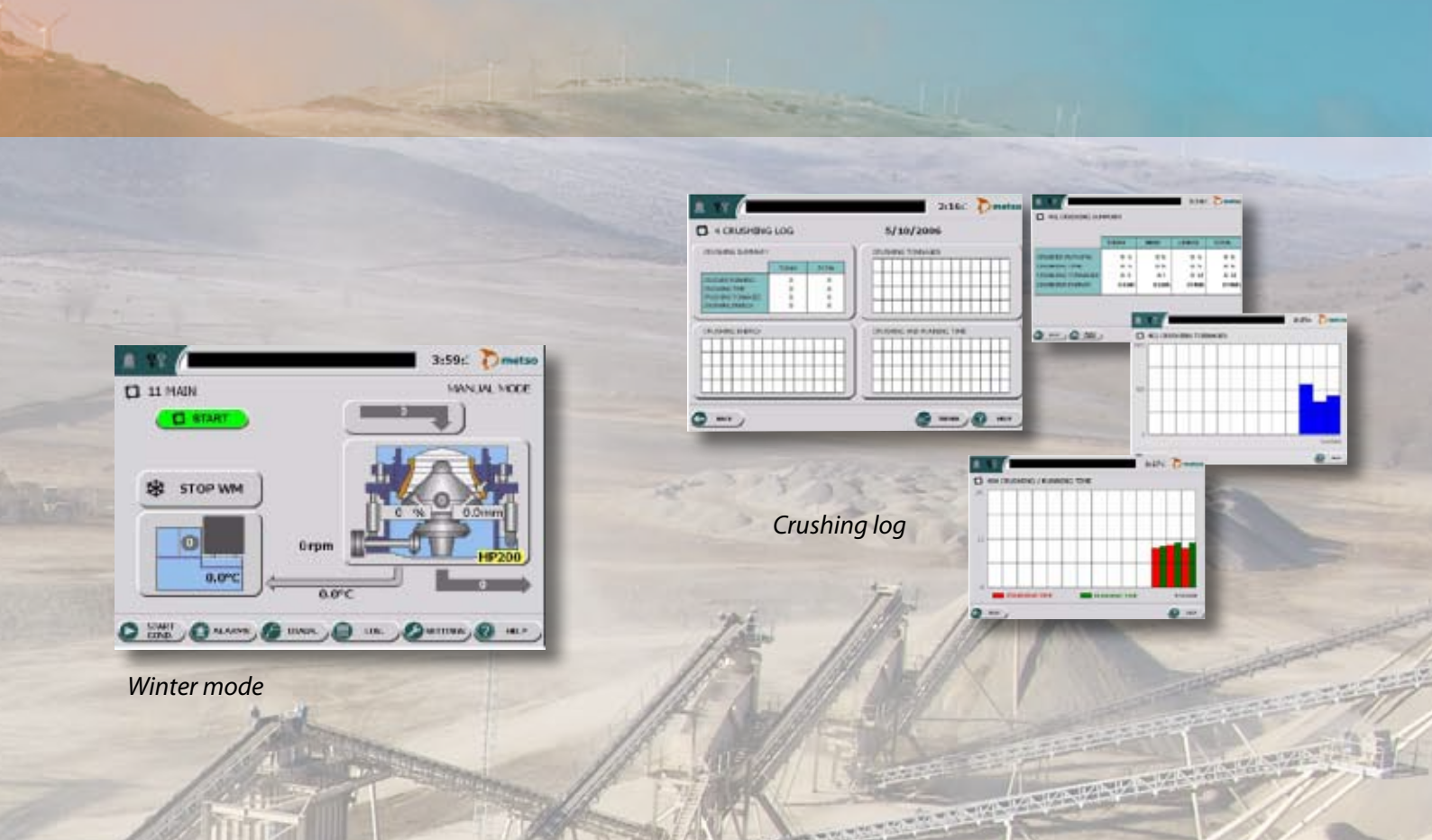
Advanced main window



Feeder regulation

- 1 - Access to the "Starting conditions" menu
- 2 - Key for access to the "Alarms" menu
- 3 - Key for access to the "Diagnostic" menu
- 4 - Key for access to the "Histories" menu
- 5 - Key for access to the "Settings" menu
- 6 - Key for access to the "Help" menu
- 7 - Access to the "Lubrication" menu
- 8 - Access to the "Crusher" menu
- 9 - Access to the "Feeding" menu
- 10 - Crusher current
- 11 - Crusher current bar graph
- 12 - Lubrication tank oil temperature
- 13 - Oil return temperature
- 14 - On/Off button
- 15 - Belt under crusher status
- 16 - Lubrication pump status
- 17 - Crusher status
- 18 - Feed authorization status
- 19 - Immersion heaters in operation display zone
- 20 - Unit heater in operation display zone
- 21 - Selected winter mode display zone
- 22 - Crusher operating mode display
- 23 - Crusher speed
- 24 - Fixed bowl liner/mantle wear percentage
- 25 - Crusher setting
- 26 - Crusher size





3:59 metso

11 MAIN MANUAL MODE

START

STOP WM

0 rpm

0.0°C

0.0mm

HP200

START STOP ALARMS DIAGN. LOG SETTINGS HELP

Winter mode

2:16 metso

4 CRUSHING LOG 5/10/2006

CRUSHING SUMMARY

	TIME	DATA
CRUSHING POWER	0	0
CRUSHING TIME	0	0
CRUSHING CYCLES	0	0
CRUSHING ENERGY	0	0

CRUSHING THROUGH

	DATA
CRUSHING THROUGH	0
CRUSHING THROUGH	0
CRUSHING THROUGH	0
CRUSHING THROUGH	0
CRUSHING THROUGH	0
CRUSHING THROUGH	0
CRUSHING THROUGH	0
CRUSHING THROUGH	0
CRUSHING THROUGH	0

CRUSHING ENERGY

	DATA
CRUSHING ENERGY	0
CRUSHING ENERGY	0
CRUSHING ENERGY	0
CRUSHING ENERGY	0
CRUSHING ENERGY	0
CRUSHING ENERGY	0
CRUSHING ENERGY	0
CRUSHING ENERGY	0
CRUSHING ENERGY	0

CRUSHING THROUGH TIME

	DATA
CRUSHING THROUGH TIME	0
CRUSHING THROUGH TIME	0
CRUSHING THROUGH TIME	0
CRUSHING THROUGH TIME	0
CRUSHING THROUGH TIME	0
CRUSHING THROUGH TIME	0
CRUSHING THROUGH TIME	0
CRUSHING THROUGH TIME	0
CRUSHING THROUGH TIME	0

Crushing log

3:48 metso

MANUAL MODE

START

0 A

0 rpm

0.0°C

0.0 mm

HP 100

ALARMS DIAGN. LOG SETTINGS HELP

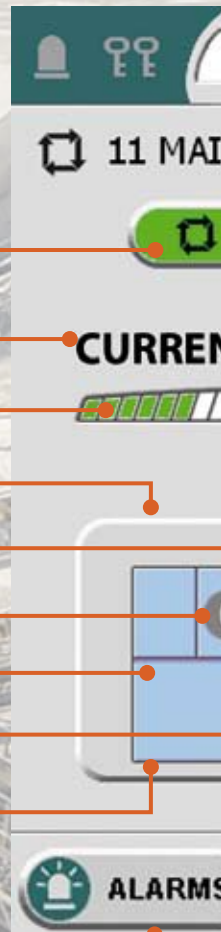
- 2
- 3
- 4
- 5
- 6

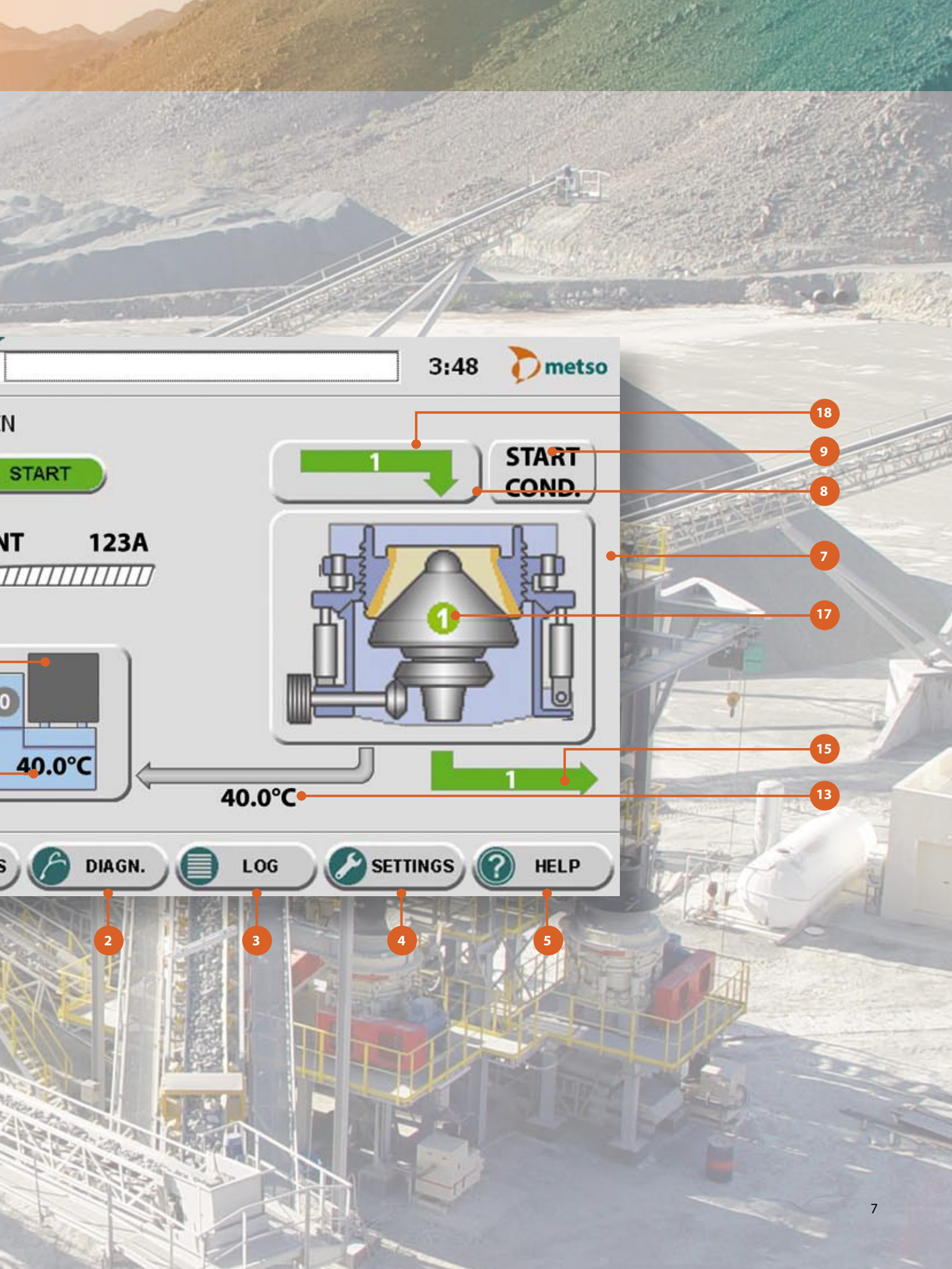
- 18
- 22
- 9
- 8
- 7
- 23
- 17
- 25
- 24
- 26
- 15
- 13

IC7000

Basic plc main window

- 1 - Key to access "Alarms" menu
- 2 - Key to access "Diagnosis" menu
- 3 - Key to access "History" menu
- 4 - Key to access "Settings" menu
- 5 - Key to access "Help" menu
- 6 - Access to the "Lubrication" menu
- 7 - Access to the "Crusher" menu
- 8 - Access to the "Feed" menu
- 9 - Access to the "Start-up conditions" menu
- 10 - Crusher current
- 11 - Crusher current bar graph
- 12 - Lubrication tank oil temperature
- 13 - Oil return temperature
- 14 - Start/stop button
- 15 - Belt under crusher status
- 16 - Lubrication pump status
- 17 - Crusher status
- 18 - Feed authorization status
- 19 - Display area for immersion heaters in operation
- 20 - Display area for air fan cooler in operation
- 21 - Display area for winter mode selected





3:48 metso

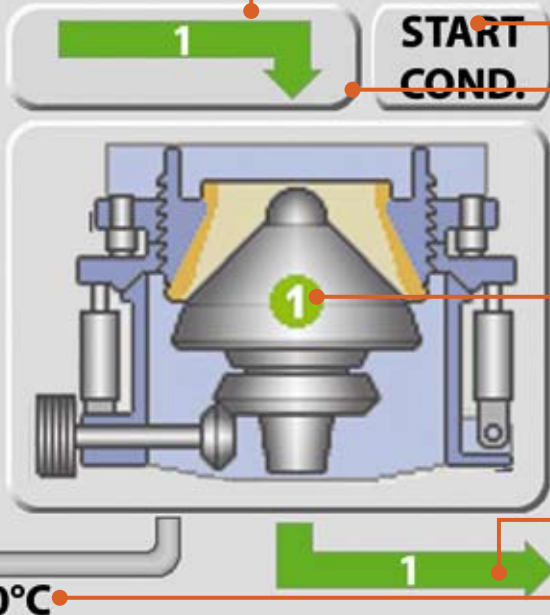
START

123A

40.0°C

40.0°C

DIAGN. LOG SETTINGS HELP



- 18
- 9
- 8
- 7
- 17
- 15
- 13

2

3

4

5

Metso Minerals Crushing Equipment

Our ranges: Unit Crushers

C Series jaw crushers
Primary gyratory crushers
GP Series cone crushers
HP Series cone crushers
MP Series cone crushers
NP Series horizontal impact crushers
Barmac Series vertical impact crushers
Lindemann Series metal crushers
Nordberg Laboratory crushers
Nordberg AC Series air classifiers

Mobile Equipment

LT Series mobile crushing plants
NW Series portable plants

Complete Plants

Complete plants for aggregate production
Complete plants for recycling

Metso Minerals Construction

Lokomonkatu 3, P.O. Box 306
33101 Tampere
Finland
Phone: +358 204 84 142
Fax: +358 204 84 143
e-mail: minerals.info.csr@metso.com
www.metsominerals.com

Australia and New Zealand

Metso Minerals (Australia) Ltd
24 Lavarack Ave
Eagle Farm, QLD 4009 West Perth, WA 6005
Australia
Phone: +61 7 3868 2144
Fax: +61 7 3868 2105

China

Metso Minerals (Beijing) Ltd
19/F, The Exchange Beijing, Tower 4,
China Merchants Centre,
No. 118 Jian Guo Lu Yi Chaoyang District
100022 Beijing,
China
Phone: +86 10 6566 6600
Fax: +86 10 6566 2583

India and Asia-Pacific

Metso Minerals (India) Pvt Ltd
1st Floor, DLF Building No. 10,
Tower A, DLF Cybercity,
DLF Phase II, Gurgaon 122002
India
Phone: +91 124 235 1541
Fax: +91 124 235 1601

Europe, Middle East and Africa

Metso Minerals España, S.A.
C/ Rivas Nº 4
28032 Madrid
Spain
Phone: +34 91 825 5700
Fax: +34 91 825 5740

North and Central America

Metso Minerals Industries Inc.
20965 Crossroads Circle
Waukesha, WI 53186
U.S.A.
Phone: +1 262 717 2500
Fax: +1 262 717 2504

Russia and other CIS countries

ZAO Metso Minerals (CIS)
V.O. Liniya, 70
199178 St. Petersburg
Russia
Phone: +7 812 740 3040
Fax: +7 812 740 5775

South America

Metso Minerals Indústria e Comércio Ltda
Avenida Independência, 2500 - Éden
18087-050 Sorocaba
Brazil
Phone: +55 15 2102 1300
Fax: +55 15 2102 1696

