

Crusher automation
Nordberg IC5000 GP cone crusher
automation





The high power levels made possible by the robust design of GP cone crushers translate into high productivity.



The Nordberg IC5000 automation system offers a variety of control modes for various production requirements.

Nordberg IC5000 - maximizing the potential of your GP cone crusher

It is setting the industry standard for high production of first-class quality end products. The GP cone is known as a reliable, easy-to-maintain machine and is the backbone of thousands of quarries and mines around the world.

Metso has industry leading technology backed with the global aftermarket support organization you can trust.

IC5000, the new generation GP automation system will help you to take your GP cone performance even one step higher.

It will ensure optimum operating parameters to make sure that you utilize full potential of your GP cone.

IC5000 monitors cone lubrication unit making sure that the crusher is always running under ideal conditions.

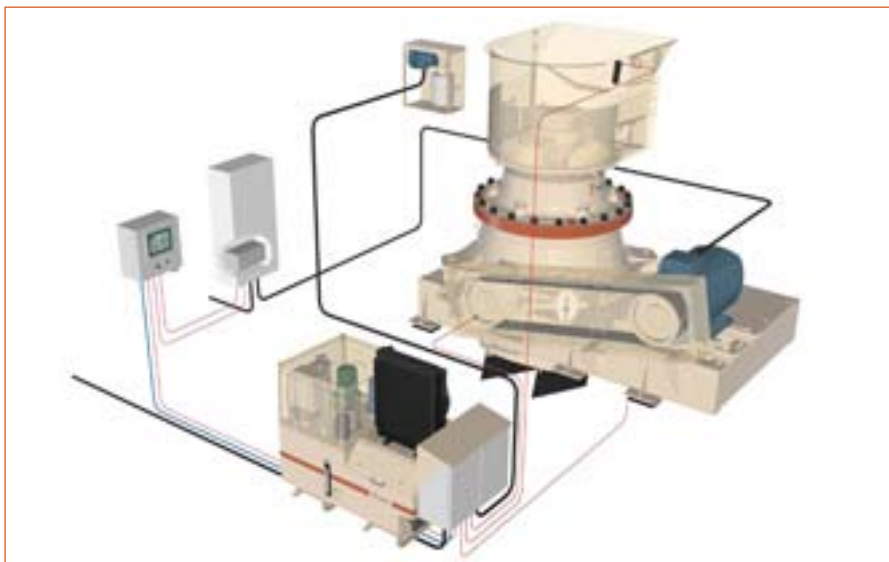
IC5000 is designed to be as easy and simple to use as possible. It has a built-in help screen and trouble-shooting options.

IC5000 is a small package with decades of experience built-in it to help you get to the next level.

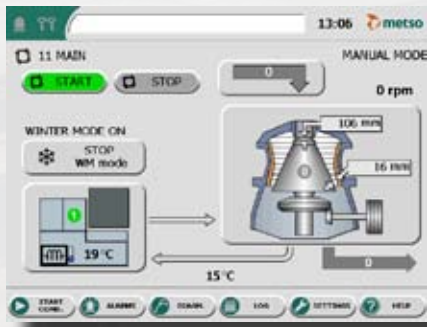
In addition to included fundamental features, IC5000 offers your multiple ways to control your crushing process. It has several crusher setting control modes to ensure that the crusher is always operating with the right setting.

IC5000 includes several different feeder control options to make sure that the GP cone is always ideally choke fed. Different drive modes enable running the crusher as desired way : Setting mode keeps constant setting during crushing and load mode, keeps the power and/or the pressure levels in target area. IC5000 collects trend data from key parameters of the crusher for later analysis performance and utilization. IC5000 is easy to connect to upper plant level automation systems and it can be used as an integrated part of the plant level automation system.

IC5000 operation features include lubrication control, crusher load monitoring and internal interlockings.



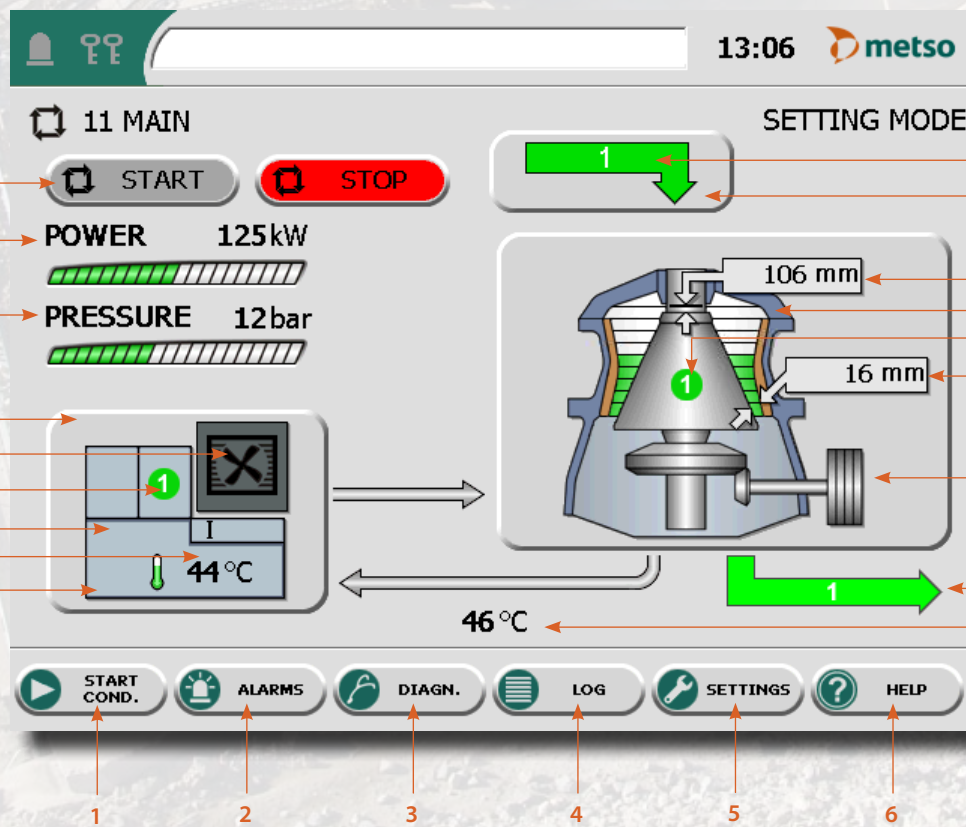
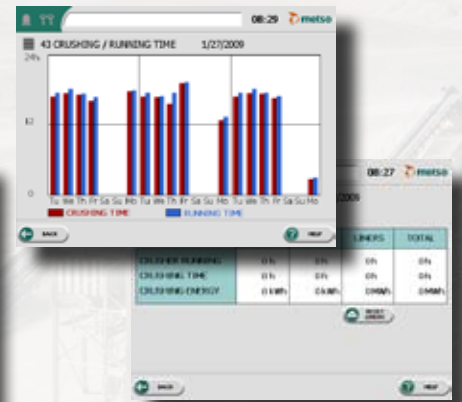
A complete Nordberg GP cone crusher set up with IC5000 automation unit



Winter mode



Crushing log



- 1 - Access to the «Starting conditions» menu
- 2 - Key for access to the «Alarms» menu
- 3 - Key for access to the «Diagnostic» menu
- 4 - Key for access to the «Histories» menu
- 5 - Key for access to the «Settings» menu
- 6 - Key for access to the «Help» menu
- 7 - Access to the «Lubrication» menu
- 8 - Access to the «Crusher» menu
- 9 - Access to the «Feeding» menu
- 10 - Crusher power and power graph
- 11 - Crusher adjusting pressure and graph
- 12 - Lubrication tank oil temperature
- 13 - Oil return temperature
- 14 - Process start and stop
- 15 - Discharge conveyor running status
- 16 - Lubrication pump status
- 17 - Crusher status
- 18 - Feed authorization status
- 19 - Immersion heaters in operation display zone
- 20 - Lubrication oil cooler status
- 21 - Selected winter mode display zone
- 22 - Crusher operating mode display
- 23 - Crusher speed
- 24 - Mainshaft lifting limit
- 25 - Crusher setting

Metso Mining and Construction Technology crushing equipment

Our Nordberg, Barmac and Lokotrack brand ranges:

Unit crushers

- C Series jaw crushers
- Primary gyratory crushers
- GP Series cone crushers
- HP Series cone crushers
- MP Series cone crushers
- NP Series horizontal impact crushers
- B and V-Series vertical shaft impact crushers
- Laboratory crushers

Mobile equipment

- LT Series mobile crushing plants
- NW Series portable plants

Complete plants

- Complete plants for aggregate production
- Complete plants for recycling

Metso's Construction business line main contacts

Australia and New Zealand

Metso Minerals (Australia) Ltd
1110 Hay Street
West Perth, WA 6005
Australia
Phone: +61 8 9420 5555
Fax: +61 8 9320 2500

China

Metso Minerals (Beijing) Ltd
19/F, The Exchange Beijing, Tower 4,
China Merchants Centre,
No. 118 Jian Guo Lu Yi Chaoyang District
100022 Beijing,
China
Phone: +86 10 6566 6600
Fax: +86 10 6566 2583

India and Asia-Pacific

Metso Minerals (India) Pvt Ltd
1st Floor, DLF Building No. 10,
Tower A, DLF Cybercity
DLF Phase II,
Gurgaon 122002
India
Phone: +91 124 235 1541
Fax: +91 124 235 1601

Europe, Middle East and Africa

Metso Minerals España, S.A.
C/ Rivas Nº 4
28032 Madrid
Spain
Phone: +34 91 825 5700
Fax: +34 91 825 5740

North and Central America

Metso Minerals Industries Inc.
20965 Crossroads Circle
Waukesha, WI 53186
U.S.A.
Phone: +1 262 717 2500
Fax: +1 262 717 2504

Russia and other CIS countries

ZAO Metso Minerals (CIS)
V.O. Liniya, 70
199178 St. Petersburg
Russia
Phone: +7 812 740 3040
Fax: +7 812 740 5775

South America

Metso Minerals Indústria e Comércio Ltda
Avenida Independência, 2500 - Éden
18087-050 Sorocaba
Brazil
Phone: +55 15 2102 1300
Fax: +55 15 2102 1696

Metso's Mining and Construction Technology

Lokomonkatu 3, P.O. Box 306
33101 Tampere
Finland
Phone: +358 204 84 142
Fax: +358 204 84 143

e-mail: minerals.info.csr@metso.com
www.metso.com/miningandconstruction

