

# Metso

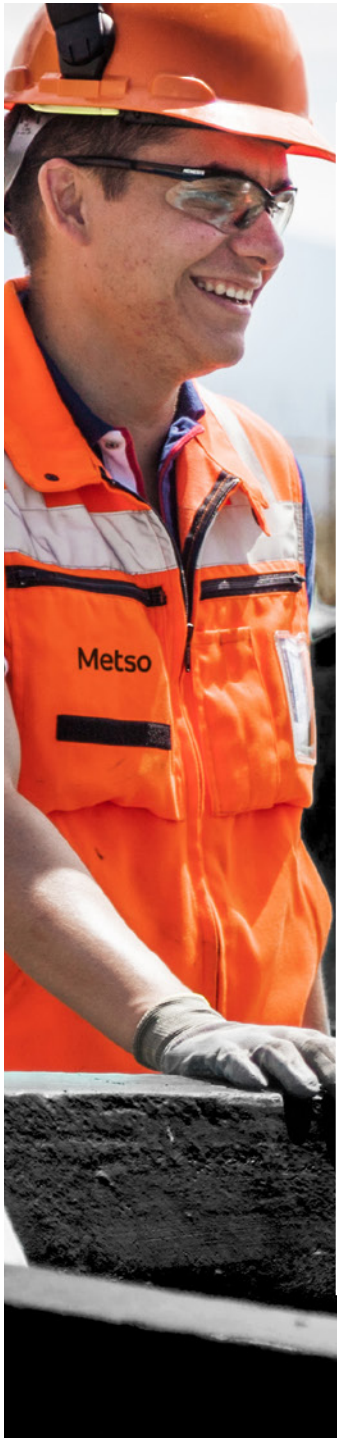
Mining and aggregates crusher wears

## Lifting tools for crusher wear parts



# Contents

|   |          |
|---|----------|
| Introduction  | 03       |
| Tools for Nordberg® C Series™ crusher<br>Jaw and cheek plate lifting tools                                      | 04       |
| Tools for Nordberg® HP Series™ crusher<br>Feed cone lifting tools<br>Mantle lifting tools                       | 05<br>06 |
| Tools for Nordberg® GP Series™ crusher<br>Mantle lifting tools<br>Mantle nut lifting tools                      | 07<br>08 |
| Tools for Nordberg® MP Series™ crusher<br>Mantle and bowl liner lifting tools                                   | 09       |
| Tools for Nordberg® NP Series™ crusher<br>Blow bar lifting tools<br>Breaker plate liner lifting tools           | 10<br>11 |
| Tools for Barmac® B Series™ crusher<br>Rotor lifting plate  | 12       |
| Tools for other or third-party crushers<br>X-Series lifting tools<br>Lifting tools for primary crusher concaves | 13<br>14 |
| Recommended content   | 15       |





# Why Metso lifting tools for crusher wear parts?

Metso's fit-for-purpose lifting tools are designed to make lifting crusher wear parts safe and efficient. We offer a wide range of tools for all of your wear parts' maintenance and handling needs.

## **Efficient maintenance for less downtime**

Metso lifting tools make maintenance and relining faster and more efficient. Each tool is designed for the specific product and task. By using lifting tools, you can avoid welding lugs onto worn out wear parts for removal. It also reduces the associated risks and saves on time. Lifting tools can also be used for new wear parts even if they are equipped with casted lifting lugs.

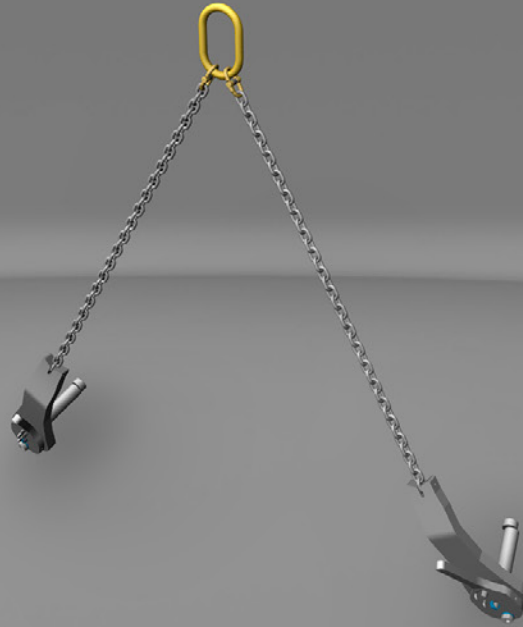
## **Designed by experts**

Metso lifting tools are designed and engineered by experts that have decades of experience in wear parts and crushers. All Metso lifting solutions are designed in collaboration with on-site personnel that have a deep understanding of on-site conditions when changing out wear parts and performing maintenance.

## **OEM with quality guaranteed**

Our lifting tools are designed with Original Equipment Manufacturer (OEM) quality and decades of crusher expertise, ensuring that high standards and tolerances are met. Quality is always inspected to ensure maximum performance and safety.

All Metso tools meet strict global safety standards. They each go through extensive product development and field tests at customer sites. The tools come with detailed instruction manuals and our experts are there to support you when needed.



### Features and benefits:

- Specially designed to remove jaw and cheek plates
- Makes crusher maintenance easier and safer
- Reduced downtime with faster and more efficient changeouts
- Backed by OEM

# Jaw and cheek plate lifting tools

Designed for lifting Nordberg® C Series™ jaw crusher wear parts

| Machine  | Tool                                    | Load limit (kg) | Item code |
|--|---|-----------------|-----------|
| C80, C95, C96, C100, C105, C106, C116, C3054, C3055                              | Cheek plate lifting tool (Single chain) | 500             | MM0209814 |
| C110, C120, C125, C130, C140, C145, C150, C160, C200                             | Cheek plate lifting tool (Single chain) | 1,000           | MM0209800 |
| C80, C95, C96, C100, C105, C106, C125  | Jaw plate lifting tool (Double chain)   | 1,500           | MM0554187 |
| C110, C116, C120, C130, C140, C145, C150 (2-piece), C160 (2-piece), C3054, C3055 | Jaw plate lifting tool (Double chain)   | 2,800           | MM0551477 |
| C130 (1-piece), C150 (1-piece), C200   | Jaw plate lifting tool (Double chain)   | 5,500           | MM1077079 |
| C160 (1-piece), C200   | Jaw plate lifting tool (Double chain)   | 9,000           | MM1397453 |
| C160 (1-piece), C200   | Jaw plate lifting tool (Double chain)   | 9,000           | MM1721325 |





**Features and benefits:**

- Specially designed to remove feed cones
- Makes crusher maintenance easier and safer
- Reduced downtime with faster and more efficient changeouts
- Backed by OEM

# Feed cone lifting tools

Designed for lifting Nordberg® HP Series™ cone crusher wear parts

Machine

Tool

Load limit

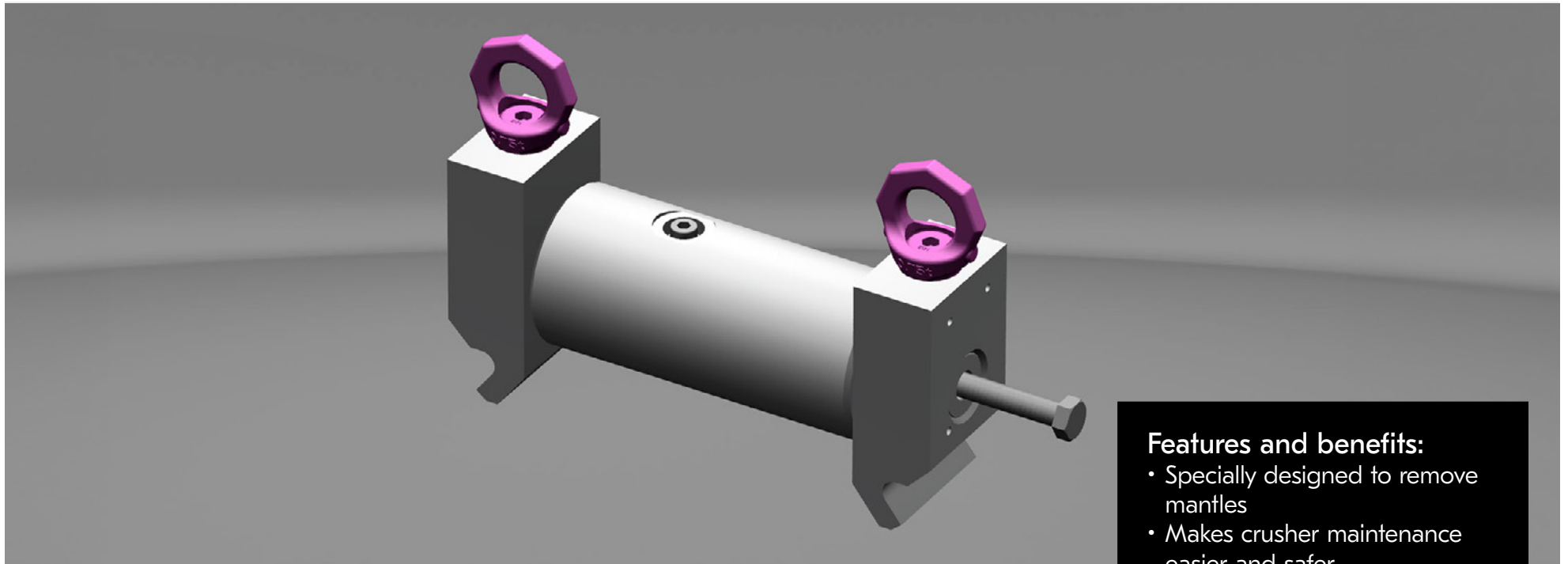
Item code

HP100, HP200, HP200e, HP300, HP305e, HP400, HP500, HP3, HP4, HP5, HP6

Feed cone lifting tool

53 kg

MM1641014



**Features and benefits:**

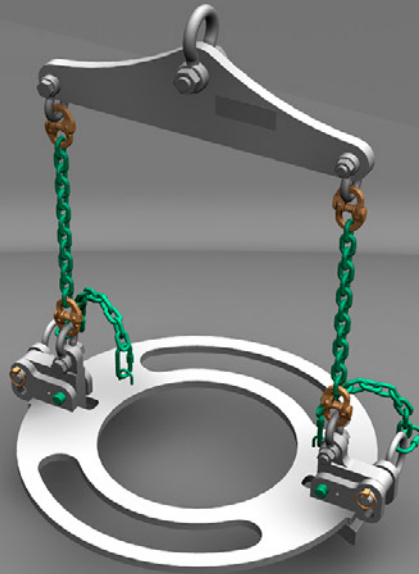
- Specially designed to remove mantles
- Makes crusher maintenance easier and safer
- Reduced downtime with faster and more efficient changeouts
- Backed by OEM

# Mantle lifting tools

Designed for lifting Nordberg® HP Series™ and MX Series™ cone crusher wear parts

| Machine                        | Tool                | Load limit (kg) | Item code     |
|--------------------------------|---------------------|-----------------|---------------|
| HP200, HP300, HP305e, HP3, HP4 | Mantle lifting tool | 1,360           | MM0905130     |
| HP400, HP500, HP5, HP6         | Mantle lifting tool | 2,300           | N90288052-SET |
| MX3                            | Mantle lifting tool | 1,360           | MM0906238     |
| MX4                            | Mantle lifting tool | 1,360           | MM0905130     |





#### Features and benefits:

- Specially designed to remove mantles
- Makes crusher maintenance easier and safer
- Reduced downtime with faster and more efficient changeouts
- Backed by OEM

# Mantle lifting tools

Designed for lifting Nordberg® GP Series™ cone crusher wear parts

| Machine                                  | Tool                    | Load limit (kg) | Item code |
|--|-------------------------|-----------------|-----------|
| GP220                                    | Mantle lifting tool     | 2,500           | MM1134732 |
| GP330                                    | Mantle lifting tool     | 3,500           | MM1134698 |
| GP550 (excluding EF and F-G1015 mantles) | Mantle lifting tool     | 6,500           | MM1134761 |
| GP7                                      | Mantle lifting tool     | 14,500          | MM1172864 |
| GP100, GP100S                            | Mantle nut lifting tool | 35              | MM1176630 |
| GP220, GP200S, GP300S                    | Mantle nut lifting tool | 60              | MM1176657 |
| GP330                                    | Mantle nut lifting tool | 110             | MM1178283 |
| GP550, GP500S                            | Mantle nut lifting tool | 130             | MM1176637 |
| GP7                                      | Mantle nut lifting tool | 250             | MM1231905 |





### Features and benefits:

- Specially designed to remove mantle nuts
- Makes crusher maintenance easier and safer
- Reduced downtime with faster and more efficient changeouts
- Backed by OEM

# Mantle nut lifting tools

Designed for lifting Nordberg® GP Series™ cone crusher wear parts

| Machine | Tool                    | Load limit (kg) | Item code |
|---------|-------------------------|-----------------|-----------|
| GP100   | Mantle nut lifting tool | 35              | MM1176630 |
| GP100S  | Mantle nut lifting tool | 35              | MM1176630 |
| GP220   | Mantle nut lifting tool | 60              | MM1176657 |
| GP200S  | Mantle nut lifting tool | 60              | MM1176657 |
| GP330   | Mantle nut lifting tool | 110             | MM1178283 |
| GP300S  | Mantle nut lifting tool | 60              | MM1176657 |
| GP550   | Mantle nut lifting tool | 130             | MM1176637 |
| GP500S  | Mantle nut lifting tool | 130             | MM1176637 |
| GP7     | Mantle nut lifting tool | 250             | MM1231905 |







### Features and benefits:

- Faster mantle and bowl liner replacement
- Improves maintenance and safety with no need for welding
- Quality inspected to ensure maximum performance

# Mantle and bowl liner lifting tools

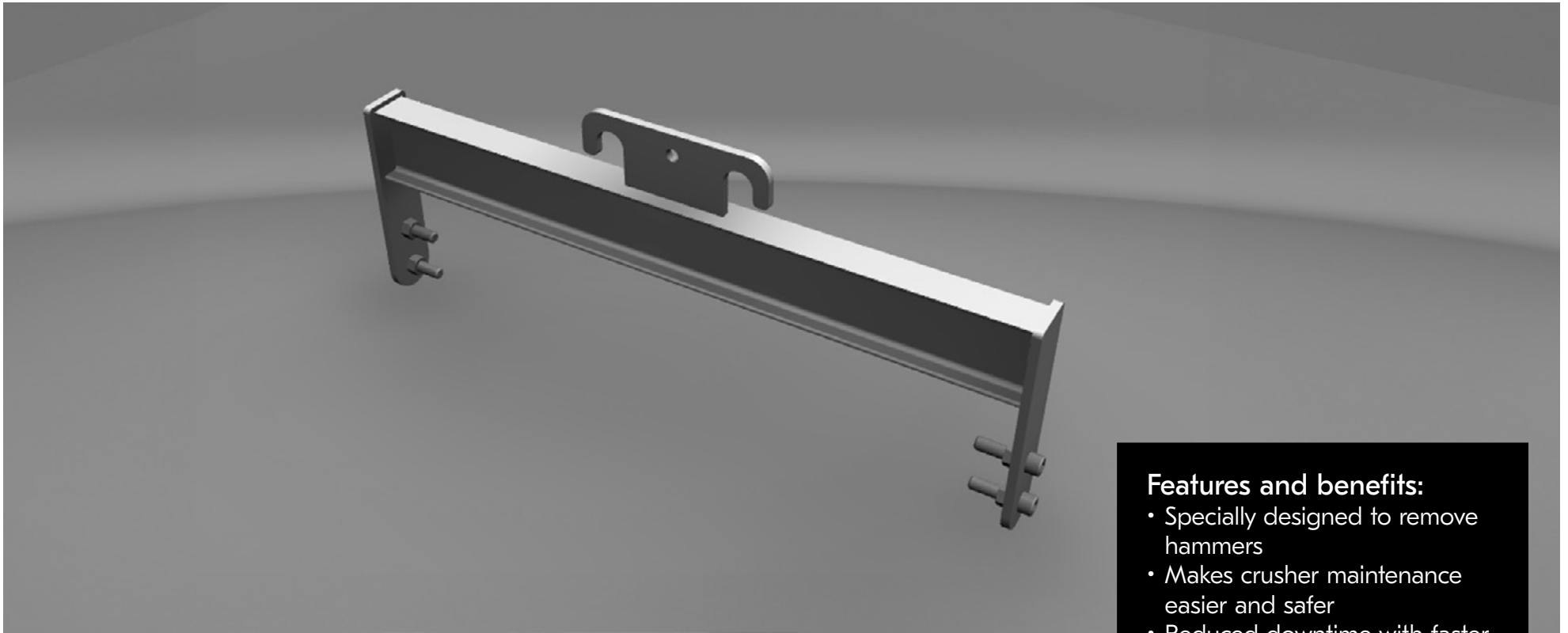
Designed for lifting Nordberg® MP Series™ cone crusher wear parts

| Machine               | Tool                    | Load limit (kg) | Item code |
|-----------------------|-------------------------|-----------------|-----------|
| MP1000, MP1250        | Mantle lifting tool     | 7,500           | MM1540907 |
| MP800                 | Mantle lifting tool     | 6,500           | MM1559545 |
| MP800, MP1000, MP1250 | Bowl liner lifting tool | 7,606           | MM1230950 |

### Australia

|                       |                            |       |           |
|-----------------------|----------------------------|-------|-----------|
| MP1000, MP1250        | AU Mantle lifting tool     | 7,500 | MM1642751 |
| MP800                 | AU Mantle lifting tool     | 6,500 | MM1642755 |
| MP800, MP1000, MP1250 | AU Bowl liner lifting tool | 7,606 | MM1642761 |





#### Features and benefits:

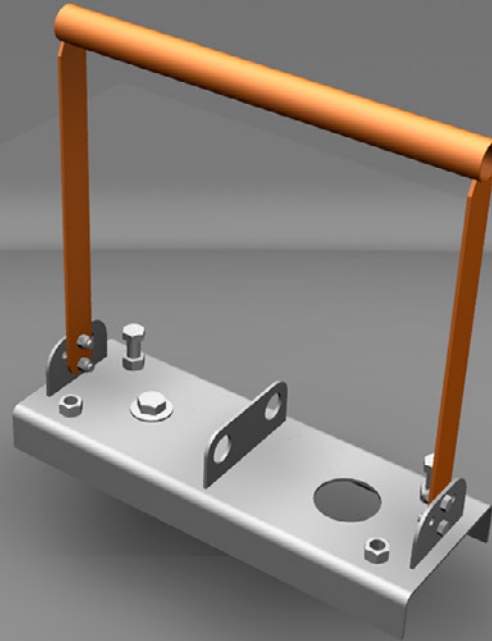
- Specially designed to remove hammers
- Makes crusher maintenance easier and safer
- Reduced downtime with faster and more efficient changeouts
- Backed by OEM

## Blow bar lifting tools

Designed for lifting Nordberg® NP Series™ impact crusher wear parts

| Machine              | Tool                | Load limit (kg) | Item code  |
|----------------------|---------------------|-----------------|------------|
| NP1110, NP1210       | Hammer lifting tool | 250             | 7091116004 |
| NP13, NP1213, NP1313 | Hammer lifting tool | 370             | 7091116002 |
| NP15, NP1315, NP1415 | Hammer lifting tool | 500             | 7091116000 |
| NP20, NP1520, NP1620 | Hammer lifting tool | 800             | 7091116003 |





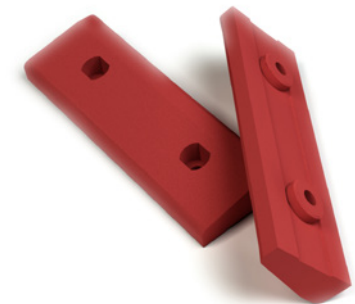
**Features and benefits:**

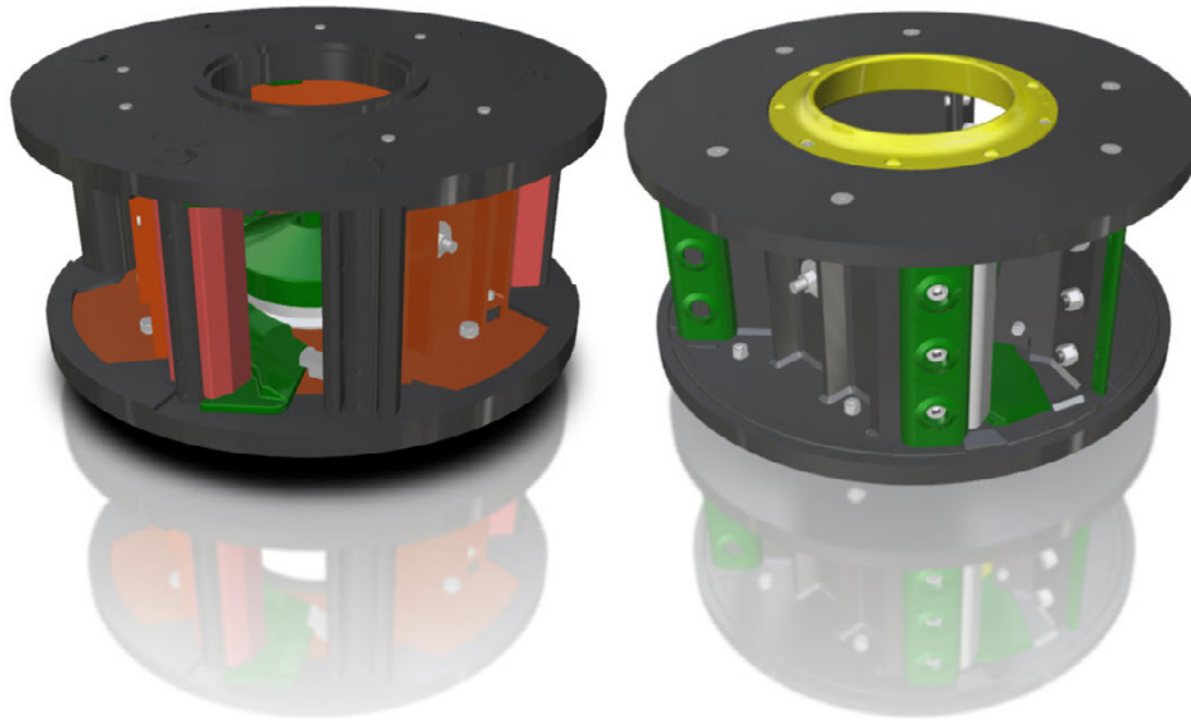
- Specially designed to remove breaker plate liners
- Makes crusher maintenance easier and safer
- Reduced downtime with faster and more efficient changeouts
- Backed by OEM

# Breaker plate liner lifting tools

Designed for lifting Nordberg® NP Series™ impact crusher wear parts

| Machine                      | Tool                             | Load limit (kg) | Item code |
|------------------------------|----------------------------------|-----------------|-----------|
| NP1110, NP20, NP1520, NP1620 | Breaker plate liner lifting tool | 150             | N91080041 |
| NP1213, NP1313               | Breaker plate liner lifting tool | 80              | N91080042 |
| NP13                         | Breaker plate liner lifting tool | 80              | MM0905503 |
| NP15, NP1315, NP1415         | Breaker plate liner lifting tool | 150             | N91080043 |





### Features and benefits:

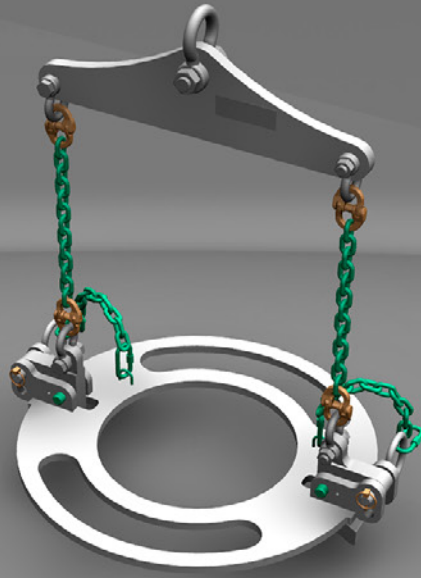
- Safely forces the rotor from the taper lock
- Makes maintenance safer and more efficient
- All of the rotor lifting plates are load tested

# Rotor lifting plate

Designed for lifting Barmac® B Series™ vertical shaft impact (VSI) crusher wear parts

| Lifting tool | Model  | Load limit (kg) |
|--------------|--|-----------------|
| B48AS13B     | B4800, B5000, B5100, B5100SE   | 500             |
| B69AS12C     | MkI Rotopactor MkI Duopactor, B6000, B6100, B6150SE, B7000, B7100                              | 1,000           |
| B96AS12C     | MkII Rotopactor, MkII Duopactor, MkIII Duopactor, B7150SE, B8000, B8100, B9000, B9100, B9100SE | 1,000           |





### Features and benefits:

- Designed for third party cone crushers
- High quality backed by OEM know-how
- Improved safety and maintenance
- Reduced downtime and more efficient change-outs

# X-Series mantle lifting tools

Designed for lifting Sandvik®\* CH Series™ cone crusher wear parts

| Machine       | Tool                | Load limit (kg) | Item code |
|---------------|---------------------|-----------------|-----------|
| CH430 (H3000) | Mantle lifting tool | 2,500           | MM1230512 |
| CH440 (H4000) | Mantle lifting tool | 4,200           | MM1218198 |
| CH660 (H6000) | Mantle lifting tool | 7,000           | MM1230513 |



\* Sandvik is a registered trademark of Sandvik Intellectual Property AB, use of the mark does not imply any affiliation with or endorsement by them.



## Lifting tools for primary crusher concaves

Carousels for Metso-designed concaves. Suitable for any primary gyratory crushers, regardless of the brand.

Instead of working with one concave at a time, Metso Primary Gyratory lifting tools enable you to remove or install several concaves simultaneously. The removal tray allows you to remove several worn concaves at once. Similarly, the new concaves are pre-installed in the carousel, and the entire concave row (or tier) is moved into the crusher safely at the same time.

### Features and benefits:

- Carousels can be designed for concaves with threaded lifting insert, or for concaves with cast lifting lug
- Improved safety due to fewer lifts needed
- Increased uptime thanks to faster liner replacement
- Backed by OEM



Visit our website  
[metso.com/crusher-tools](https://metso.com/crusher-tools)



Read about Metso  
wear parts



Browse our  
customer cases

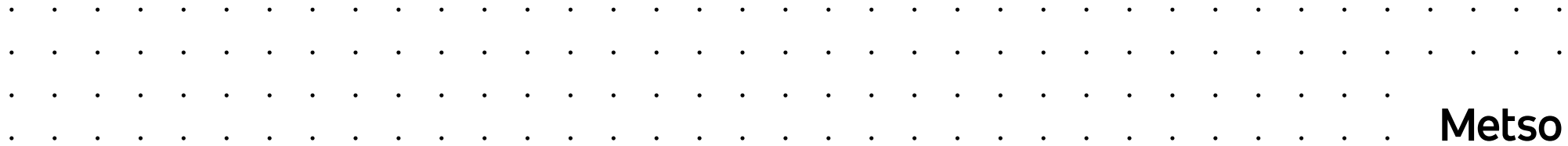


Contact us



Metso is a frontrunner in providing sustainable technologies, end-to-end solutions and services for the aggregates, minerals processing and metals refining industries globally. By helping our customers increase their productivity, improve their energy and water efficiency and environmental performance with our process and product expertise, we are the **partner for positive change**.

[metso.com](https://metso.com)



**Metso**