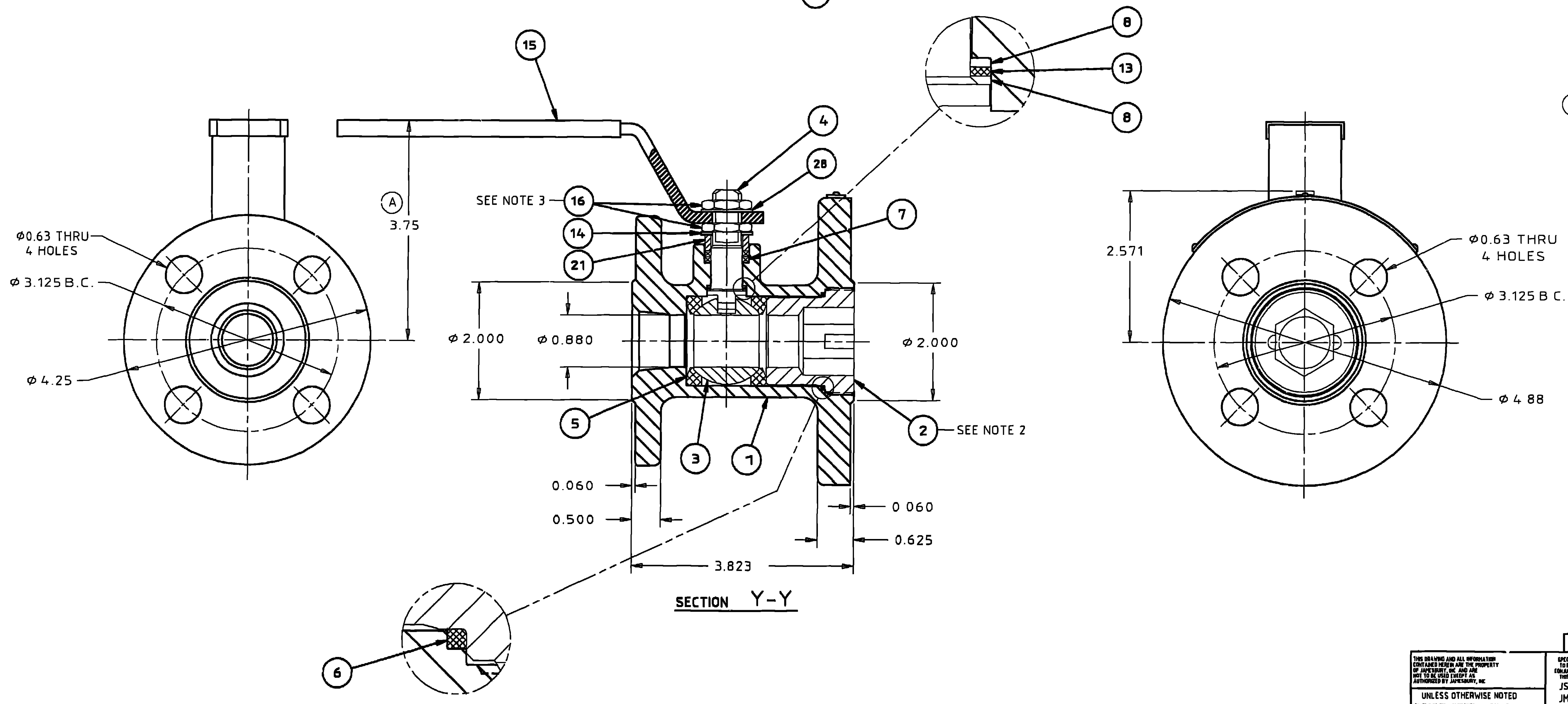


ITEM NO	PART NAME	QTY
1	BODY	1
2	INSERT	1
3	BALL	1
4	STEM	1
5	SEAT	2
6	BODY SEAL	1
7	STEM SEAL	2
(A) 8	STEM BEARING	2
13	SECONDARY STEM SEAL	1
(A) 14	STEM WASHER	1
15	HANDLE	1
(A) 16	STEM NUT	2
21	COMPRESSION RING	1
22	IDENTIFICATION TAG	1
(A) 28	SHAKEPROOF WASHER	1
(A) 31	POP RIVET	3

LET	ECN	REVISION	DR	APPRD	DATE
A	15999	SEE ECN FOR CHANGES	PJD	RET	19 FEB 96
B	17325	IN NOTE 3 70-80 IN. LBS. WAS 60-72 IN. LBS.	BA	SAL	16 DEC 98



- NOTES:
- FOR INSTALLATION, MAINTENANCE AND OPERATING INSTRUCTIONS SEE IMO-R12
 - INSERT ASSEMBLY TORQUE: 125 - 150 FT. LBS.
 - (B) STEM NUT ASSEMBLY TORQUE 70 - 80 IN. LBS.
 - TAG ATTACHMENT PER JMA-98.

THIS DRAWING AND ALL INFORMATION CONTAINED HEREIN ARE THE PROPERTY OF JAMESBURY, INC. AND ARE NOT TO BE COPIED, REPRODUCED, OR TRANSMITTED IN ANY FORM OR BY ANY MEANS, ELECTRONIC OR MECHANICAL, INCLUDING PHOTOCOPYING, RECORDING, OR BY ANY INFORMATION STORAGE AND RETRIEVAL SYSTEM, WITHOUT THE WRITTEN PERMISSION OF JAMESBURY, INC.

UNLESS OTHERWISE NOTED DIMENSIONS, TOLERANCES, & DRAWING INTERPRETATION IS IN ACCORDANCE WITH ANSI Y14.5M

ANGLES - 15° FINISH -

REMOVE SHARP EDGES AND CORNERS TO R1 - R1 RADIUS ON CHAMFER, DIMENSIONS IN INCHES.

MATERIAL CODE	MATERIAL TYPE	MATERIAL SPECIFICATIONS	IDENT NUMBER
JSA-53	JMA-98	DD NOT SCALE DRAWING	SCALE 1:1
TITLE		DATE	DATE
ASSEMBLY		8 DEC 95	8 DEC 95
1" 5RRR REDUCED PORT RAILROAD VALVE		APPVD	DATE
		RET	8 DEC 95
SIZE DWG NO		REV	
D 5295		B	

JAMESBURY
NELES CONTROL GROUP
WORCESTER MA., U.S.A.