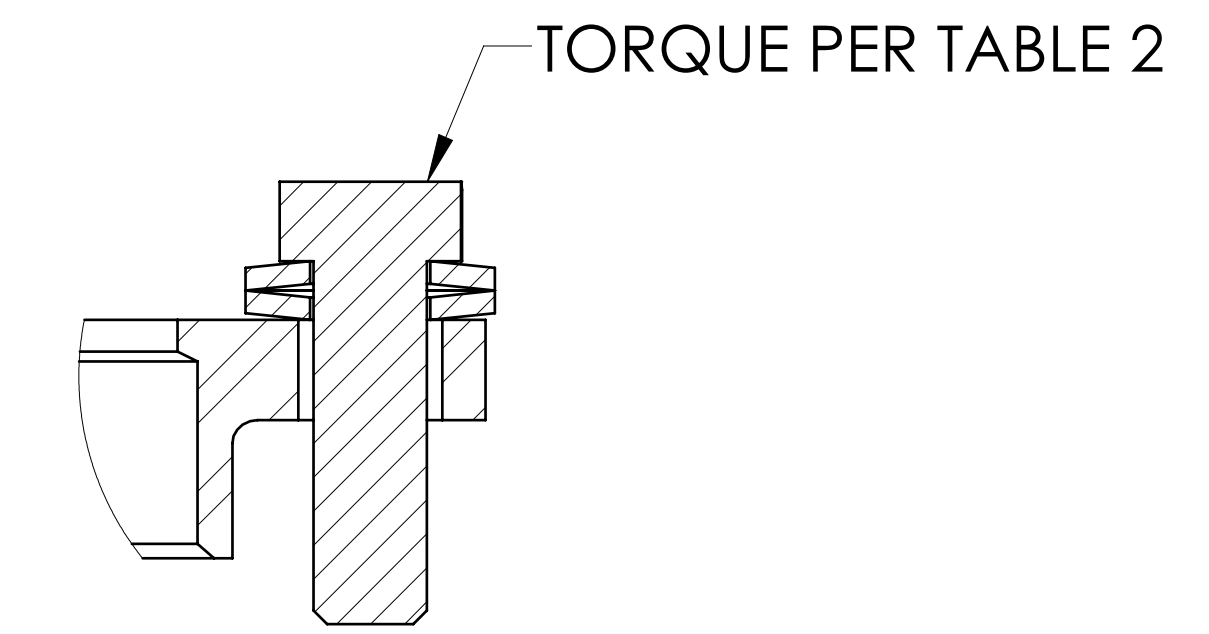
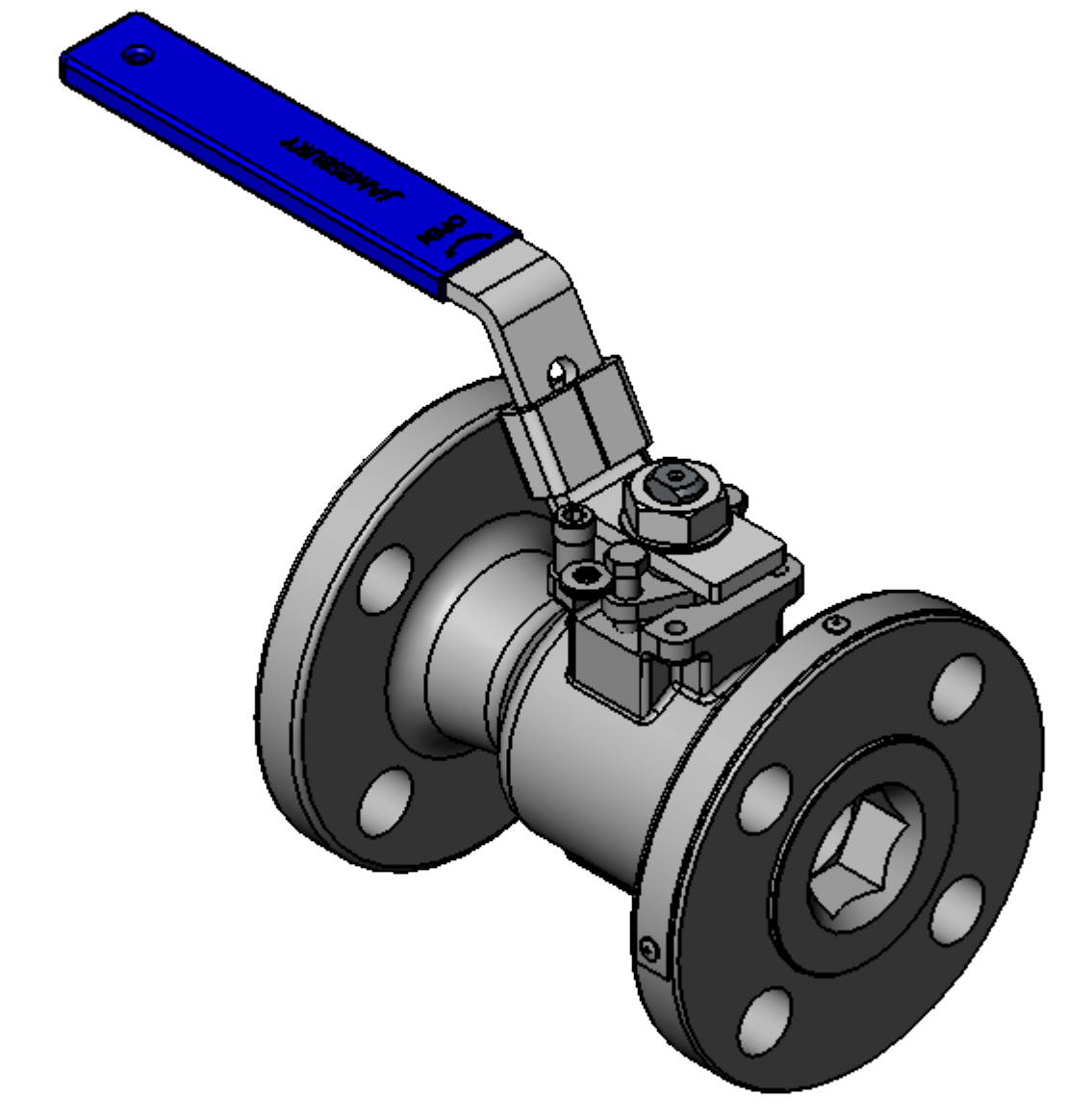
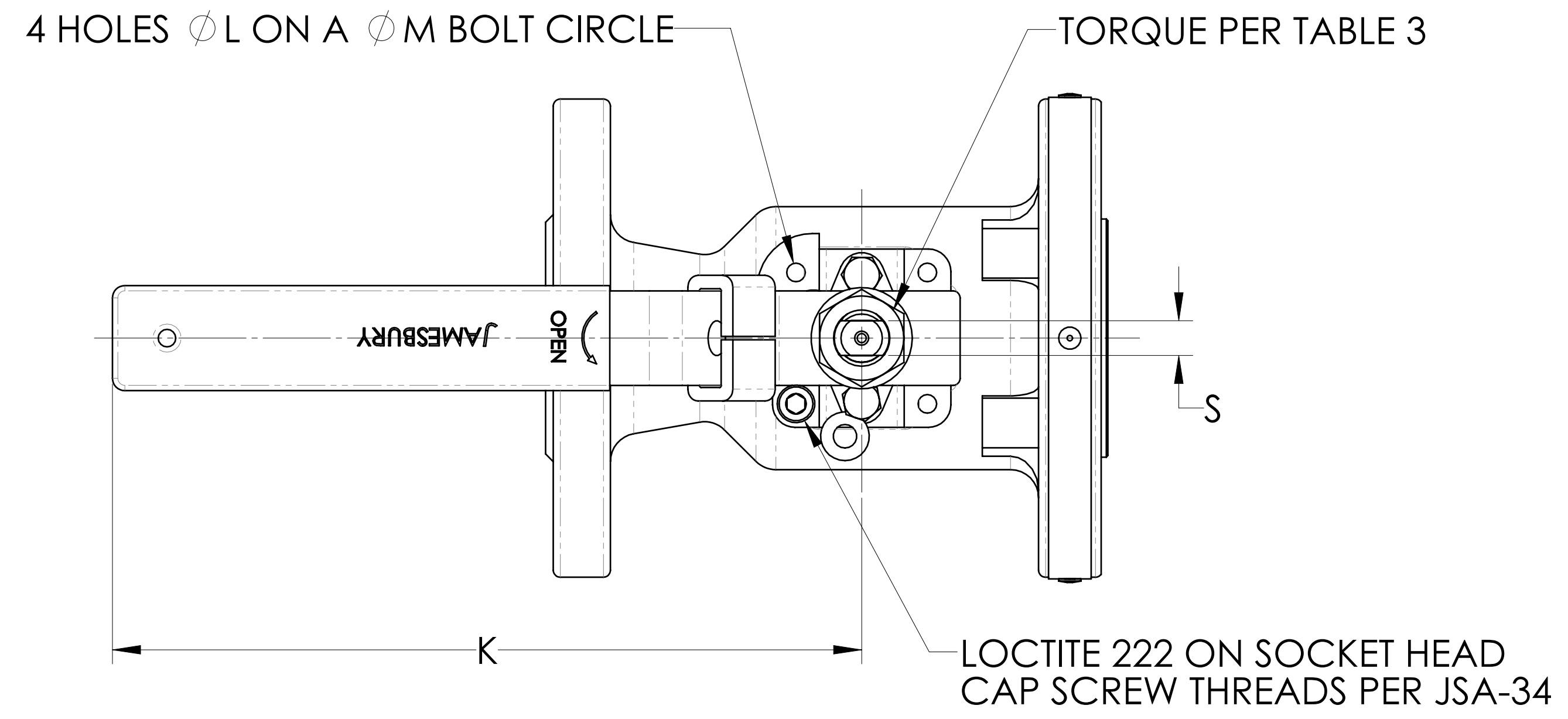
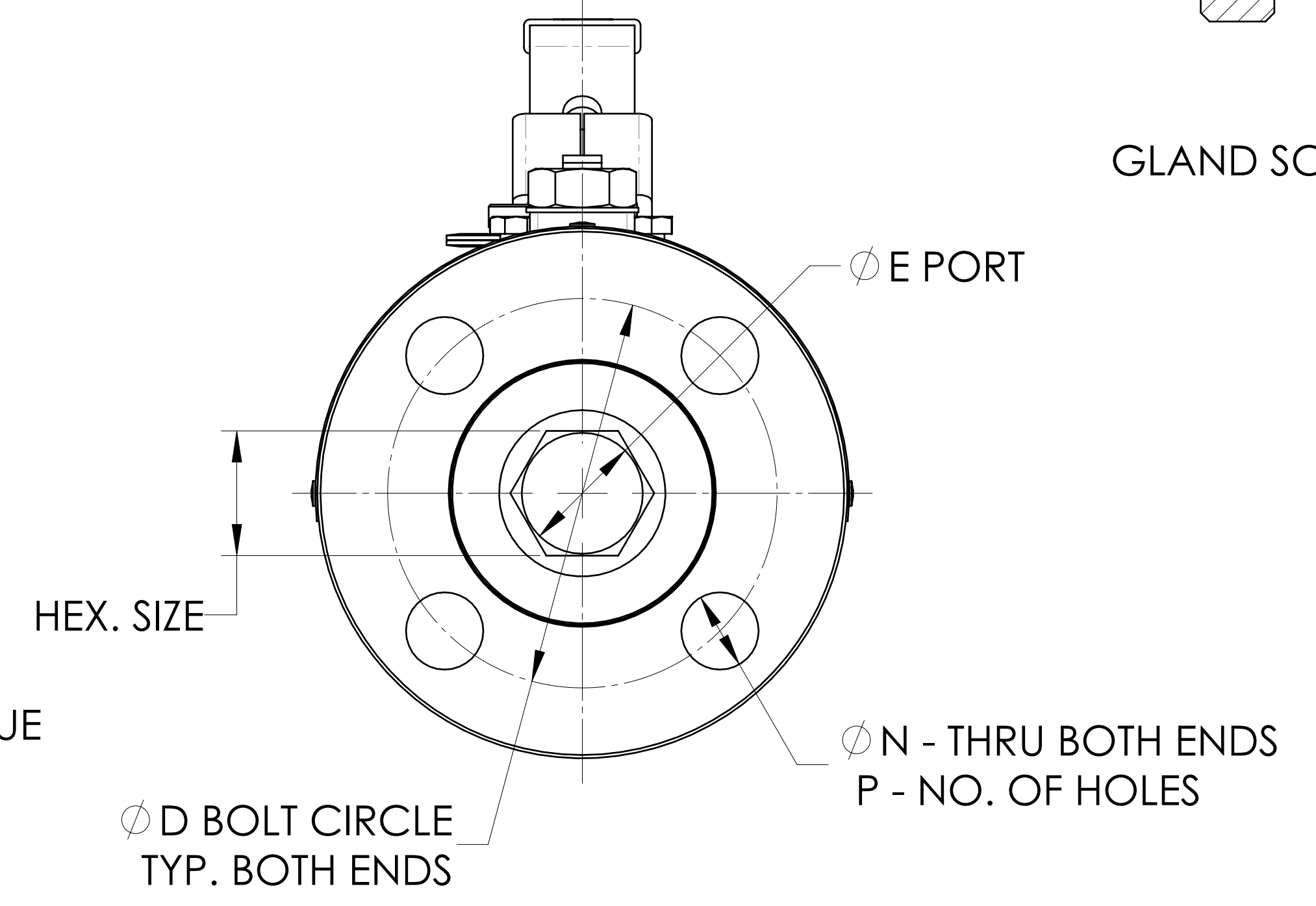
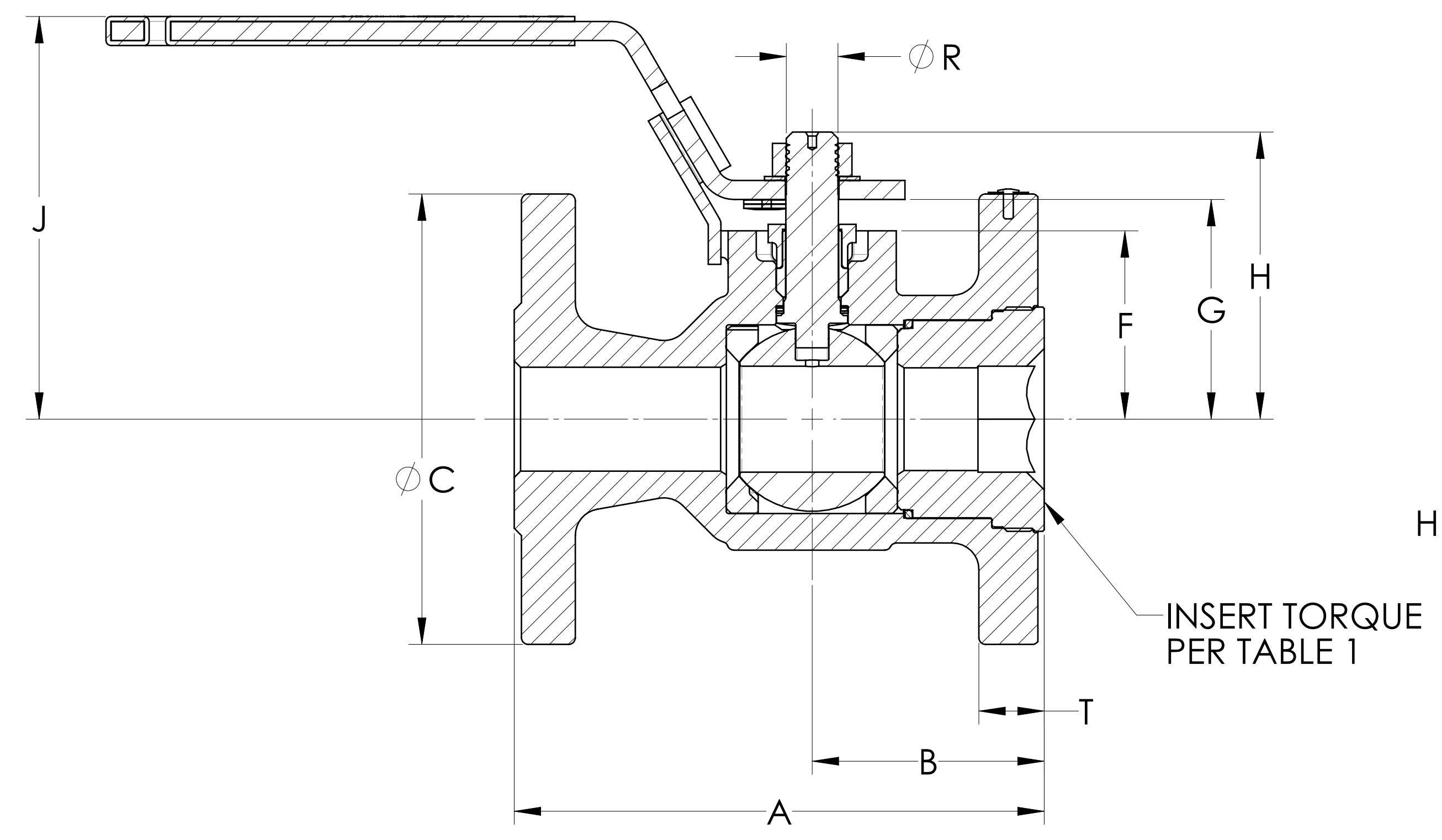


LET	ECN	REVISION	DRAWN	APPROVED	DATE
F	43377	UPDATED TORQUE VALUES IN TABLE 3	MLL	WP	4/18/16
G	44340	UPDATED ITEM NO. CALLOUT IN EXPLODED VIEW	MLL	WP	4/20/17



GLAND SCREW ASSEMBLY



- NOTES:
1. TAG ATTACHMENT PER JMA-98.
 2. FOR INSTALLATION, MAINTENANCE AND OPERATING INSTRUCTIONS, SEE IMO-214.

NOMINAL DIMENSIONS - INCHES

VALVE SIZE	A	B	C	D	E	F	G	H	J	K	L	M	N	P	R	S	T	HEX. SIZE	ISO BONNET
1/2"	4.250	1.940	3.500	2.380	0.500	1.060	1.280	1.630	3.400	5.000	M5	1.420	0.620	4	0.310	0.180	0.500	0.500	F03
3/4"	4.630	2.190	3.880	2.750	0.880	1.650	1.990	2.580	3.670	6.500	M5	1.650	0.620	4	0.500	0.310	0.630	0.880	F04
1"	5.000	2.190	4.250	3.120	1.000	1.780	2.120	2.710	3.800	6.500	M5	1.650	0.620	4	0.500	0.310	0.630	1.000	F04
1 1/2"	6.500	2.640	5.000	3.880	1.500	2.260	2.730	3.490	4.460	8.000	M6	1.970	0.620	4	0.620	0.370	0.690	1.500	F05

THIS DRAWING AND ALL INFORMATION CONTAINED HEREIN ARE THE PROPERTY OF METSO AND ARE NOT TO BE USED EXCEPT AS AUTHORIZED IN WRITING BY METSO.

UNLESS OTHERWISE NOTED DIMENSIONING, TOLERANCING, & DRAWING INTERPRETATION IS IN ACCORDANCE WITH ASME Y14.5M

ANGLES = ±5° FINISH REMOVE SHARP EDGES AND CORNERS TO .02-.03 RADIUS OR CHAMFER, DIMENSIONS IN INCHES.

SPECIFICATIONS TO BE USED IN CONJUNCTION WITH THIS DRAWING

MAKE FROM PART NO.

RESTRICTED

TITLE: ASSEMBLY 1/2" - 1 1/2" SERIES 9150 VALVE

DRAWN: MJW DATE: 6/25/03

APPVD: DRE DATE: 6/25/03

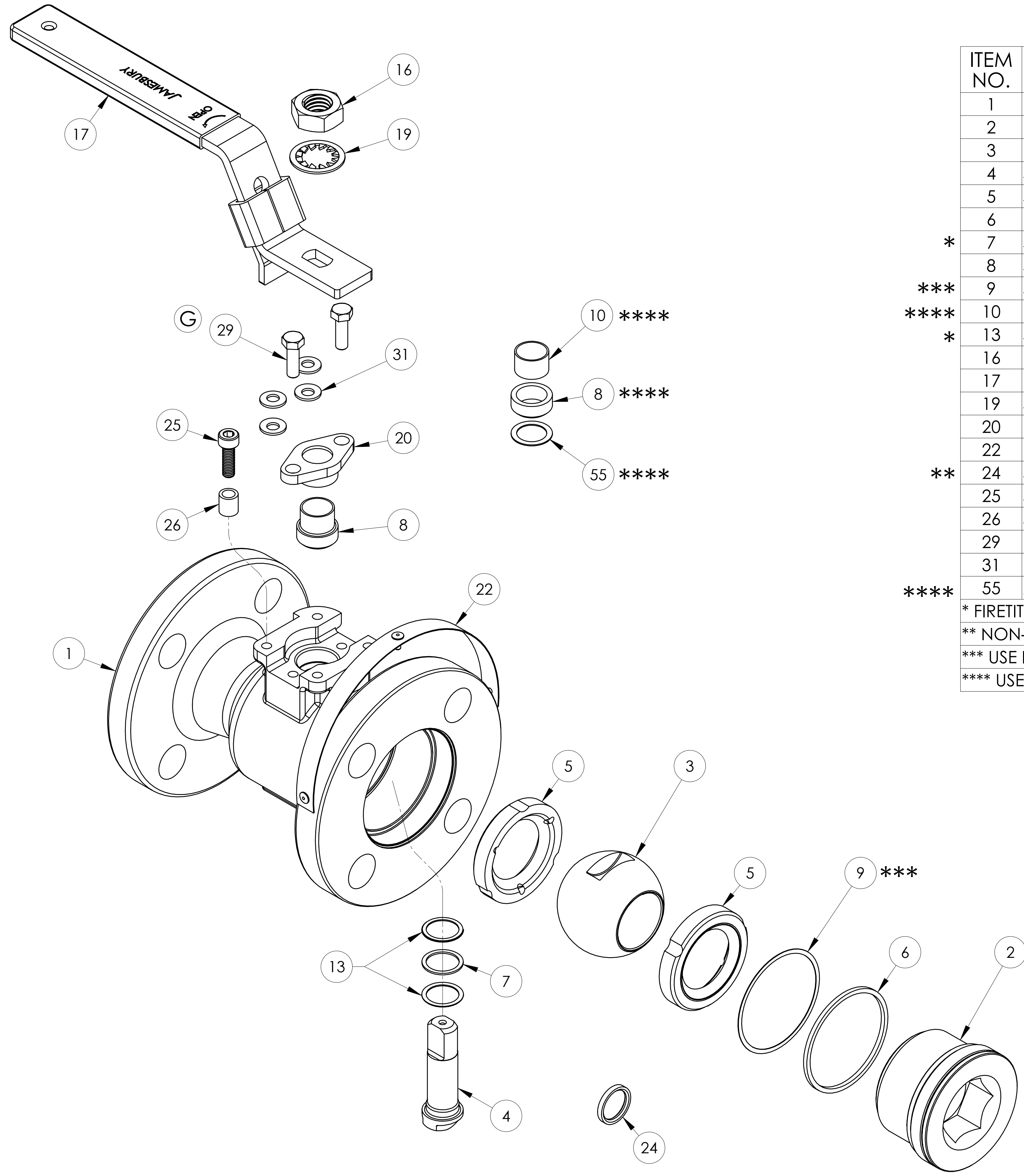
REV: G

SIZE: D DWG NO: 5446

SHREWSBURY, MASSACHUSETTS

© 2016 Metso

LET	ECN	REVISION	DRAWN	APPROVED	DATE
F	43377	UPDATED TORQUE VALUES IN TABLE 3	MLL	WP	4/18/16
G	44340	UPDATED ITEM NO. CALOUT IN EXPLODED VIEW	MLL	WP	4/20/17



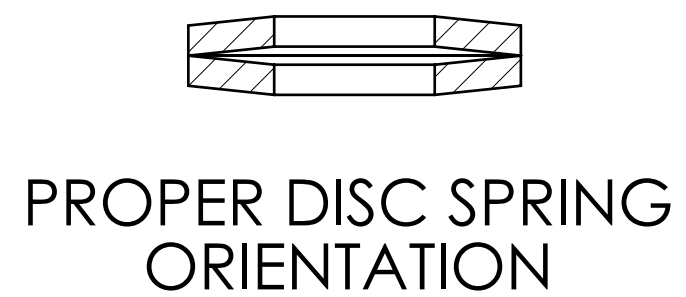
ITEM NO.	DESCRIPTION	QTY.
1	BODY	1
2	INSERT	1
3	BALL	1
4	STEM	1
5	SEAT	2
6	BODY SEAL	1
* 7	SECONDARY STEM SEAL	1
8	STEM SEAL	1
*** 9	SUPPORT RING	1
**** 10	UPPER STEM BEARING	1
* 13	STEM BEARING	2
16	HANDLE NUT	1
17	HANDLE	1
19	SHAKEPROOF WASHER	1
20	COMPRESSION PLATE	1
22	IDENTIFICATION TAG	1
** 24	STEM BEARING NON-FIRETITE	1
25	SOCKET HEAD CAP SCREW	1
26	SPACER	1
29	HEX. HEAD CAP SCREW	2
31	DISC SPRING	4
**** 55	ANTI-EXTRUSION RING	1

* FIRETITE VALVES ONLY
 ** NON-FIRETITE VALVES ONLY
 *** USE ITEM 9 FOR 1" AND 1 1/2" GRAPHITE BODY SEALS ONLY
 **** USED FOR GRAPHITE UPPER STEM SEALS ONLY

VALVE SIZE	TORQUE LB. - FT. (±10%)
1/2"	100
3/4"	150
1"	200
1 1/2"	350

VALVE SIZE	TORQUE LB. - IN.
1/2"	15
3/4" & 1"	20
1-1/2"	32

VALVE SIZE	TORQUE LB. - FT.
1/2"	7-11
3/4" & 1"	19-26
1-1/2"	29-36



THIS DRAWING AND ALL INFORMATION CONTAINED HEREIN ARE THE PROPERTY OF METSO AND ARE NOT TO BE USED EXCEPT AS AUTHORIZED IN WRITING BY METSO.

UNLESS OTHERWISE NOTED DIMENSIONING, TOLERANCING, & DRAWING INTERPRETATION IS IN ACCORDANCE WITH ASME Y14.5M

ANGLES = ±5° FINISH 250 REMOVE SHARP EDGES AND CORNERS TO .02 - .03 RADIUS OR CHAMFER, DIMENSIONS IN INCHES.

SHREWSBURY, MASSACHUSETTS

RESTRICTED

TITLE: ASSEMBLY 1/2" - 1 1/2" SERIES 9150 VALVE

DATE: 6/25/03

REV: G

SIZE: D DWG NO: 5446

© 2016 Metso