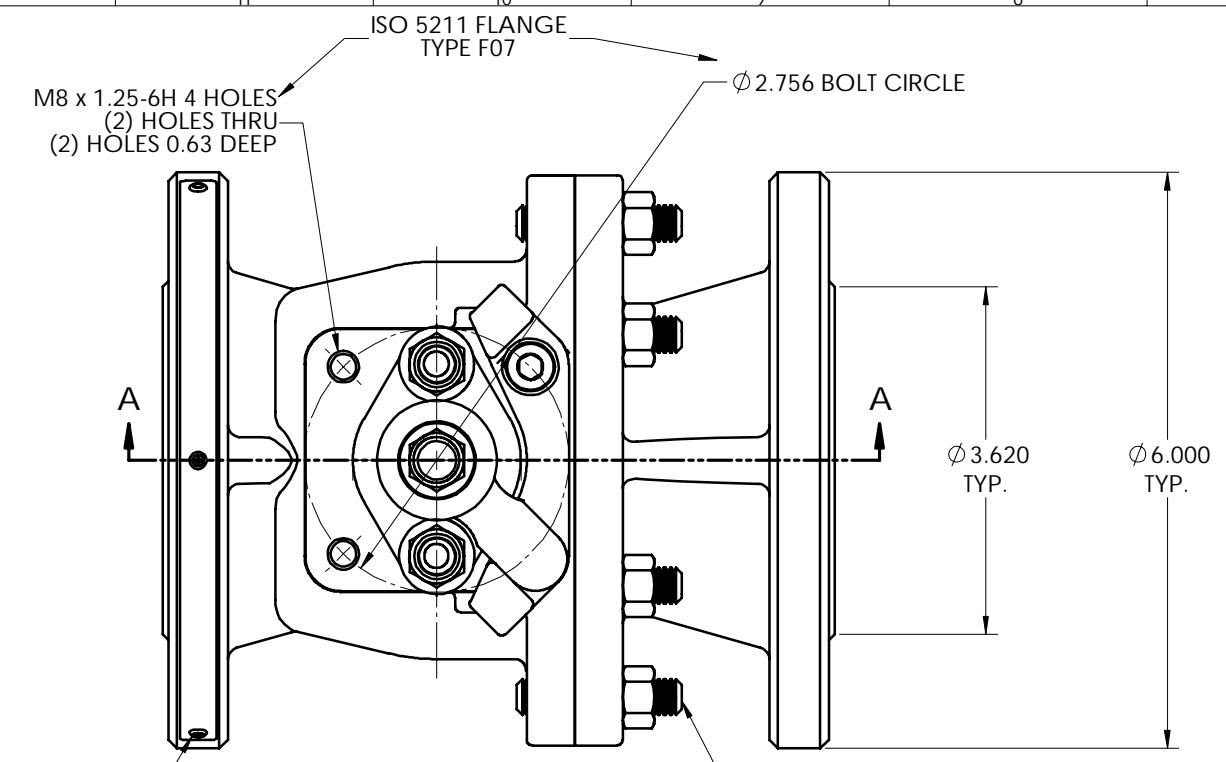
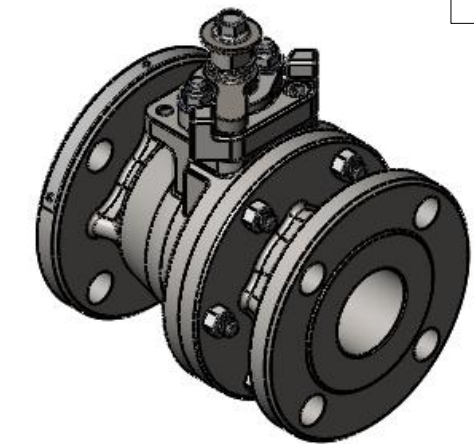


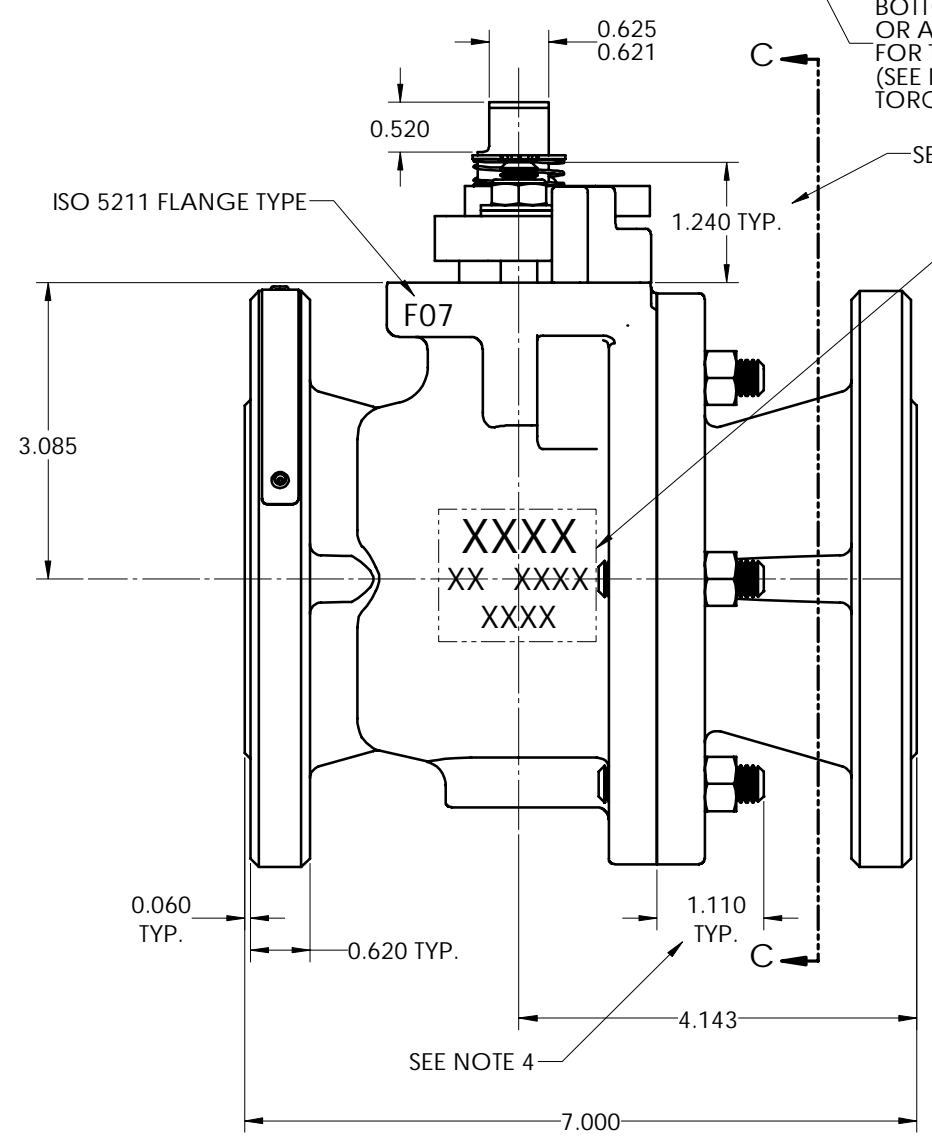
LET	ECN	REVISION	DRAWN	APPROVED	DATE
A	43653	REVISED NOTE 5 ADDED (ESNA) TO ITEM 30	PJD	KAS	4/13/16
B	43764	REMOVED METRIC DIMENSIONS REVISED NOTE 5 ADDED NOTE 6	PJD	KAS	6/10/16

- NOTES:
- ATTACH IDENTIFICATION TAG PER JMA-98.
 - FOR INSTALLATION, MAINTENANCE & OPERATING INSTRUCTIONS SEE IMO-R29.
 - WHERE IDENTIFICATION APPEARS ON NUT OR STUD FACE, ASSEMBLE WITH IDENTIFICATION ALWAYS VISIBLE.
 - STUD HEIGHT IS ONLY APPLICABLE WHEN USING CONTINUOUS THREADED STUDS. WHEN USING CONTINUOUS THREADED STUDS, USE LOCTITE #271 ON STUD THREADS INTO BODY PER JSA-34. DOUBLE ENDED STUDS DO NOT REQUIRE LOCTITE.
 - DIMENSIONS ARE IN INCHES. (A) (B)
 - SEE INSTRUCTIONAL DRAWING I-1774 FOR HANDLE OPTIONS AND DIMENSIONS. (B)

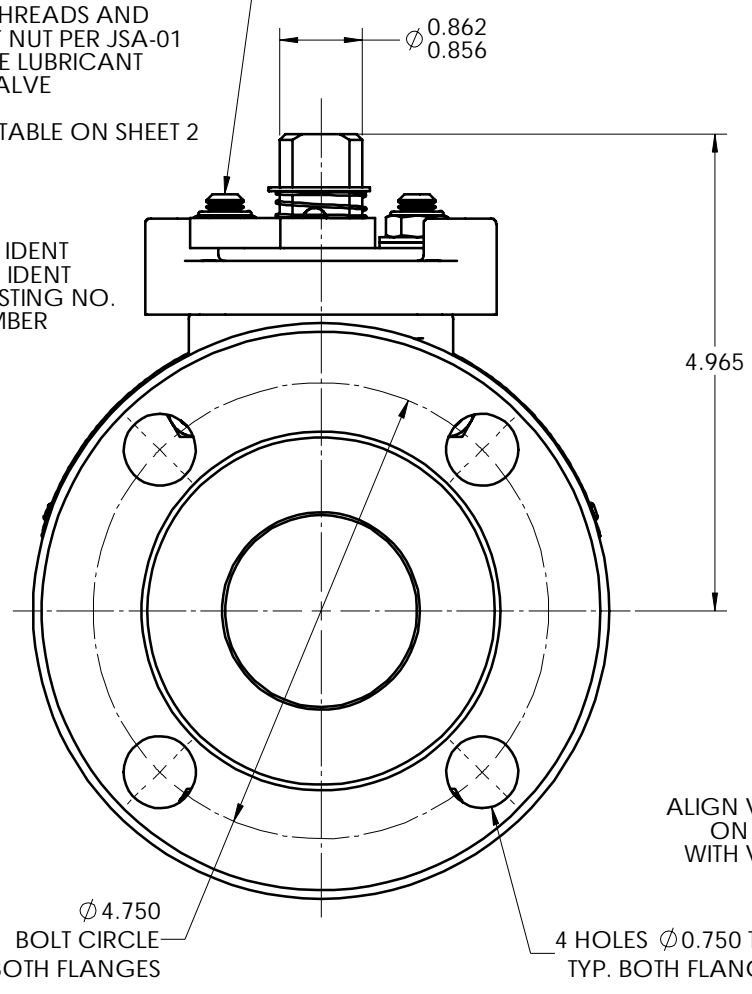


LUBRICATE STUD THREADS AND BOTTOM FACE OF NUT PER JSA-01 OR A COMPATIBLE LUBRICANT FOR THE GIVEN VALVE (SEE NOTE 3) TORQUE NUT TO 4 FT.-LBS.

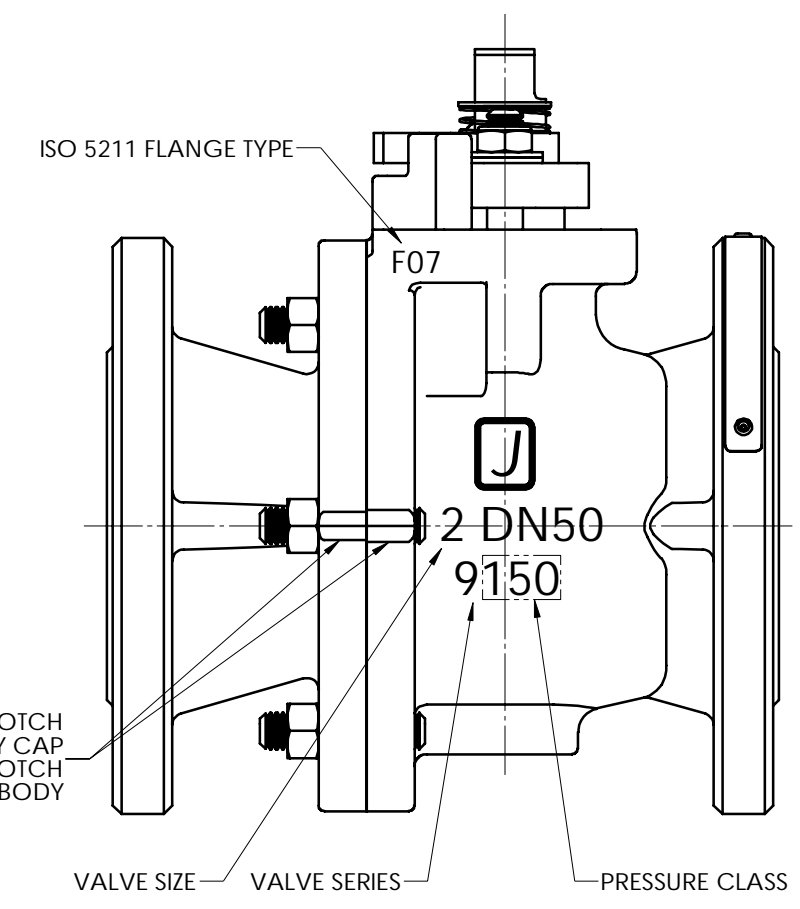
LUBRICATE STUD THREADS AND BOTTOM FACE OF NUT PER JSA-01 OR A COMPATIBLE LUBRICANT FOR THE GIVEN VALVE (SEE NOTE 3) TORQUE NUT PER TABLE ON SHEET 2



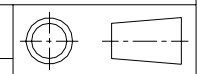
MATERIAL IDENT
FOUNDRY IDENT
BODY CASTING NO.
HEAT NUMBER



ALIGN VEE NOTCH ON BODY CAP WITH VEE NOTCH ON BODY



© 2016 Metso



THIS DRAWING AND ALL INFORMATION CONTAINED HEREIN ARE THE PROPERTY OF METSO AND ARE NOT TO BE USED EXCEPT AS AUTHORIZED IN WRITING BY METSO

SPECIFICATIONS TO BE USED IN CONJUNCTION WITH THIS DRAWING
JSA-01, JST-02
JSA-10, JSA-17
JSA-34
JMA-98
IMO-R29

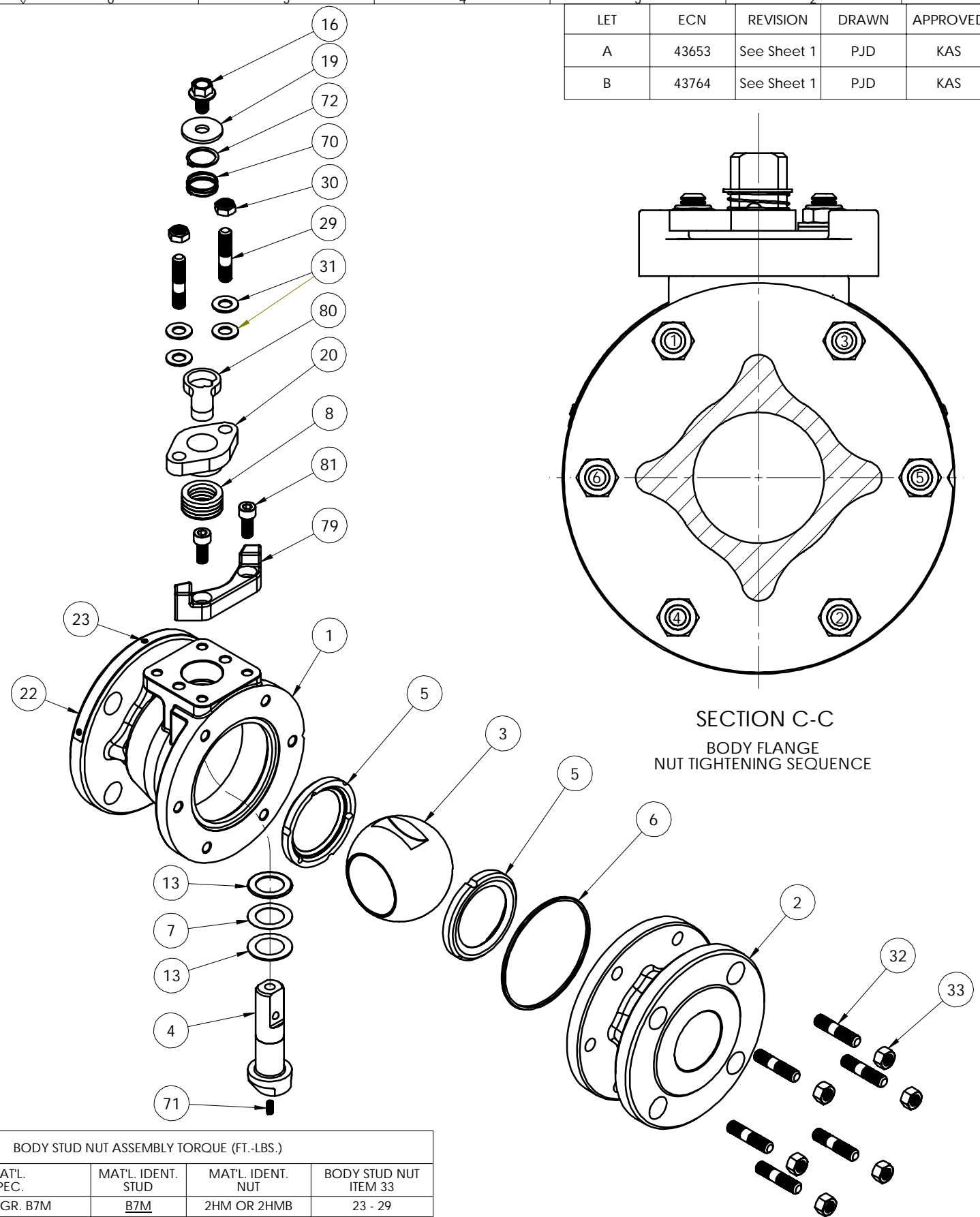
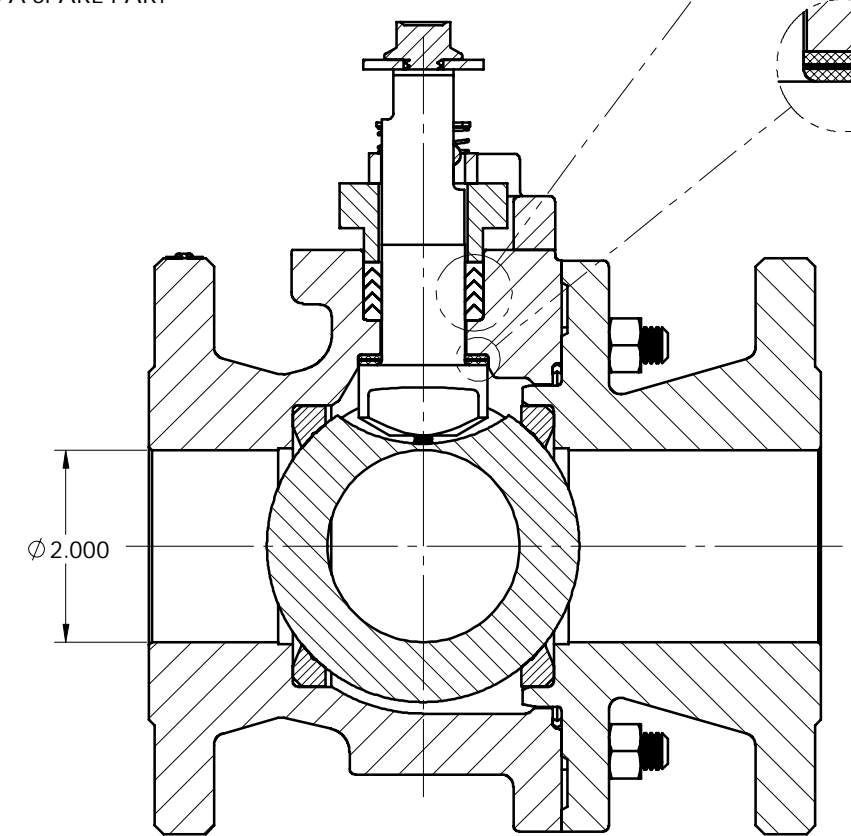
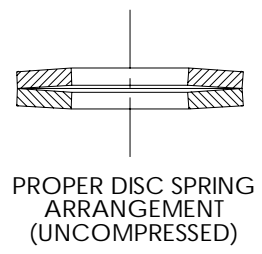
RESTRICTED		DATE
TITLE: VALVE ASSEMBLY 2" SERIES 9150RR MODEL C FULL BORE ASME CLASS 150 FLANGED BALL VALVE	DRAWN PJD	6/22/18
	APPVD. KAS	DATE 7/1/15



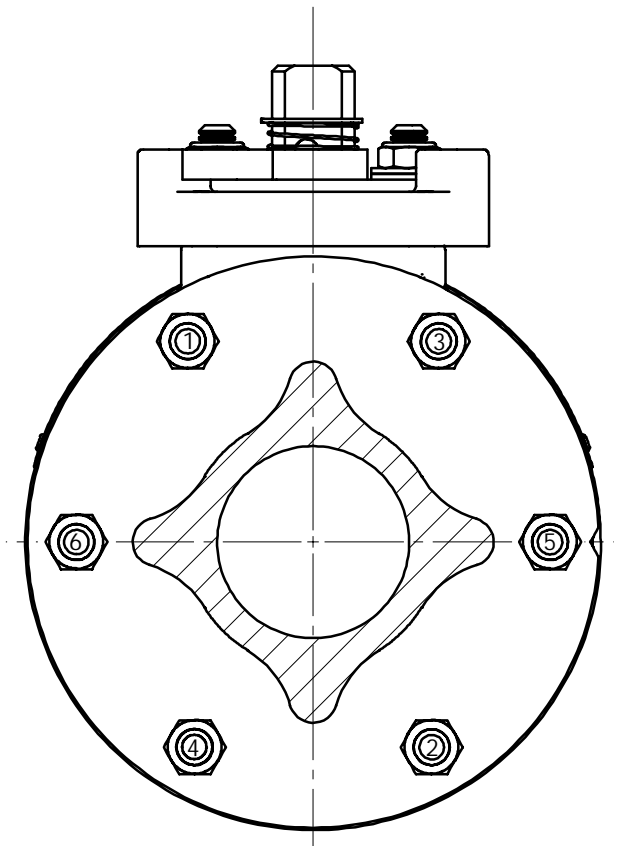
SIZE	DWG NO	REV
D	5571	B

ITEM NO.	DESCRIPTION	QTY.	SPARE PART
1	BODY	1	N/A
2	BODY CAP	1	N/A
3	BALL	1	B
4	STEM	1	B
5	SEAT	2	A
6	BODY SEAL	1	A
7	SECONDARY STEM SEAL	1	A
8	STEM SEAL	1	A
13	STEM BEARING	2	A
16	HEX. HEAD CAP SCREW	1	B
17	HANDLE (SEE NOTE 6)	1	B
19	FLAT WASHER	1	B
20	COMPRESSION PLATE	1	B
22	IDENTIFICATION TAG	1	N/A
23	POP RIVET	3	N/A
29	BONNET STUD	2	B
30	BONNET STUD NUT (ESNA)	2	B
31	DISC SPRING	4	B
32	BODY STUD	6	B
33	BODY STUD NUT	6	B
70	TOP GROUNDING SPRING	1	B
71	BOTTOM GROUNDING SPRING	1	B
72	RETAINING RING	1	B
79	TRAVEL STOP	1	B
80	INDICATOR STOP	1	B
81	SOCKET HEAD CAP SCREW	2	B

A= PART SUPPLIED IN SPARE PART SET
 B= PART MAY BE ORDERED AS REQUIRED FOR REPAIR
 N/A= NOT AVAILABLE AS A SPARE PART



LET	ECN	REVISION	DRAWN	APPROVED	DATE
A	43653	See Sheet 1	PJD	KAS	4/13/16
B	43764	See Sheet 1	PJD	KAS	6/10/16



MAT'L. CODE	MAT'L. SPEC.	MAT'L. IDENT. STUD	MAT'L. IDENT. NUT	BODY STUD NUT ITEM 33
19	A-193 GR. B7M	<u>B7M</u>	2HM OR 2HMB	23 - 29
20	A-193 GR. B7	B7	2H OR 2HB	30 - 38
31	A-193 GR. B8	<u>B8, B8C OR B8T</u>	<u>8B, 8CB OR 8TB</u>	24 - 29
35	B-473 CARPENTER 20Cb-3	A20	A20	9 - 11
71	QQ-N-286	K	K	23 - 28

THIS DRAWING AND ALL INFORMATION CONTAINED HEREIN ARE THE PROPERTY OF METSO AND ARE NOT TO BE USED EXCEPT AS AUTHORIZED IN WRITING BY METSO

RESTRICTED

TITLE: VALVE ASSEMBLY
2" SERIES 9150RR MODEL C
FULL BORE ASME CLASS 150
FLANGED BALL VALVE

DATE: 6/22/18
DRAWN: PJD
DATE: 7/1/15
APPVD: KAS
REV: B

© 2016 Metso

metso
SHREWSBURY, MASSACHUSETTS

SIZE: D
DWG NO: 5571
REV: B

SHEET 2 OF 2