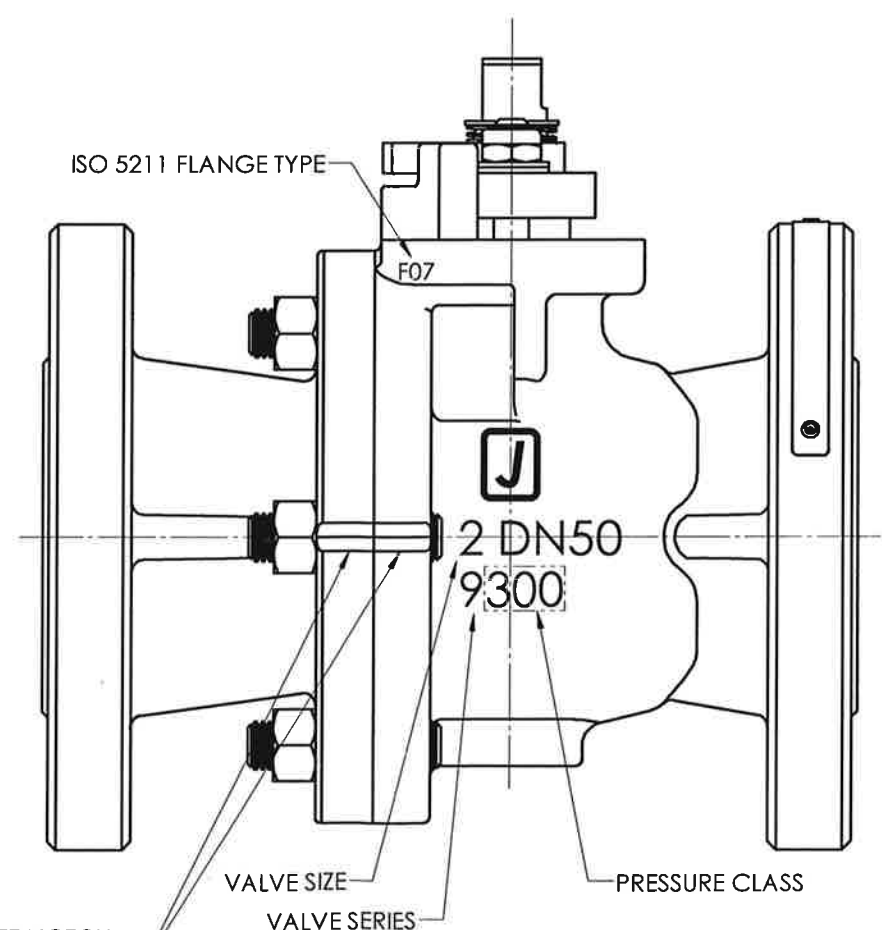
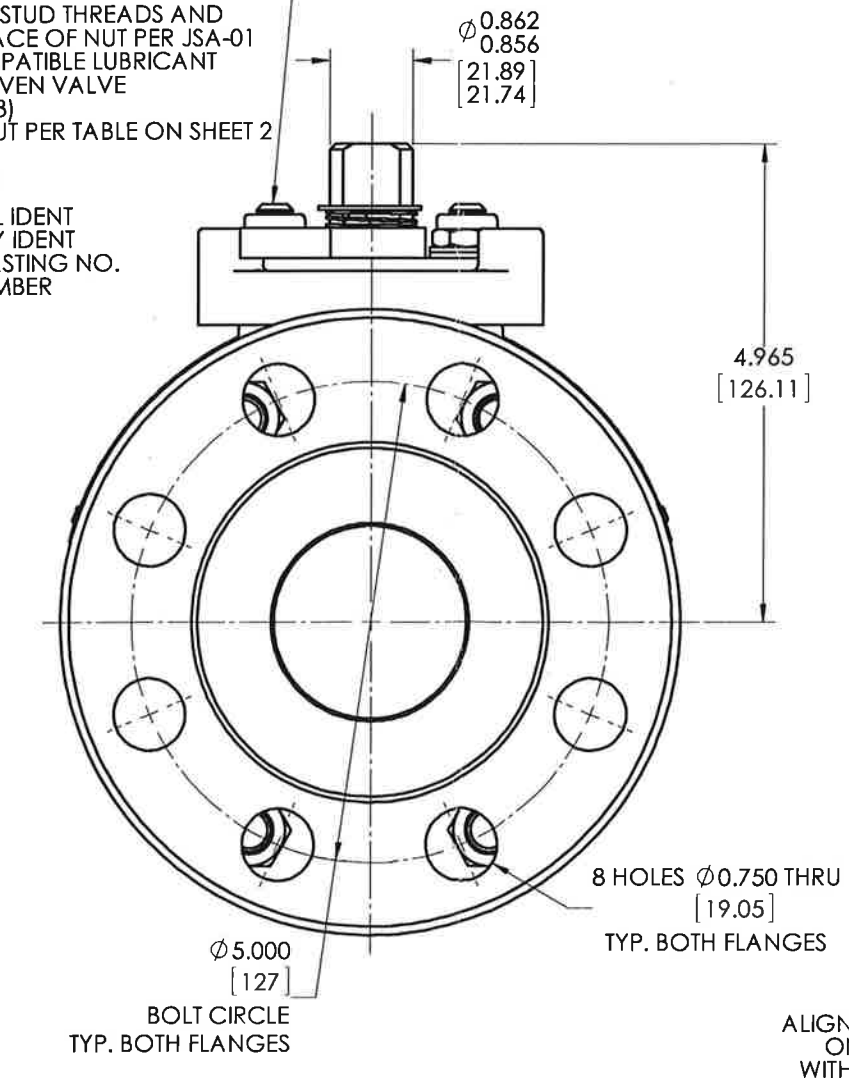
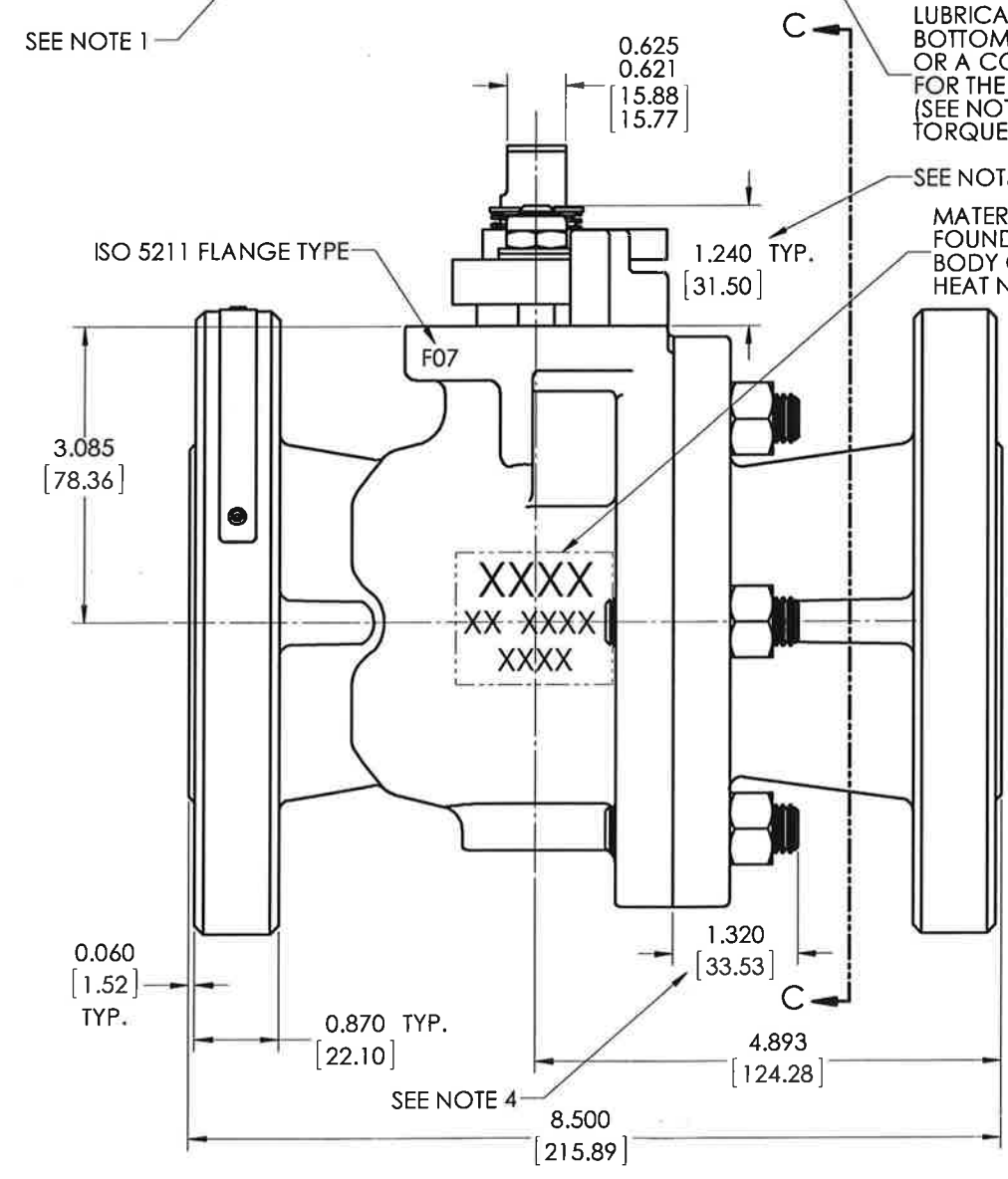


- NOTES:
1. ATTACH IDENTIFICATION TAG PER JMA-98.
 2. FOR INSTALLATION, MAINTENANCE & OPERATING INSTRUCTIONS SEE IMO-226.
 3. WHERE IDENTIFICATION APPEARS ON NUT OR STUD FACE, ASSEMBLE WITH IDENTIFICATION ALWAYS VISIBLE.
 4. STUD HEIGHT IS ONLY APPLICABLE WHEN USING CONTINUOUS THREADED STUDS. WHEN USING CONTINUOUS THREADED STUDS, USE LOCTITE #271 ON STUD THREADS INTO BODY PER JSA-34. DOUBLE ENDED STUDS **DO NOT** REQUIRE LOCTITE.
 5. DIMENSIONS IN [] ARE IN MILLIMETERS AND ARE BASED ON STANDARD DIMENSIONS SHOWN.



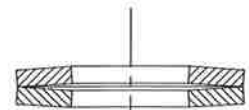
ALIGN VEE NOTCH ON BODY CAP WITH VEE NOTCH ON BODY

THIS DRAWING AND ALL INFORMATION CONTAINED HEREIN ARE THE PROPERTY OF METSO AND ARE NOT TO BE USED EXCEPT AS AUTHORIZED IN WRITING BY METSO

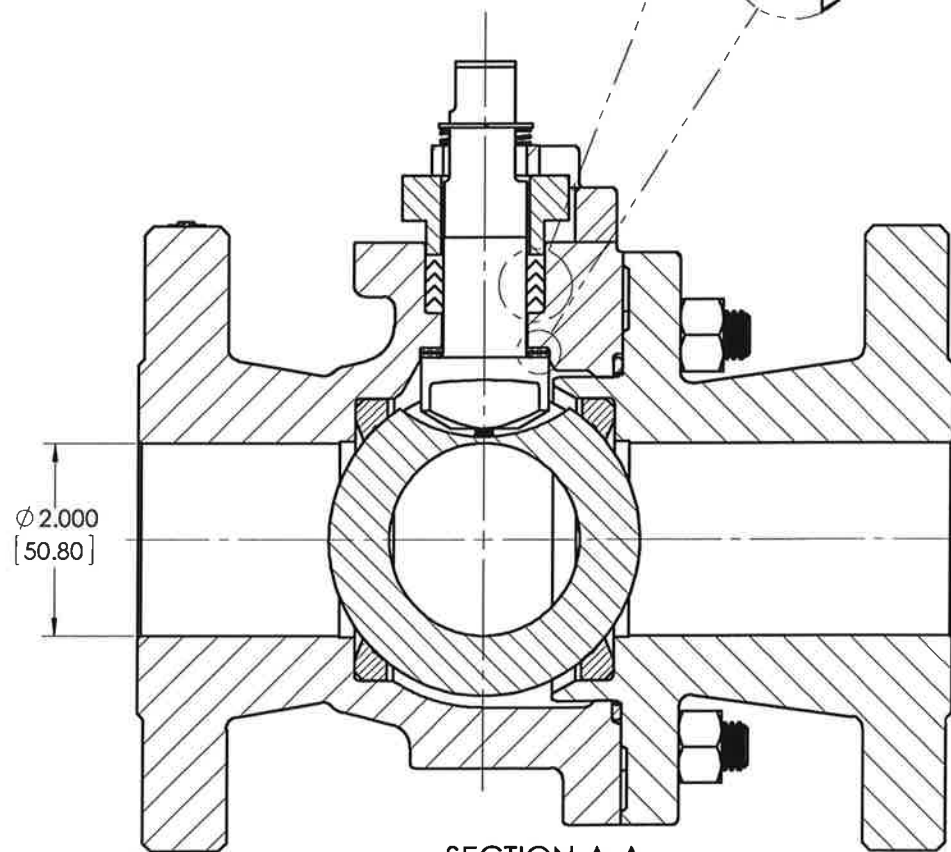
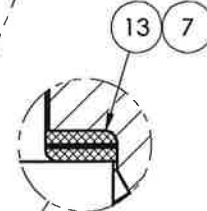
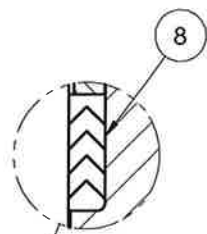
SPECIFICATIONS TO BE USED IN CONJUNCTION WITH THIS DRAWING		MAKE / BODY PART NO.		INTERNAL	
JSA-01, JST-02	JSA-10, JSA-17	TITLE: VALVE ASSEMBLY		DRAWN	DATE
JSA-34	JMA-98	2" SERIES 9300RR MODEL C		PJD	6/22/15
IMO-226		FULL BORE ASME CLASS 300		APPROV	DATE
		FLANGED BALL VALVE		KAS	7/1/15
SIZE	DWG NO	REV			
D	5572	0			

ITEM NO.	DESCRIPTION	QTY.	SPARE PART
1	BODY	1	N/A
2	BODY CAP	1	N/A
3	BALL	1	B
4	STEM	1	B
5	SEAT	2	A
6	BODY SEAL	1	A
7	SECONDARY STEM SEAL	1	A
8	STEM SEAL	1	A
13	STEM BEARING	2	A
20	COMPRESSION PLATE	1	B
22	IDENTIFICATION TAG	1	N/A
23	POP RIVET	3	N/A
29	BONNET STUD	2	B
30	BONNET STUD NUT	2	B
31	DISC SPRING	4	B
32	BODY STUD	6	B
33	BODY STUD NUT	6	B
70	TOP GROUNDING SPRING	1	B
71	BOTTOM GROUNDING SPRING	1	B
72	RETAINING RING	1	B
79	TRAVEL STOP	1	B
80	INDICATOR STOP	1	B
81	SOCKET HEAD CAP SCREW	2	B

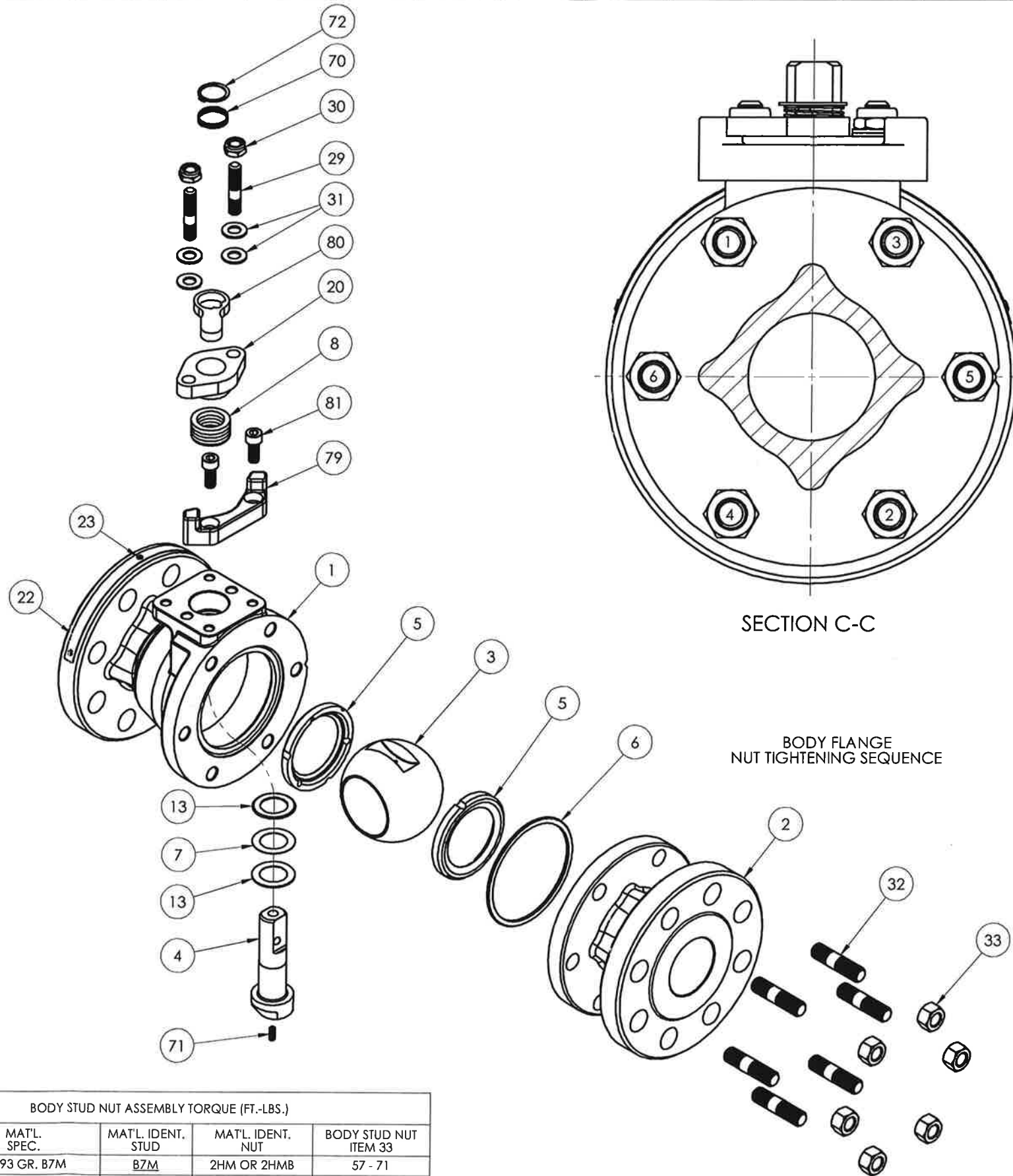
A= PART SUPPLIED IN SPARE PART SET
 B= PART MAY BE ORDERED AS REQUIRED FOR REPAIR
 N/A= NOT AVAILABLE AS A SPARE PART



PROPER DISC SPRING
ARRANGEMENT
(UNCOMPRESSED)



SECTION A-A



SECTION C-C

BODY FLANGE
NUT TIGHTENING SEQUENCE

BODY STUD NUT ASSEMBLY TORQUE (FT.-LBS.)				
MAT'L. CODE	MAT'L. SPEC.	MAT'L. IDENT. STUD	MAT'L. IDENT. NUT	BODY STUD NUT ITEM 33
19	A-193 GR. B7M	B7M	2HM OR 2HMB	57 - 71
20	A-193 GR. B7	B7	2H OR 2HB	75 - 93
31	A-193 GR. B8	B8, B8C OR B8T	B8, B8CB OR B8TB	57 - 70
35	B-473 CARPENTER 20Cb-3	A20	A20	22 - 27
71	QQ-N-286	K	K	58 - 71

© 2015 Metso

THIS DRAWING AND ALL INFORMATION CONTAINED HEREIN ARE THE PROPERTY OF METSO AND ARE NOT TO BE USED EXCEPT AS AUTHORIZED IN WRITING BY METSO

SPECIFICATIONS TO BE USED IN CONJUNCTION WITH THIS DRAWING JSA-01 JST-02 JSA-10 JSA-17 JSA-34 JMA-98 IMO-226		MAKE FROM PART NO.	INTERNAL	
TITLE: VALVE ASSEMBLY 2" SERIES 9300RR MODEL C FULL BORE ASME CLASS 300 FLANGED BALL VALVE			APPV: KAS	DATE: 7/1/15
SIZE: D	DWG NO: 5572	REV: 0	SHEET 2 OF 2	

