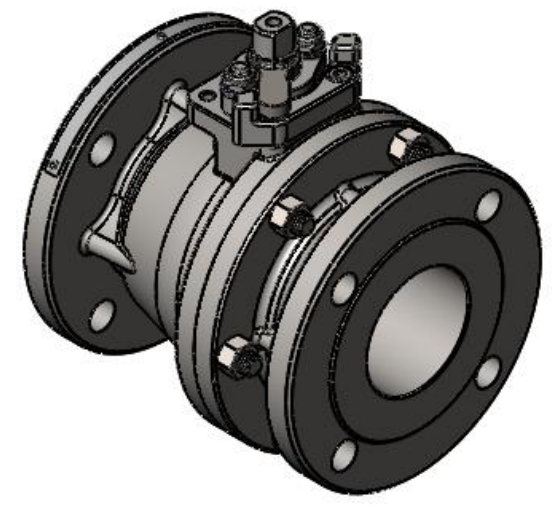
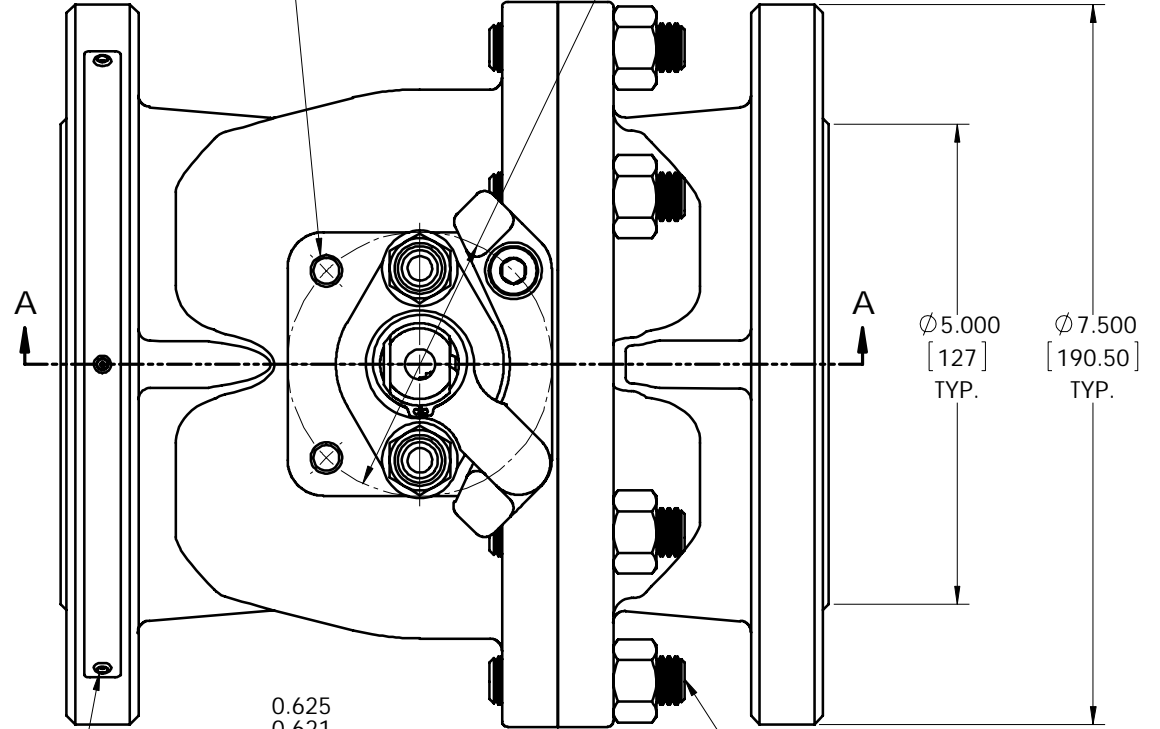


M8 x 1.25-6H 4 HOLES
(2) HOLES THRU
(2) HOLES 0.63 [16] DEEP

ISO 5211 FLANGE
TYPE F07

Ø 2.756 BOLT CIRCLE
[70]



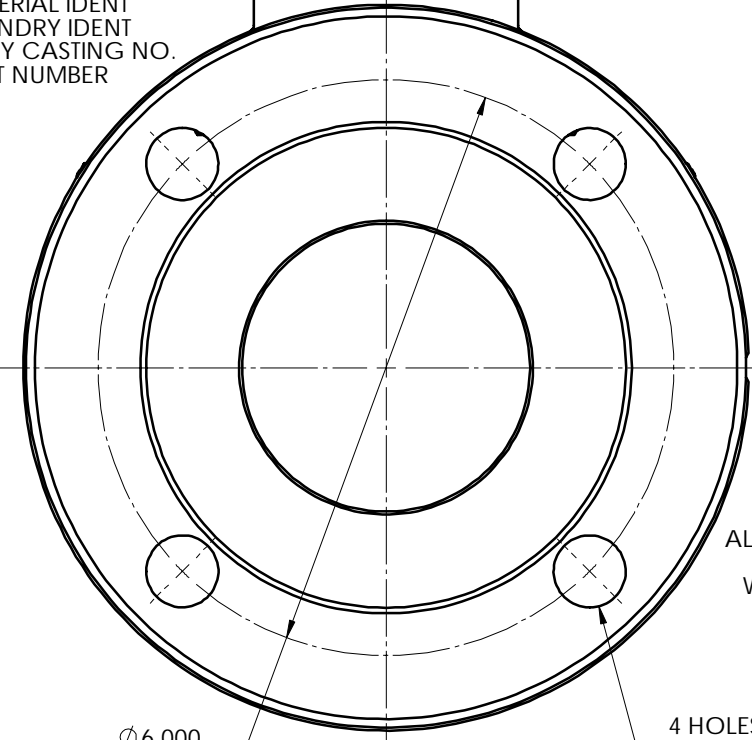
- NOTES:
1. ATTACH IDENTIFICATION TAG PER JMA-98.
 2. FOR INSTALLATION, MAINTENANCE & OPERATING INSTRUCTIONS SEE IMO-226.
 3. WHERE IDENTIFICATION APPEARS ON NUT OR STUD FACE, ASSEMBLE WITH IDENTIFICATION ALWAYS VISIBLE.
 4. STUD HEIGHT IS ONLY APPLICABLE WHEN USING CONTINUOUS THREADED STUDS. WHEN USING CONTINUOUS THREADED STUDS, USE LOCTITE #271 ON STUD THREADS INTO BODY PER JSA-34. DOUBLE ENDED STUDS DO NOT REQUIRE LOCTITE.
 5. DIMENSIONS IN [] ARE IN MILLIMETERS AND ARE BASED ON STANDARD DIMENSIONS SHOWN.

LUBRICATE STUD THREADS AND BOTTOM FACE OF NUT PER JSA-01 OR A COMPATIBLE LUBRICANT FOR THE GIVEN VALVE (SEE NOTE 3) TORQUE NUT TO 4 FT.-LBS.

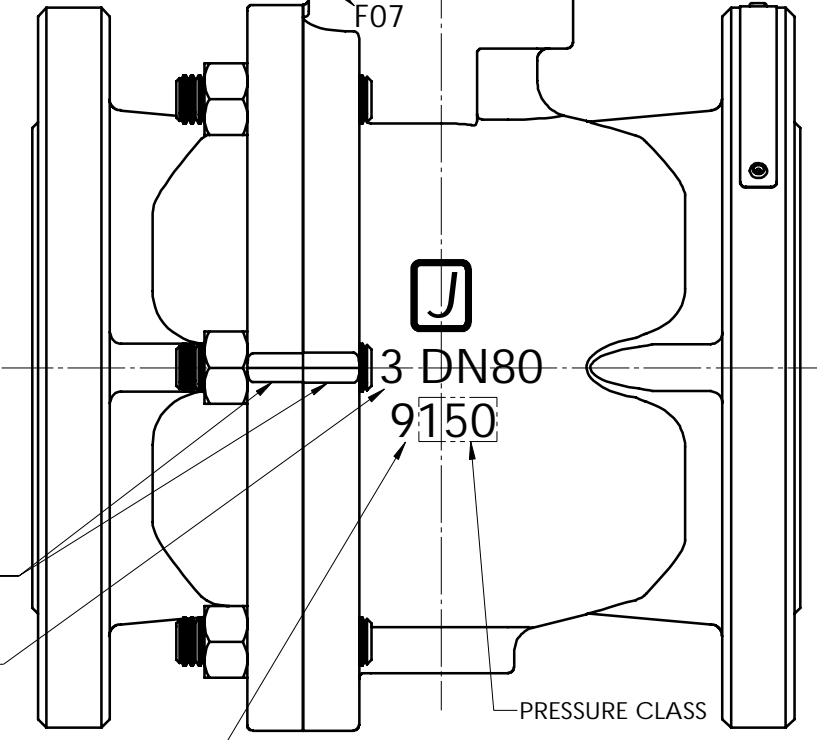
Ø 0.862
0.856
[21.89]
[21.74]

LUBRICATE STUD THREADS AND BOTTOM FACE OF NUT PER JSA-01 OR A COMPATIBLE LUBRICANT FOR THE GIVEN VALVE (SEE NOTE 3) TORQUE NUT PER TABLE ON SHEET 2

MATERIAL IDENT
FOUNDRY IDENT
BODY CASTING NO.
HEAT NUMBER



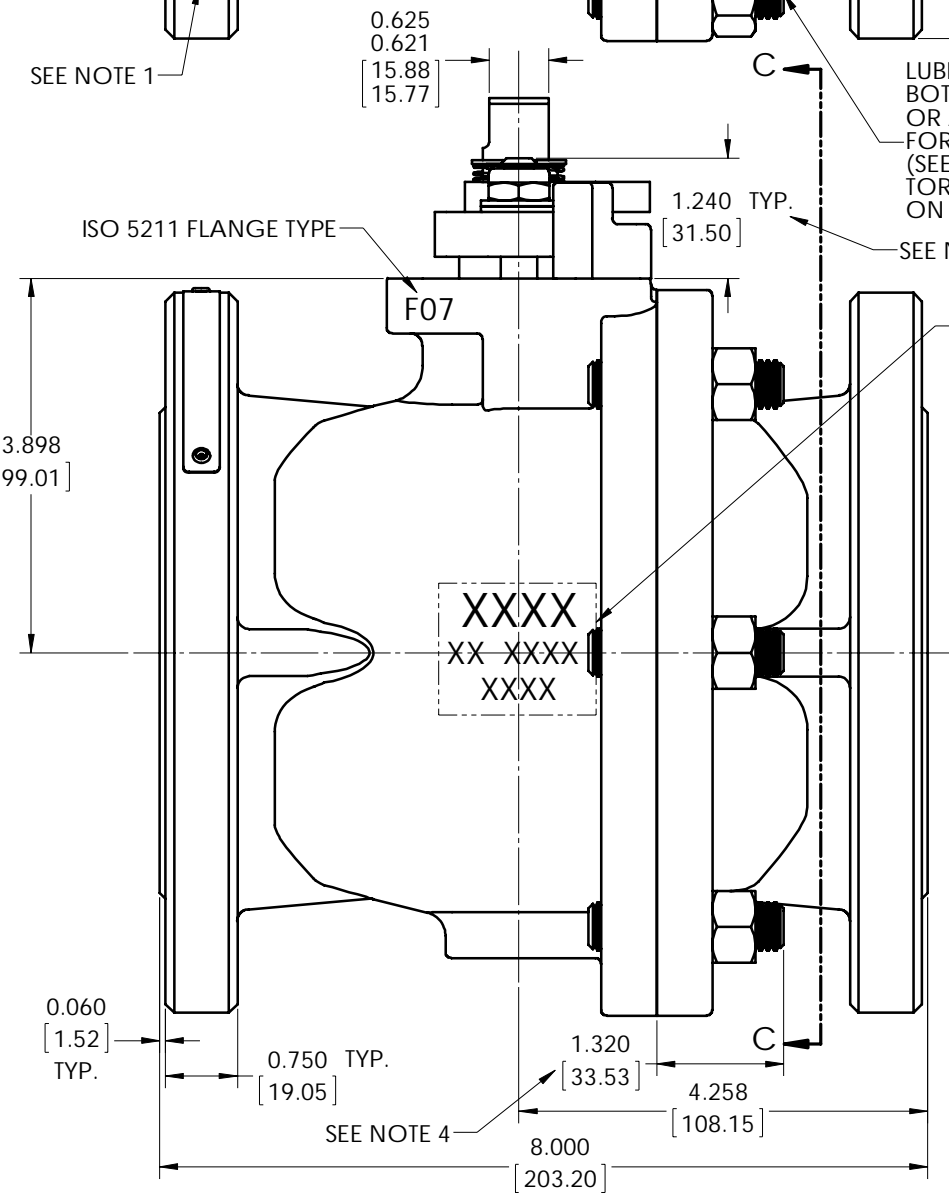
ISO 5211 FLANGE TYPE



ALIGN VEE NOTCH ON BODY CAP WITH VEE NOTCH ON BODY

VALVE SERIES

PRESSURE CLASS



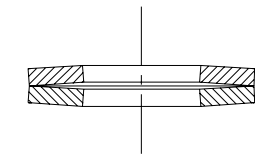
SEE NOTE 4

THIS DRAWING AND ALL INFORMATION CONTAINED HEREIN ARE THE PROPERTY OF METSO AND ARE NOT TO BE USED EXCEPT AS AUTHORIZED IN WRITING BY METSO

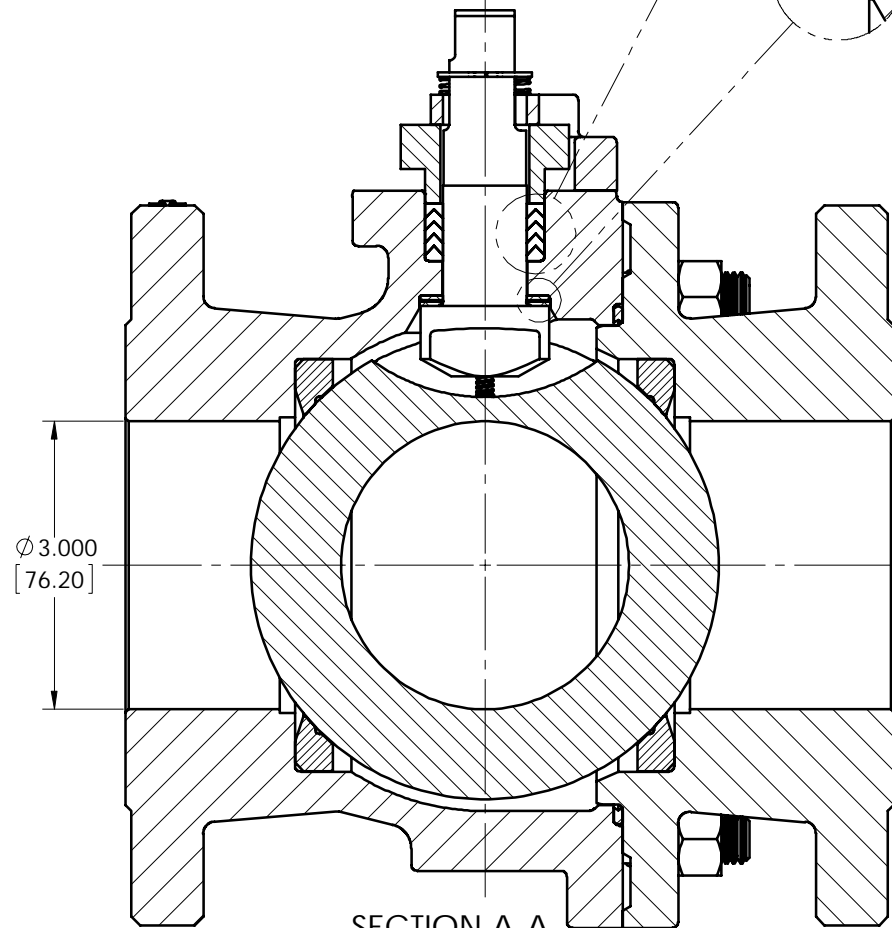
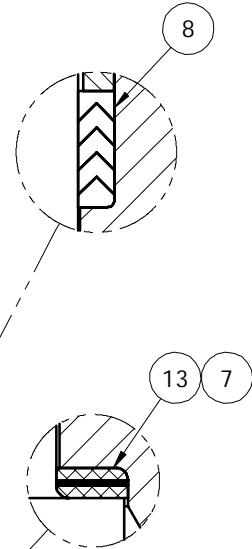
SPECIFICATIONS TO BE USED IN CONJUNCTION WITH THIS DRAWING		MAKE FROM PART NO.		INTERNAL	
JSA-01, JST-02	JSA-10, JSA-17	JSA-34	JMA-98	IMO-226	
TITLE: VALVE ASSEMBLY 3" SERIES 9150RR MODEL C FULL BORE ASME CLASS 150 FLANGED BALL VALVE				DRAWN	DATE
				PJD	6/22/15
				APPVD.	DATE
				KAS	7/1/15

ITEM NO.	DESCRIPTION	QTY.	SPARE PART
1	BODY	1	N/A
2	BODY CAP	1	N/A
3	BALL	1	B
4	STEM	1	B
5	SEAT	2	A
6	BODY SEAL	1	A
7	SECONDARY STEM SEAL	1	A
8	STEM SEAL	1	A
13	STEM BEARING	2	A
20	COMPRESSION PLATE	1	B
22	IDENTIFICATION TAG	1	N/A
23	POP RIVET	3	N/A
29	BONNET STUD	2	B
30	BONNET STUD NUT	2	B
31	DISC SPRING	4	B
32	BODY STUD	6	B
33	BODY STUD NUT	6	B
70	TOP GROUNDING SPRING	1	B
71	BOTTOM GROUNDING SPRING	1	B
72	RETAINING RING	1	B
79	TRAVEL STOP	1	B
80	INDICATOR STOP	1	B
81	SOCKET HEAD CAP SCREW	2	B

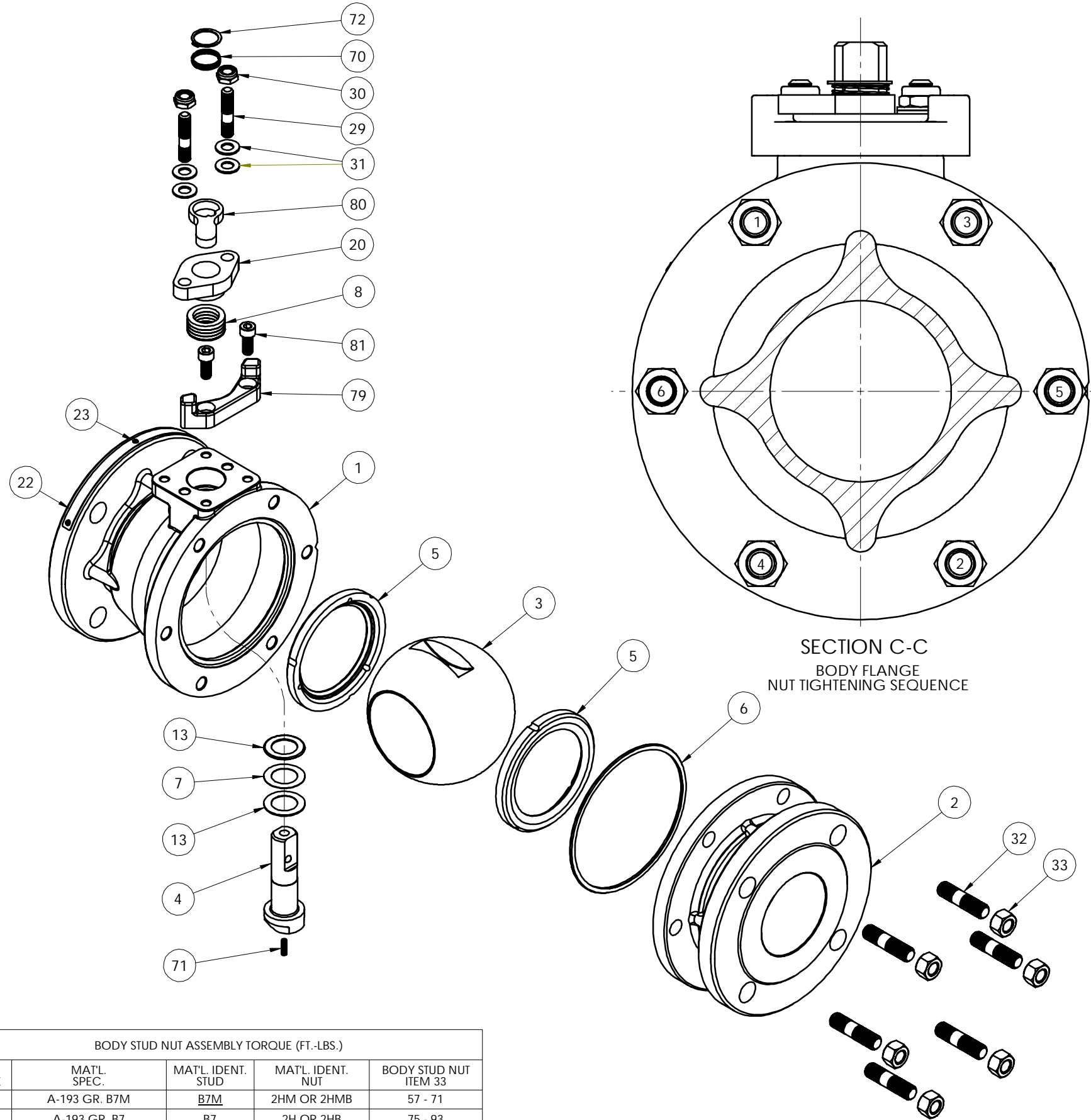
A= PART SUPPLIED IN SPARE PART SET
 B= PART MAY BE ORDERED AS REQUIRED FOR REPAIR
 N/A= NOT AVAILABLE AS A SPARE PART



PROPER DISC SPRING ARRANGEMENT (UNCOMPRESSED)



SECTION A-A



SECTION C-C
 BODY FLANGE
 NUT TIGHTENING SEQUENCE

BODY STUD NUT ASSEMBLY TORQUE (FT.-LBS.)				
MAT'L CODE	MAT'L SPEC.	MAT'L IDENT. STUD	MAT'L IDENT. NUT	BODY STUD NUT ITEM 33
19	A-193 GR. B7M	<u>B7M</u>	2HM OR 2HMB	57 - 71
20	A-193 GR. B7	B7	2H OR 2HB	75 - 93
31	A-193 GR. B8	<u>B8, B8C OR B8T</u>	<u>8B, 8CB OR 8TB</u>	57 - 70
35	B-473 CARPENTER 20Cb-3	A20	A20	22 - 27
71	QQ-N-286	K	K	58 - 71

THIS DRAWING AND ALL INFORMATION CONTAINED HEREIN ARE THE PROPERTY OF METSO AND ARE NOT TO BE USED EXCEPT AS AUTHORIZED IN WRITING BY METSO

TO BE USED IN CONJUNCTION WITH THIS DRAWING
 JSA-01,JST-02
 JSA-10,JSA-17
 JSA-34
 JMA-98
 IMO-226

MAKE FROM PART NO. **INTERNAL**

TITLE: VALVE ASSEMBLY
 3" SERIES 9150RR MODEL C
 FULL BORE ASME CLASS 150
 FLANGED BALL VALVE

DRAWN: PJD
 DATE: 6/22/15

APP'D: KAS
 DATE: 7/1/15

REV: 0

SIZE: D
 DWG NO: 5573

© 2015 Metso
 SHREWSBURY, MASSACHUSETTS