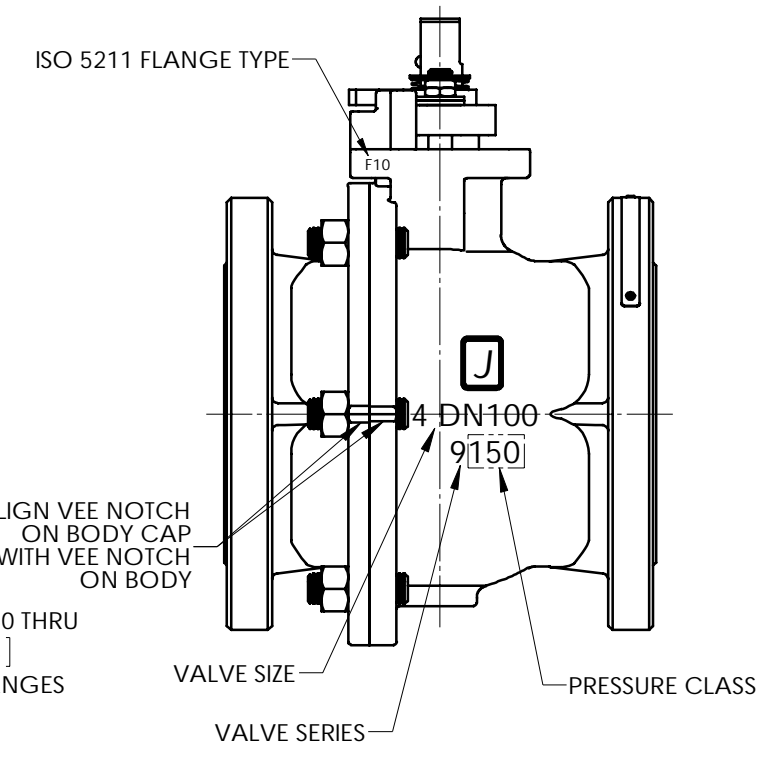
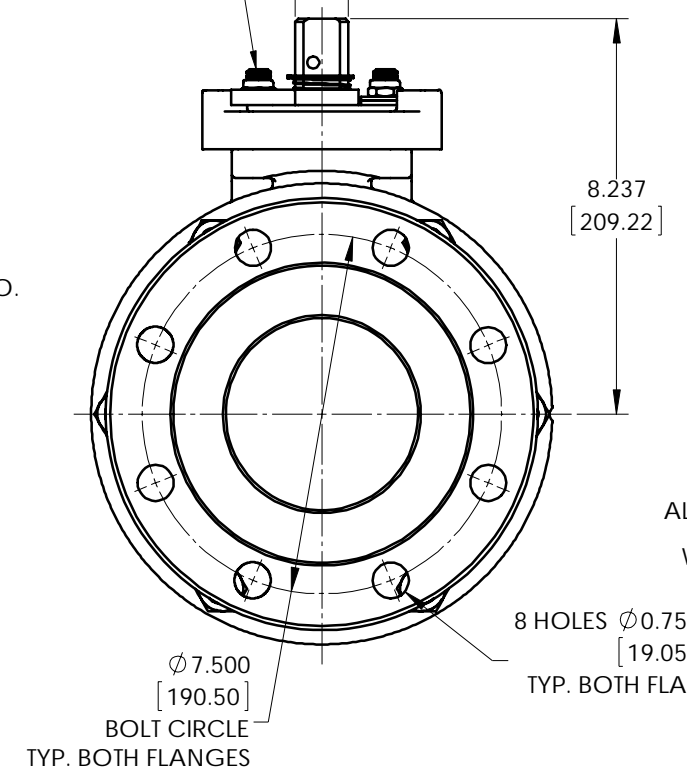
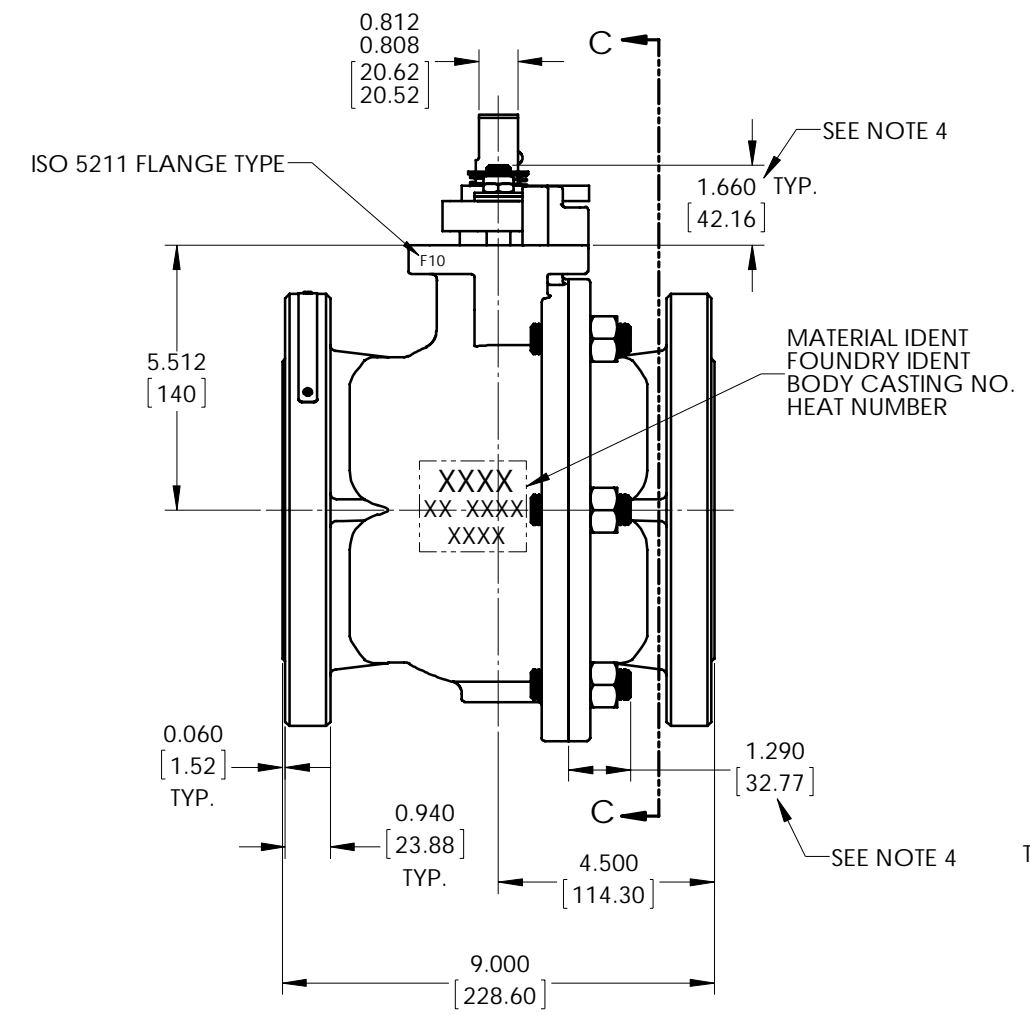
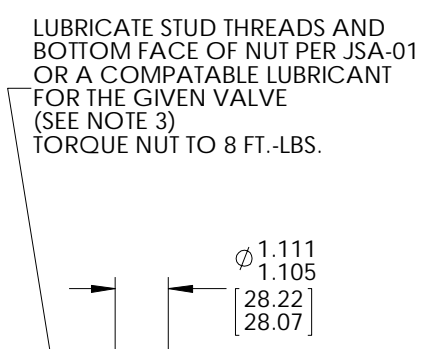
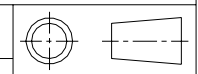


- NOTES:
1. ATTACH IDENTIFICATION TAG PER JMA-98.
 2. FOR INSTALLATION, MAINTENANCE & OPERATING INSTRUCTIONS SEE IMO-226.
 3. WHERE IDENTIFICATION APPEARS ON NUT OR STUD FACE, ASSEMBLY WITH IDENTIFICATION ALWAYS VISIBLE.
 4. STUD HEIGHT IS ONLY APPLICABLE WHEN USING CONTINUOUS THREADED STUDS. WHEN USING CONTINUOUS THREADED STUDS, USE LOCTITE #271 ON STUD THREADS INTO BODY PER JSA-34. DOUBLE ENDED STUDS DO NOT REQUIRE LOCTITE.
 5. DIMENSIONS IN [] ARE IN MILLIMETERS AND ARE BASED ON STANDARD DIMENSIONS SHOWN.



© 2015 Metso



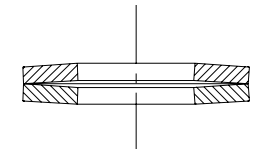
THIS DRAWING AND ALL INFORMATION CONTAINED HEREIN ARE THE PROPERTY OF METSO AND ARE NOT TO BE USED EXCEPT AS AUTHORIZED IN WRITING BY METSO

SPECIFICATIONS TO BE USED IN CONJUNCTION WITH THIS DRAWING		MAKE FROM PART NO.		INTERNAL	
JSA-01, JST-02	JSA-10, JSA-17	TITLE: VALVE ASSEMBLY		DRAWN	DATE
JSA-34	JMA-98	4" SERIES 9150RR MODEL C		PJD	6/22/18
IMO-226		FULL BORE ASME CLASS 150		APPVD.	DATE
		FLANGED BALL VALVE		KAS	7/1/15
SIZE	DWG NO.	REV			
D	5575	0			

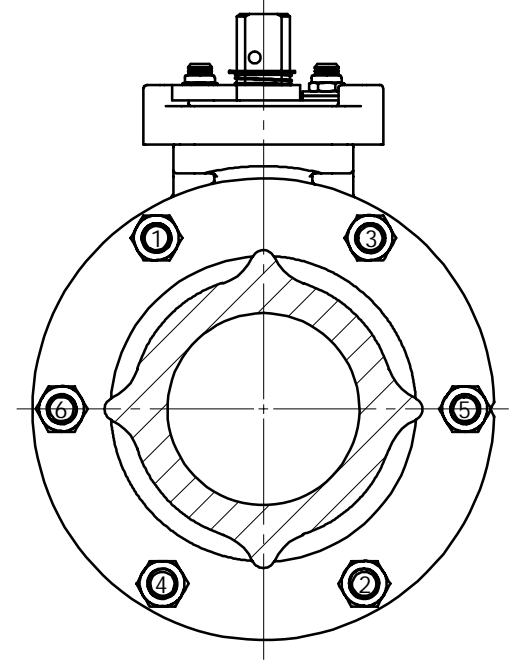
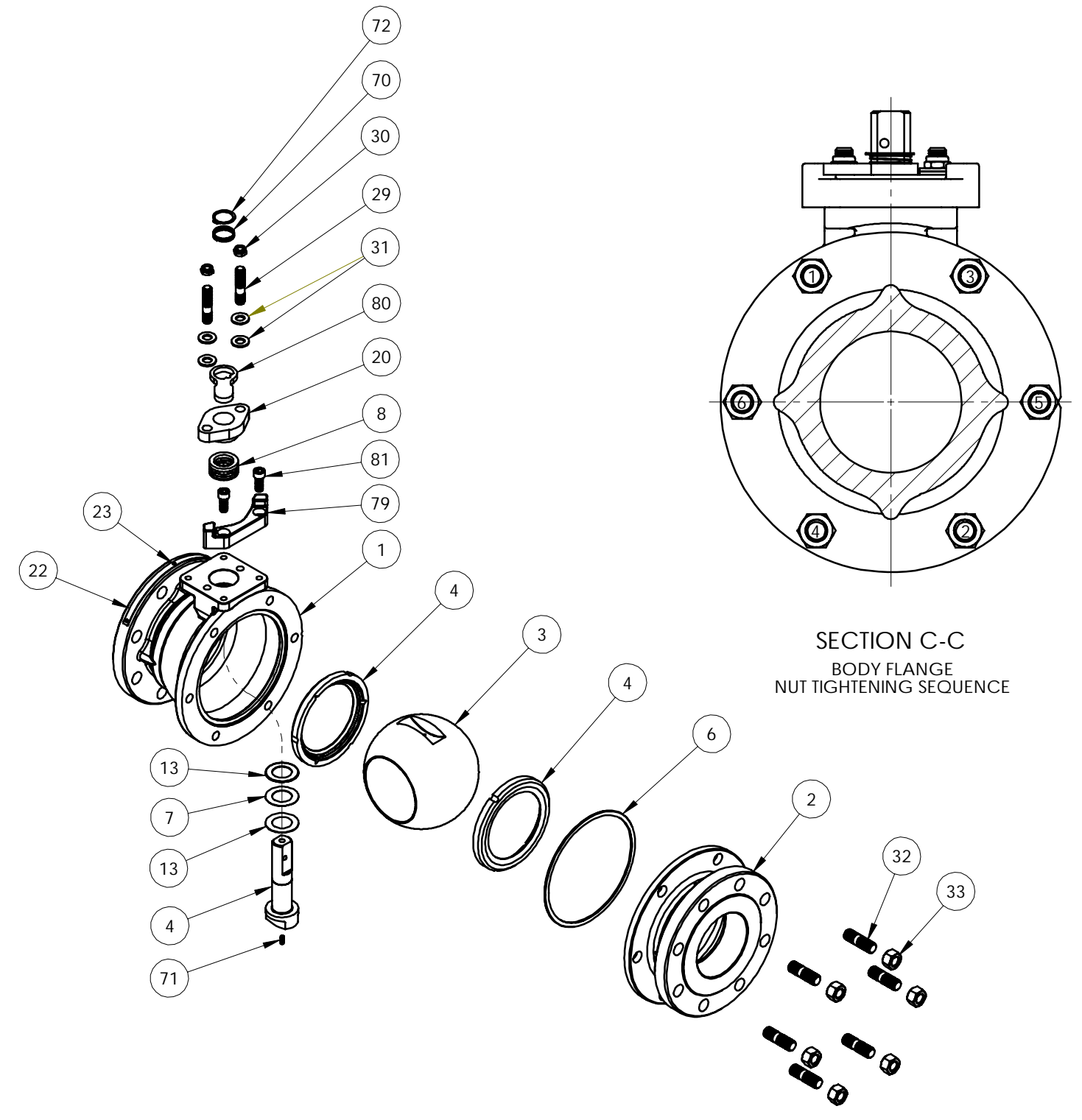
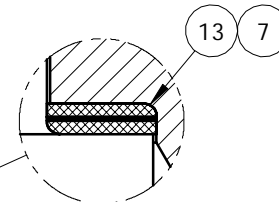
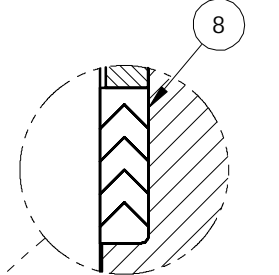
metso
SHREWSBURY, MASSACHUSETTS

ITEM NO.	DESCRIPTION	QTY.	SPARE PART
1	BODY	1	N/A
2	BODY CAP	1	N/A
3	BALL	1	B
4	SEAT	2	A
4	STEM	1	B
6	BODY SEAL	1	A
7	SECONDARY STEM SEAL	1	A
8	STEM SEAL	1	A
13	STEM BEARING	2	A
20	COMPRESSION PLATE	1	B
22	IDENTIFICATION TAG	1	N/A
23	POP RIVET	3	N/A
29	BONNET STUD	2	B
30	BONNET STUD NUT	2	B
31	DISC SPRING	4	B
32	BODY STUD	6	B
33	BODY STUD NUT	6	B
70	TOP GROUNDING SPRING	1	B
71	BOTTON GROUNDING SPRING	1	B
72	RETAINING RING	1	B
79	TRAVEL STOP	1	B
80	INDICATOR STOP	1	B
81	SOCKET HEAD CAP SCREW	2	B

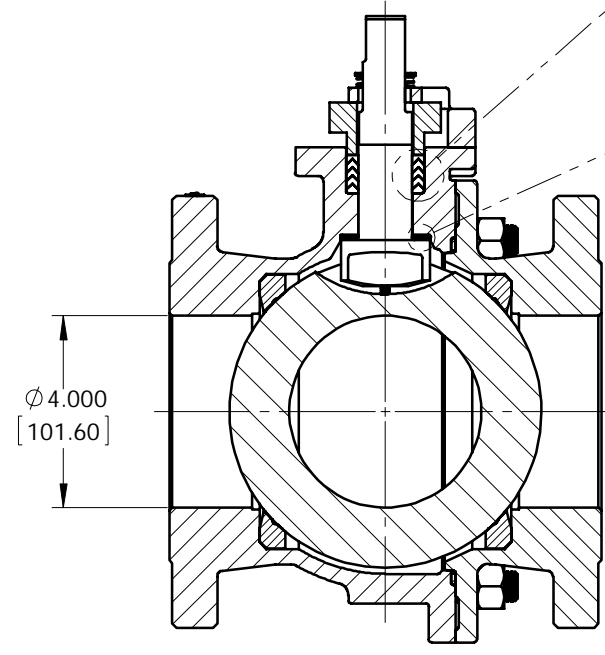
A= PART SUPPLIED IN SPARE PART SET
 B= PART MAY BE ORDERED AS REQUIRED FOR REPAIR
 N/A= NOT AVAILABLE AS A SPARE PART



PROPER DISC SPRING ARRANGEMENT (UNCOMPRESSED)



SECTION C-C
 BODY FLANGE
 NUT TIGHTENING SEQUENCE



SECTION A-A

BODY STUD NUT ASSEMBLY TORQUE (FT.-LBS.)				
MAT'L. CODE	MAT'L. SPEC.	MAT'L. IDENT. STUD	MAT'L. IDENT. NUT	BODY STUD NUT ITEM 33
19	A-193 GR. B7M	<u>B7M</u>	2HM OR 2HMB	110 - 140
20	A-193 GR. B7	B7	2H OR 2HB	150 - 190
31	A-193 GR. B8	<u>B8, B8C OR B8I</u>	<u>8B, 8CB OR 8IB</u>	110 - 140
35	B-473 CARPENTER 20Cb-3	A20	A20	45 - 55
71	QQ-N-286	K	K	115 - 141

THIS DRAWING AND ALL INFORMATION CONTAINED HEREIN ARE THE PROPERTY OF METSO AND ARE NOT TO BE USED EXCEPT AS AUTHORIZED IN WRITING BY METSO

SPECIFICATIONS TO BE USED IN CONJUNCTION WITH THIS DRAWING
 JSA-01, JST-02
 JSA-10, JSA-17
 JSA-34
 JMA-98
 IMO-226

MAKE FROM PART NO. **INTERNAL**

TITLE: VALVE ASSEMBLY
 4" SERIES 9150RR MODEL C
 FULL BORE ASME CLASS 150
 FLANGED BALL VALVE

DRAWN: PJD DATE: 6/22/18
 APPVD: KAS DATE: 7/1/15

metso
 SHREWSBURY, MASSACHUSETTS

SIZE: D DWG NO: 5575 REV: 0

© 2015 Metso

