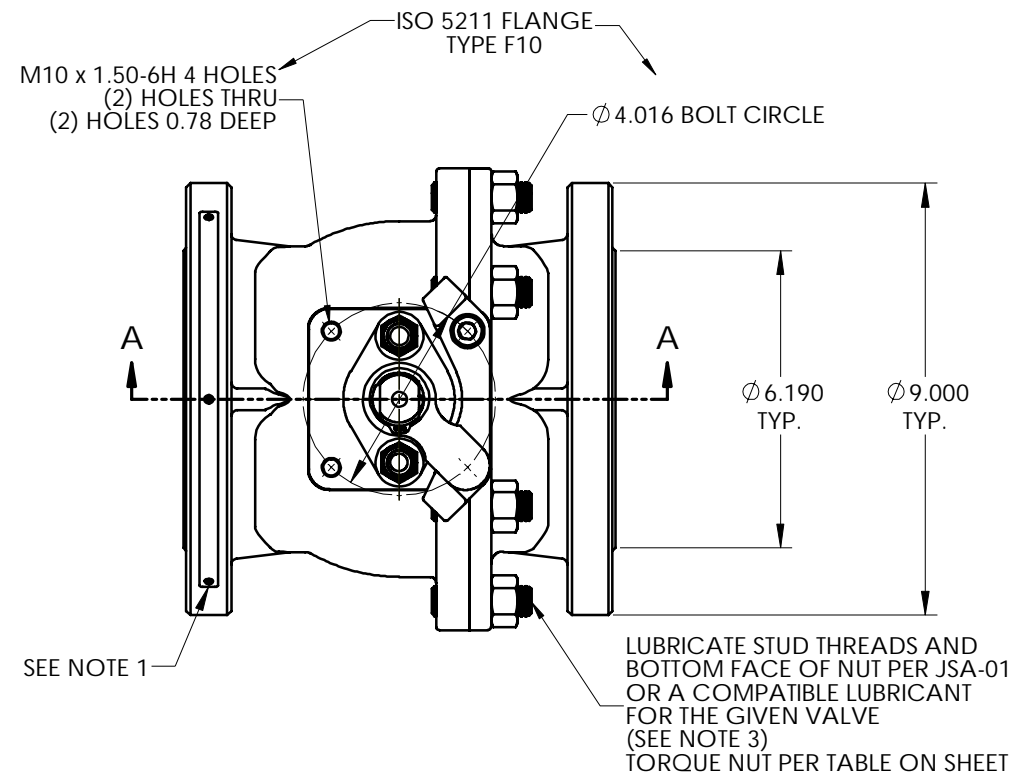
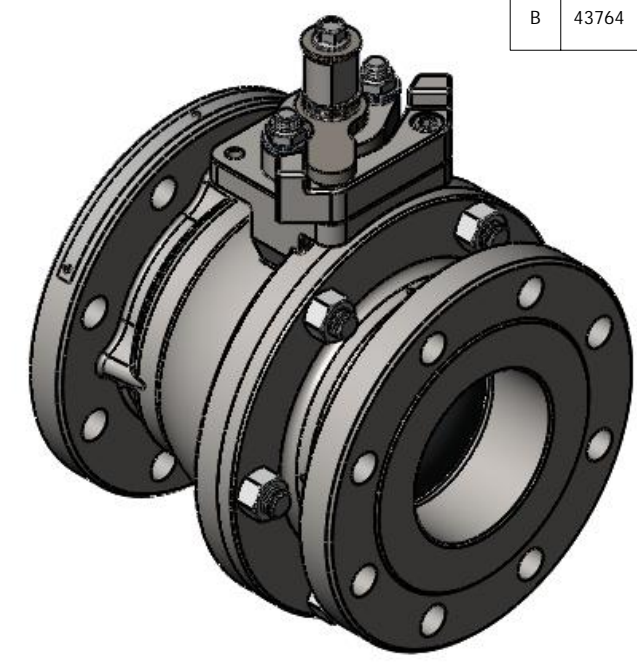


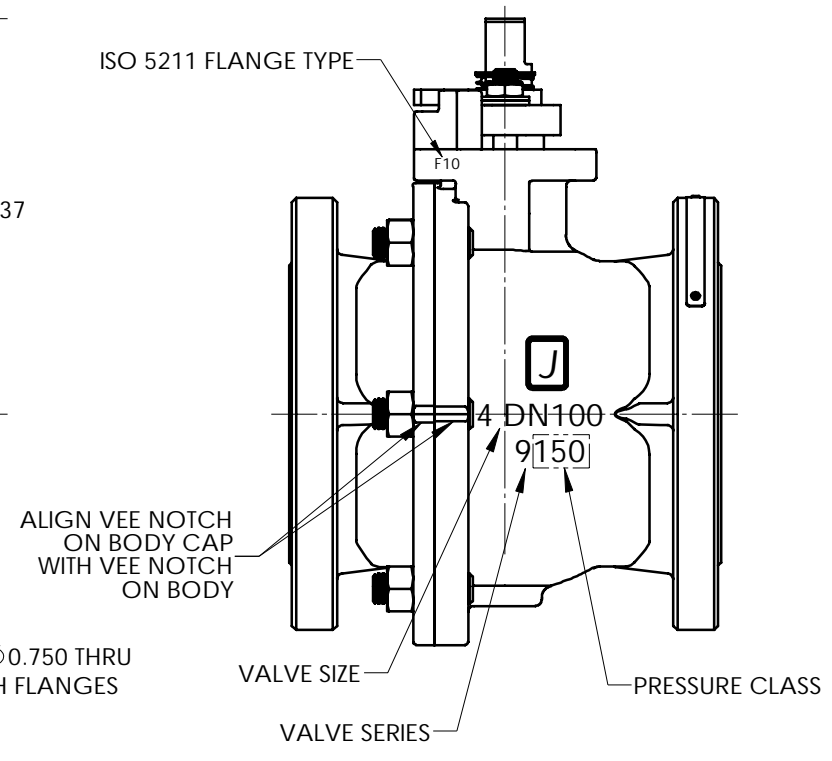
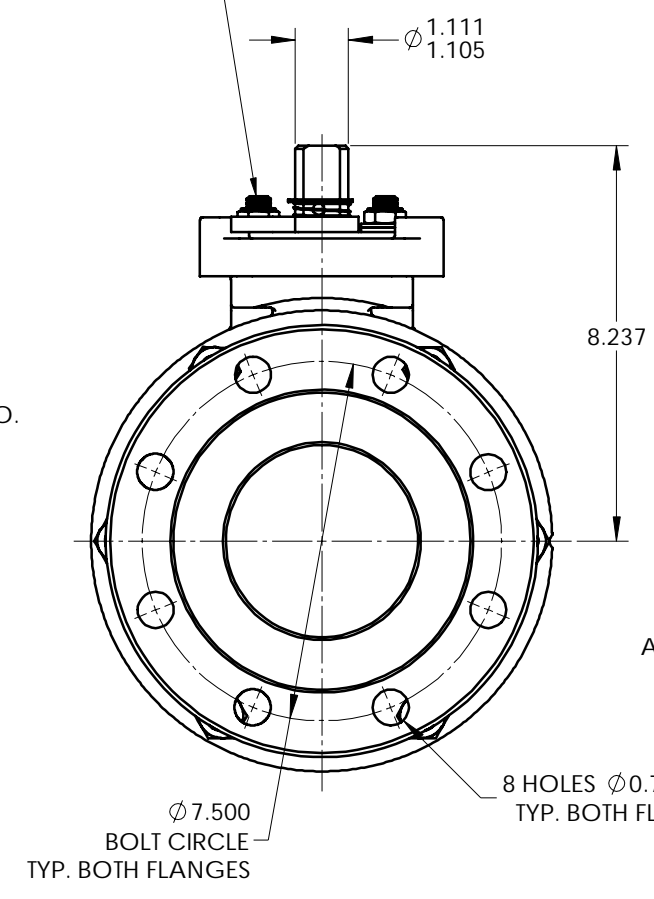
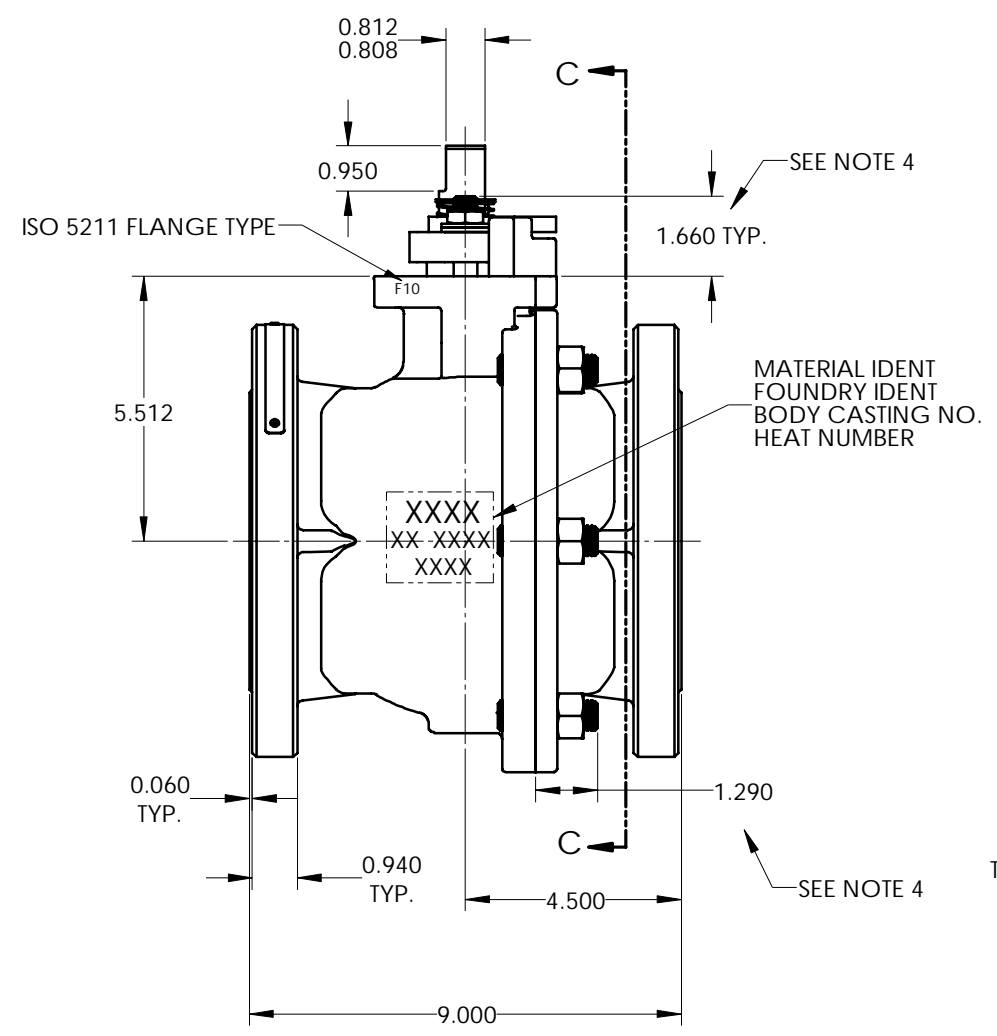
LET	ECN	REVISION	DRAWN	APPROVED	DATE
A	43653	REVISED NOTE 5 ADDED (ESNA) TO ITEM 30	PJD	KAS	4/13/16
B	43764	REMOVED METRIC DIMENSIONS REVISED NOTE 5 ADDED NOTE 6	PJD	KAS	6/10/16

NOTES:

1. ATTACH IDENTIFICATION TAG PER JMA-98.
2. FOR INSTALLATION, MAINTENANCE & OPERATING INSTRUCTIONS SEE IMO-R29.
3. WHERE IDENTIFICATION APPEARS ON NUT OR STUD FACE, ASSEMBLE WITH IDENTIFICATION ALWAYS VISIBLE.
4. STUD HEIGHT IS ONLY APPLICABLE WHEN USING CONTINUOUS THREADED STUDS. WHEN USING CONTINUOUS THREADED STUDS, USE LOCTITE #271 ON STUD THREADS INTO BODY PER JSA-34. DOUBLE ENDED STUDS DO NOT REQUIRE LOCTITE.
5. DIMENSIONS ARE IN INCHES. (A) (B)
6. SEE INSTRUCTIONAL DRAWING I-1774 FOR HANDLE OPTIONS AND DIMENSIONS. (B)



LUBRICATE STUD THREADS AND BOTTOM FACE OF NUT PER JSA-01 OR A COMPATIBLE LUBRICANT FOR THE GIVEN VALVE (SEE NOTE 3) TORQUE NUT TO 8 FT.-LBS.



© 2016 Metso

THIS DRAWING AND ALL INFORMATION CONTAINED HEREIN ARE THE PROPERTY OF METSO AND ARE NOT TO BE USED EXCEPT AS AUTHORIZED IN WRITING BY METSO

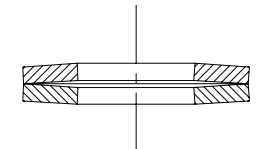
SPECIFICATIONS TO BE USED IN CONJUNCTION WITH THIS DRAWING		MAKE FROM PART NO.	RESTRICTED	
JSA-01, JST-02	JSA-10, JSA-17	TITLE: VALVE ASSEMBLY	DRAWN	DATE
JSA-34	JMA-98	4" SERIES 9150RR MODEL C FULL BORE ASME CLASS 150 FLANGED BALL VALVE	PJD	6/22/18
IMO-R29			APPVD.	DATE
			KAS	7/1/15



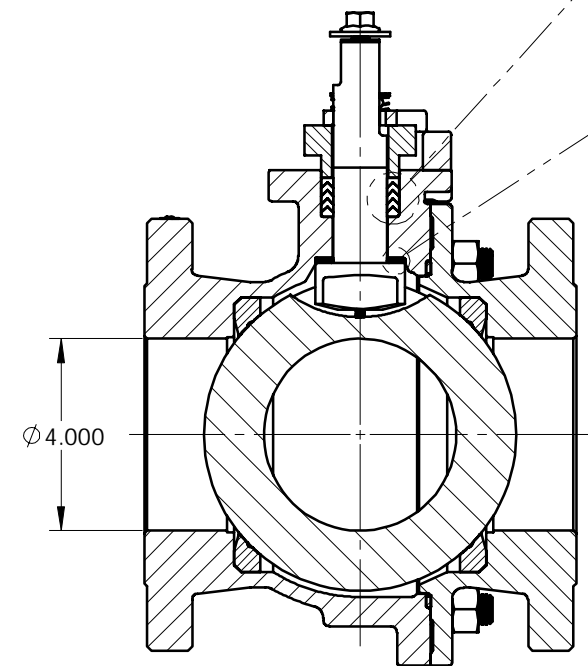
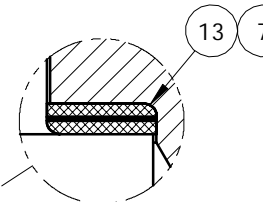
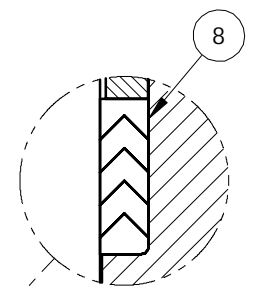
SIZE	DWG NO	REV
D	5575	B

ITEM NO.	DESCRIPTION	Default/QT.	SPARE PART
1	BODY	1	N/A
2	BODY CAP	1	N/A
3	BALL	1	B
4	STEM	1	B
5	SEAT	2	A
6	BODY SEAL	1	A
7	SECONDARY STEM SEAL	1	A
8	STEM SEAL	1	A
13	STEM BEARING	2	A
16	HEX. HEAD CAP SCREW	1	B
17	HANDLE (SEE NOTE 6)	1	B
19	FLAT WASHER	1	B
20	COMPRESSION PLATE	1	B
22	IDENTIFICATION TAG	1	N/A
23	POP RIVET	3	N/A
29	BONNET STUD	2	B
30	BONNET STUD NUT (ESNA) (A)	2	B
31	DISC SPRING	4	B
32	BODY STUD	6	B
33	BODY STUD NUT	2	B
70	TOP GROUNDING SPRING	1	B
71	BOTTOM GROUNDING SPRING	1	B
72	RETAINING RING	6	B
79	TRAVEL STOP	1	B
80	INDICATOR STOP	1	B
81	SOCKET HEAD CAP SCREW	2	B

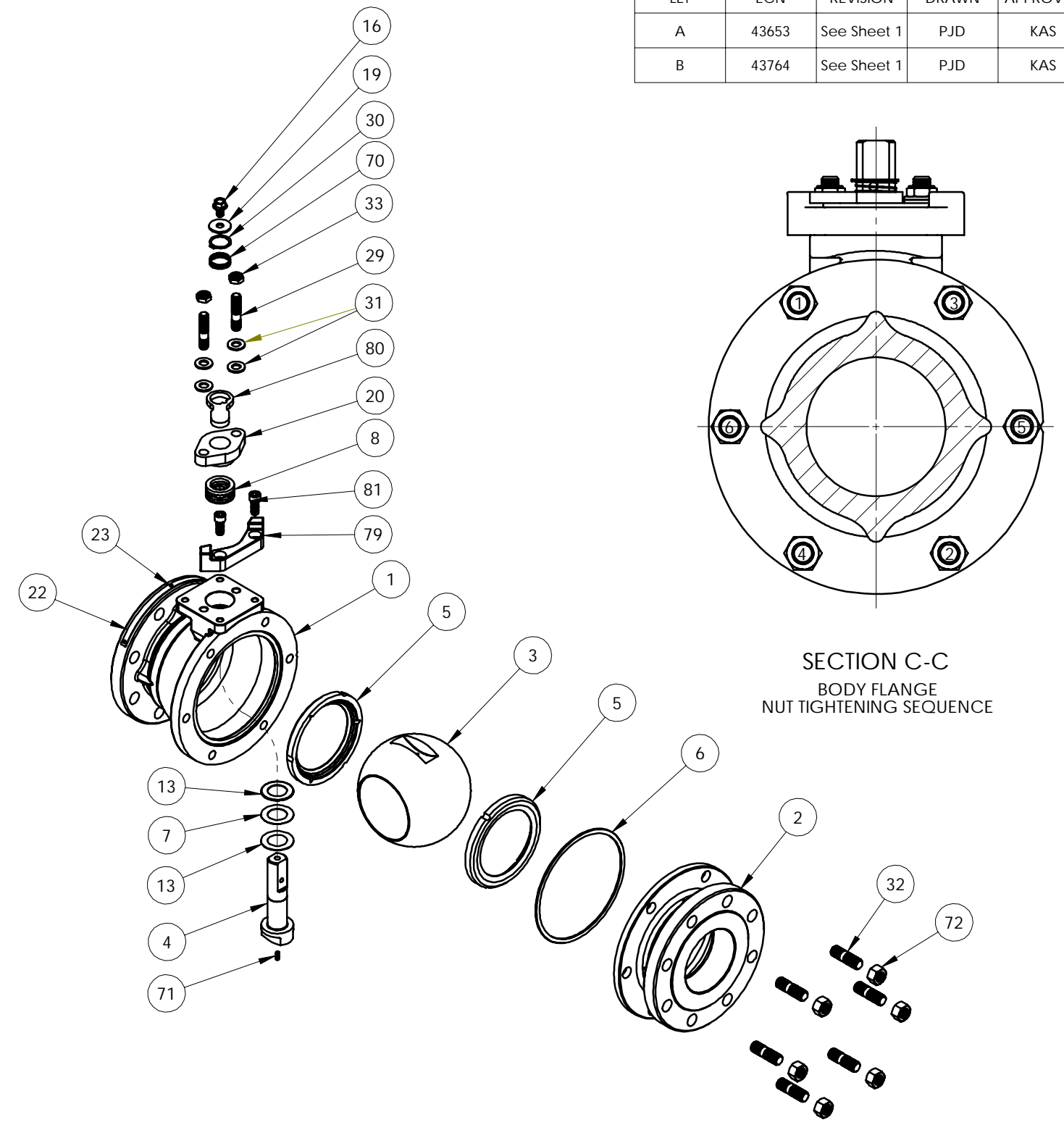
A= PART SUPPLIED IN SPARE PART SET
 B= PART MAY BE ORDERED AS REQUIRED FOR REPAIR
 N/A= NOT AVAILABLE AS A SPARE PART



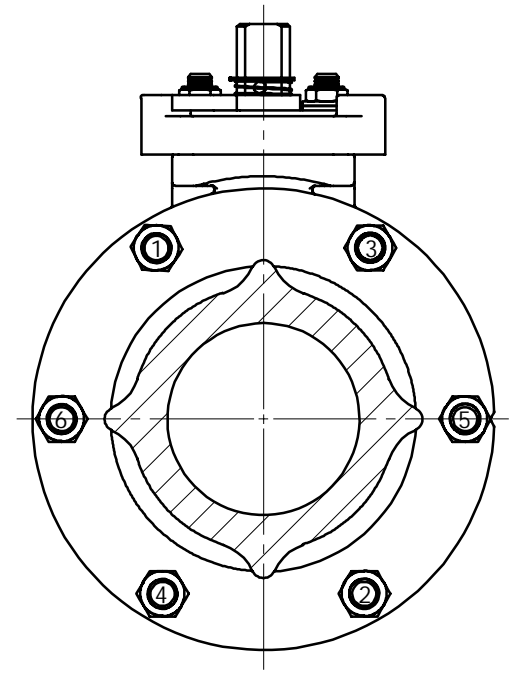
PROPER DISC SPRING ARRANGEMENT (UNCOMPRESSED)



SECTION A-A



LET	ECN	REVISION	DRAWN	APPROVED	DATE
A	43653	See Sheet 1	PJD	KAS	4/13/16
B	43764	See Sheet 1	PJD	KAS	6/10/16



SECTION C-C
 BODY FLANGE
 NUT TIGHTENING SEQUENCE

BODY STUD NUT ASSEMBLY TORQUE (FT.-LBS.)				
MAT'L. CODE	MAT'L. SPEC.	MAT'L. IDENT. STUD	MAT'L. IDENT. NUT	BODY STUD NUT ITEM 33
19	A-193 GR. B7M	<u>B7M</u>	2HM OR 2HMB	110 - 140
20	A-193 GR. B7	<u>B7</u>	2H OR 2HB	150 - 190
31	A-193 GR. B8	<u>B8, B8C OR B8I</u>	<u>8B, 8CB OR 8IB</u>	110 - 140
35	B-473 CARPENTER 20Cb-3	<u>A20</u>	<u>A20</u>	45 - 55
71	QQ-N-286	<u>K</u>	<u>K</u>	115 - 141

THIS DRAWING AND ALL INFORMATION CONTAINED HEREIN ARE THE PROPERTY OF METSO AND ARE NOT TO BE USED EXCEPT AS AUTHORIZED IN WRITING BY METSO

SPECIFICATIONS TO BE USED IN CONJUNCTION WITH THIS DRAWING
 JSA-01, JST-02
 JSA-10, JSA-17
 JSA-34
 JMA-98
 IMO-R29

MAKE FROM PART NO.

RESTRICTED

TITLE: VALVE ASSEMBLY
 4" SERIES 9150RR MODEL C
 FULL BORE ASME CLASS 150
 FLANGED BALL VALVE

DRAWN: PJD
 DATE: 6/22/18

APPVD: KAS
 DATE: 7/1/15

REV: B

SIZE: D
 DWG NO: 5575

metso
 SHREWSBURY, MASSACHUSETTS