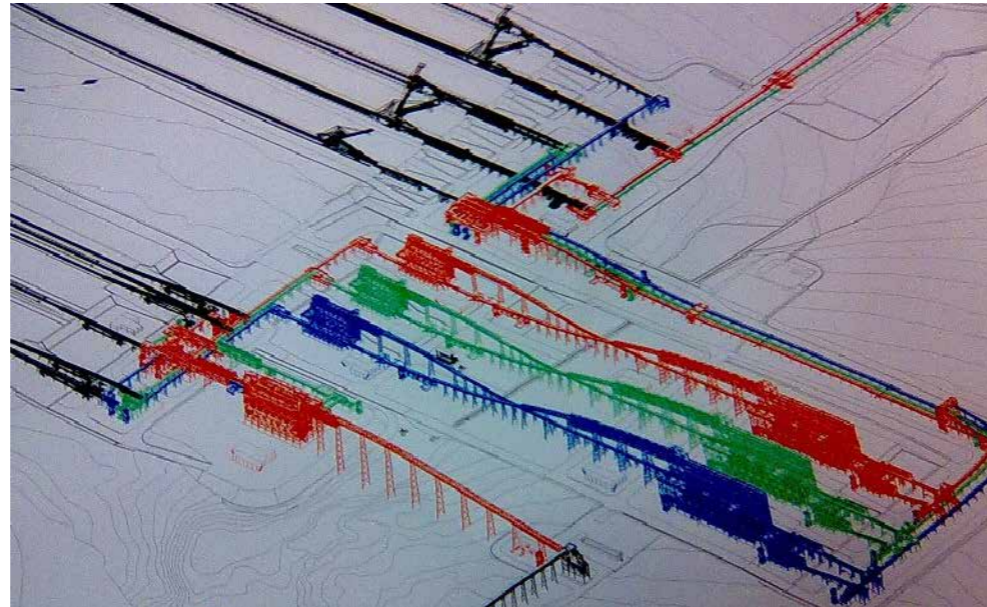


# Conveying Systems

Iron ore  
Brazil

Customer: Vale  
Project type: Existing plant  
Plant: Carajás, Serra Sul (S11D)  
Ore: Iron ore  
Scoop of  
**supply:**  
36 conveyors  
Total length: 2289 m  
Width: 2200  
30 conveyors  
Total length: 6304 m  
Width: 1600  
9 conveyors  
Total length: 1695 m  
Width: 1200  
Capacity: 2200 wide,  
1079 - 20.000 tph  
1600 wide  
4.000 - 8.000 tph  
1200 wide,  
2.058 tph  
Total weight: 12 000 tons  
Year: On going



- Construction Phase I
- Construction Phase II
- Construction Phase III
- Out of scope



[www.metso.com](http://www.metso.com)

E-mail: [minerals.info@metso.com](mailto:minerals.info@metso.com)

